

DDL CONFIGURATION SETTINGS



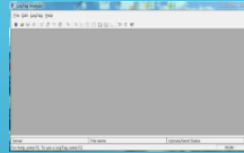
Control Solutions

Vaccine Temperature Monitoring
Cloud (VTMC)



Insert DDL in Docking Station

1. Open the Control Solutions VTMC 2.9 Build 11 program by double clicking on the icon on the desktop to open grey screen:



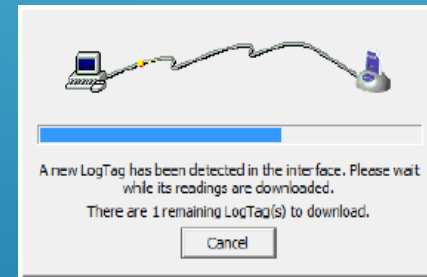
2. Connect the USB Interface cradle to the computer:
(If it is not already connected)



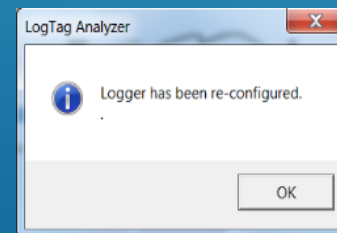
3. Insert recorder into cradle:

Data is automatically downloaded and saved.

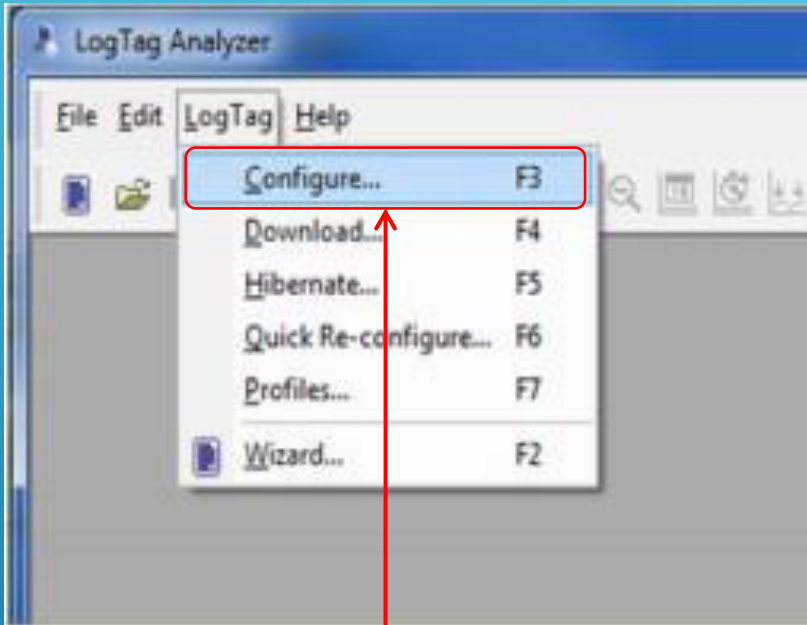
You will see this animation:



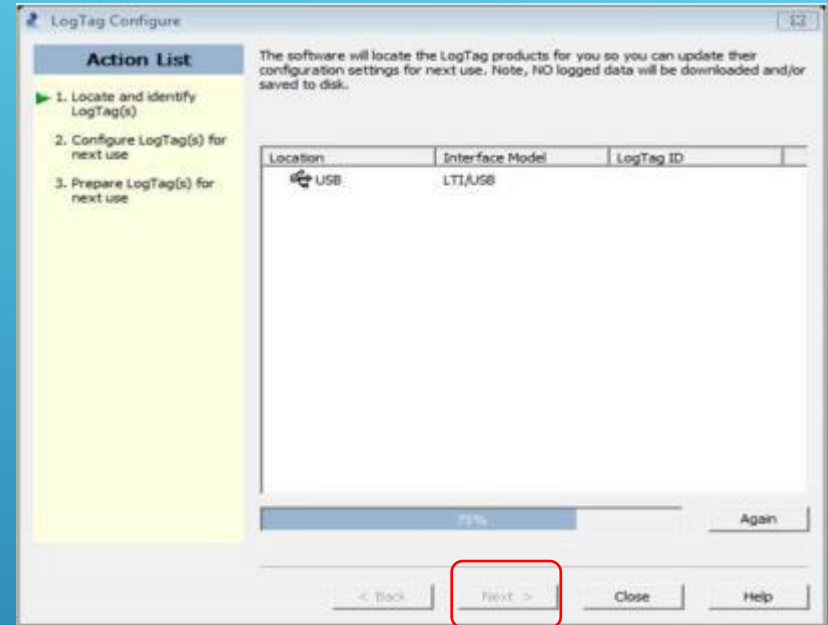
4. Click OK when you are notified that the recorder has been reconfigured:



Device Configuration (cont'd)

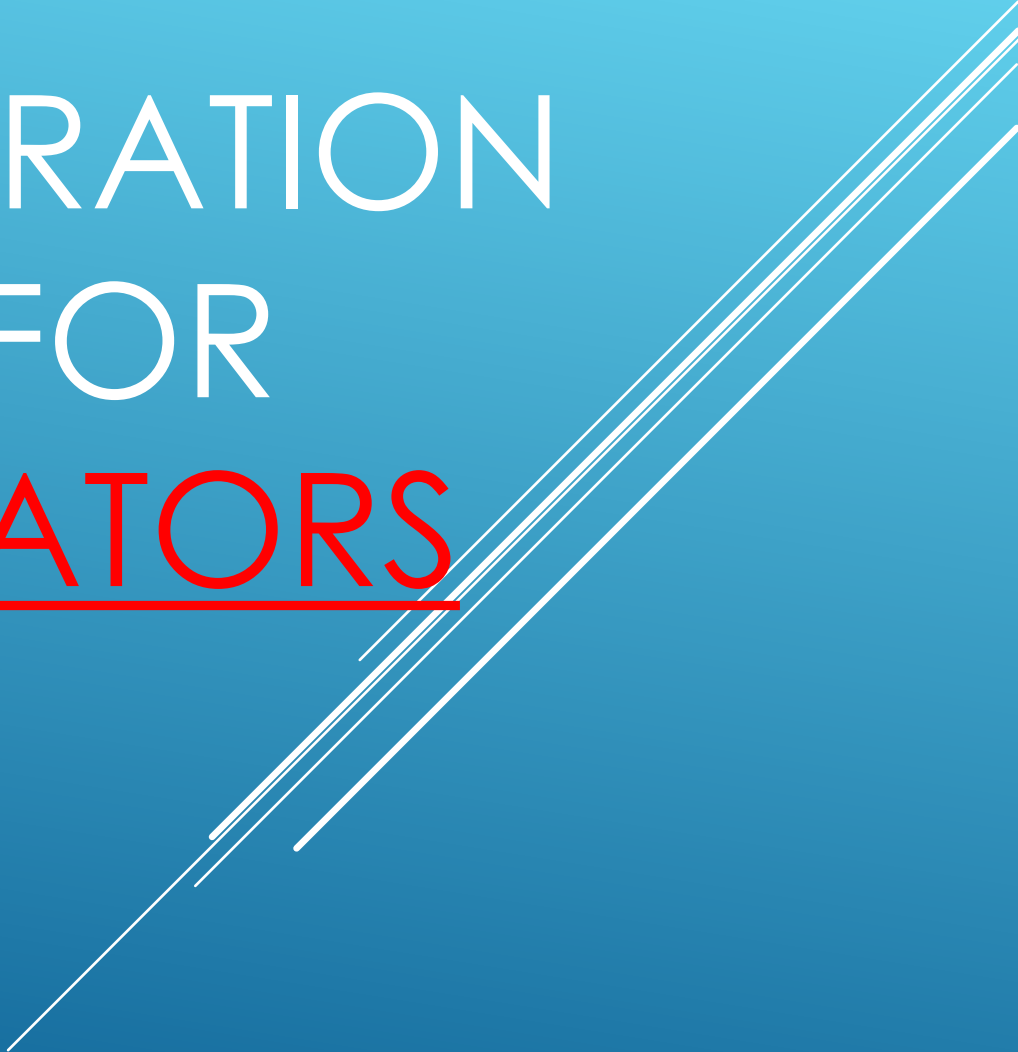


1. Select "LogTag" and "Configure"



2. Wait while the computer program locates the LogTag. If this window does not automatically close on its own, select "Next" once the software has searched for the LogTag Device

DDL
CONFIGURATION
SETTINGS FOR
REFRIGERATORS

A series of several parallel white lines of varying lengths and positions, all slanted diagonally from the bottom-left towards the top-right, located in the lower right quadrant of the slide.

LogTag Configure: Refrigerator Logger

3. Enter your VFC PIN #, clinic name, and Refrigerator in the "User ID" field. (If you have more than one refrigerator, label them 1 and 2 or A and B)

4a. Enter 15 minutes in the "Record a reading every" field. "Readings recorded" will automatically change to span at least 80 days.

4b. Make sure 0 minutes is in the space after "Begin recording after delay of"

User ID: C01313 Sunny Day Clinic Fridge

Push button start

LogTag battery: OK

Enable pre-start logging

Record readings continuously, overwrite oldest when memory full

Record readings so that:

Readings recorded will span at least 80 days

Number of readings to record 7,680 maximum is 7777

Record a reading every 15 Minutes

Begin recording after a delay of 0 Minutes

Trigger alarm when readings above/equal 46 violation readings (1 Hour)

After 4 Consecutive

Trigger alarm when readings below/equal 36 violation readings (None)

After 2 Accumulative

Configure requires a password

Download requires a password

Advanced Options

< Back Next > Close Help

"Readings recorded" will automatically change to span at least 80 days.
****Note: This number will be 165 for the VFC 400 DDLs (red DDLs).**

LogTag Configure: Refrigerator Logger

Action List

- ✓ 1. Locate and identify LogTag(s)

User ID: C01313 Sunny Day Clinic Fridge

Push button start LogTag battery: OK

Enable pre-start logging

Record readings continuously, overwrite oldest when memory full

Record readings so that:

Readings recorded will span at least 80 days

Number of readings to record 7,680 maximum is 7777

Record a reading every 15 Minutes

Begin recording after a delay of 0 Minutes

Trigger alarm when readings above/equal 46 °F

After 4 Consecutive violation readings (1 Hour)

Trigger alarm when readings below/equal 36 °F

After 2 Accumulative violation readings (None)

Configure requires a password

Download requires a password

Advanced Options

< Back Next > Close Help

5. Check "Trigger alarm when readings above/equal" and enter 46 if you record in Fahrenheit or 8 if you record in Celsius.

6. Check "After" and enter "4 consecutive"

7. Check "Trigger alarm when readings below/equal" and enter 36 if you record in Fahrenheit or 2 if you record in Celsius. Leave the "after" box unchecked.

LogTag Configure: Refrigerator Logger

LogTag Configure

Action List

- ✓ 1. Locate and identify LogTag(s)
- ▶ 2. Configure LogTag(s) for next use
3. Prepare LogTag(s) for next use

User ID: C01313 Sunny Day Clinic Fridge

Push button start LogTag battery: OK

Enable pre-start logging

Record readings continuously, overwrite oldest when memory full

Record readings so that:

Readings recorded will span at least days

Number of readings to record maximum is 7777

Record a reading every Minutes

Begin recording after a delay of Minutes

Trigger alarm when readings above/equal °F

After Consecutive violation readings (1 Hour)

Trigger alarm when readings below/equal °F

After Accumulative violation readings (No)

Configure requires a password

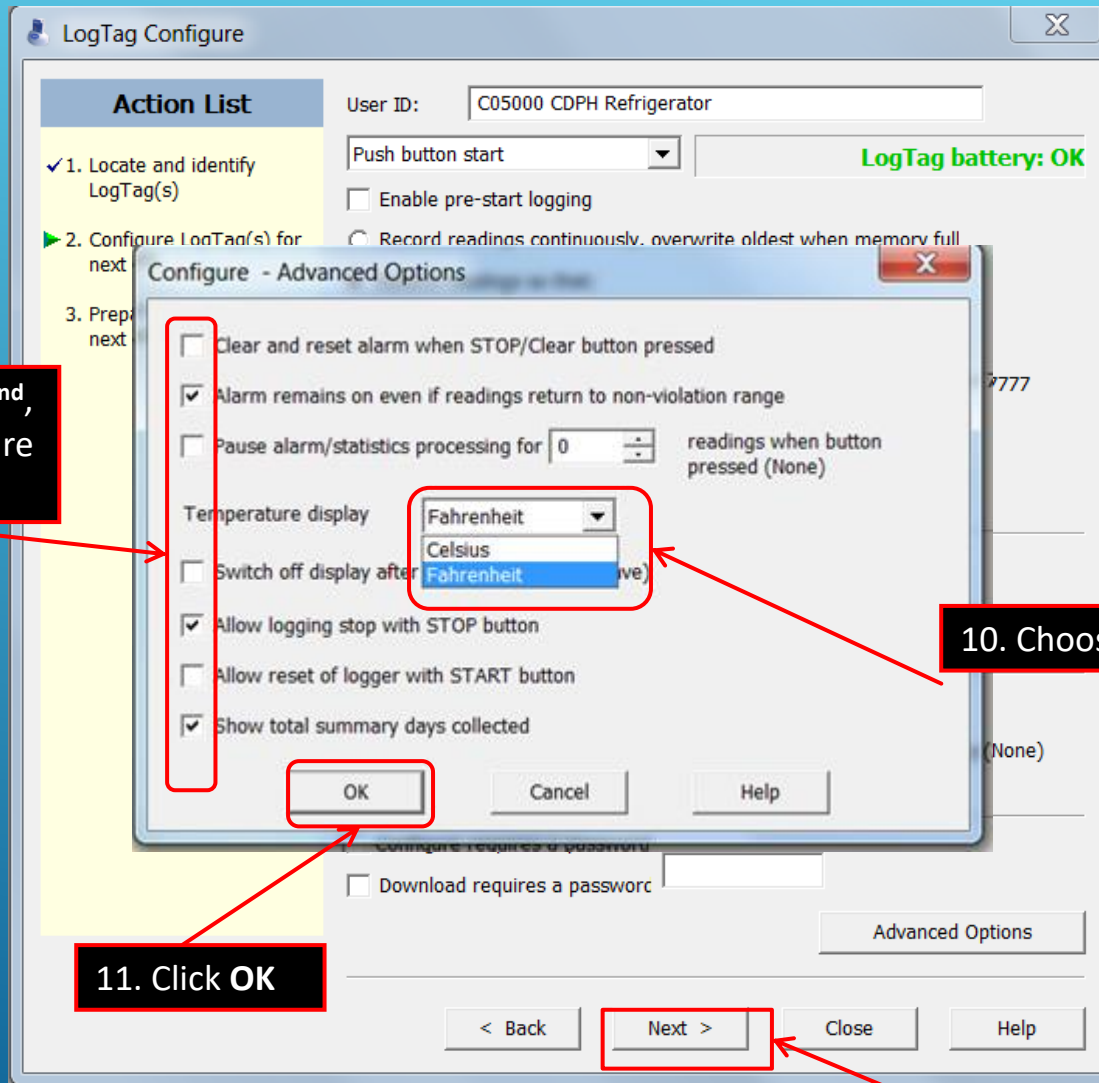
Download requires a password

Advanced Options

< Back Next > Close Help

8. Click
"Advanced Options"

LogTag Configure: Refrigerator Logger



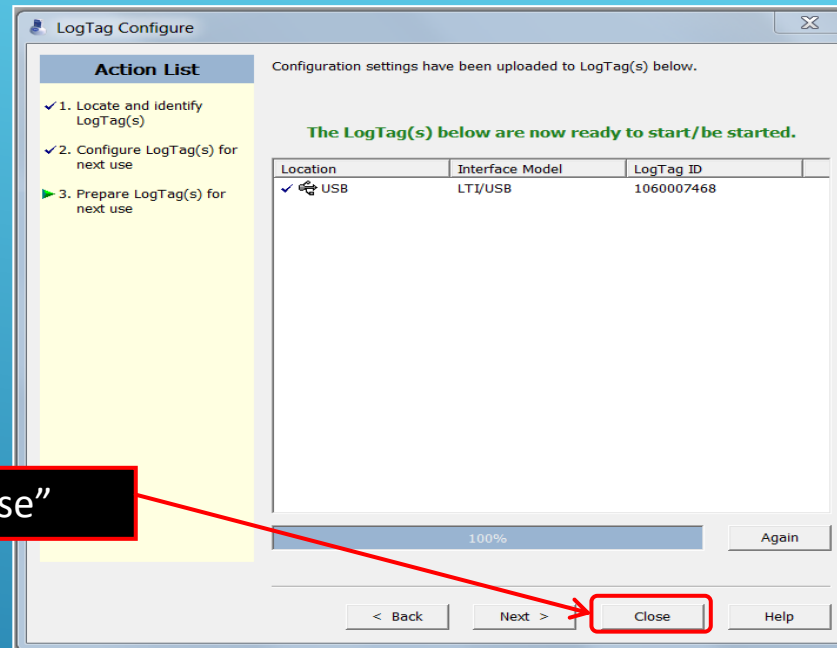
9. Make sure the 2nd, 5th, and 7th boxes are checked.

10. Choose Fahrenheit or Celsius

11. Click OK

12. Click Next

LogTag Configure: Refrigerator Logger



13. Click "Close"

Congratulations!

You are done configuring your refrigerator logger. **Important: Label your loggers!** Take the configured refrigerator logger out of the cradle and label the back of the logger "Refrigerator." If you have more than one refrigerator unit, also include the unit number.

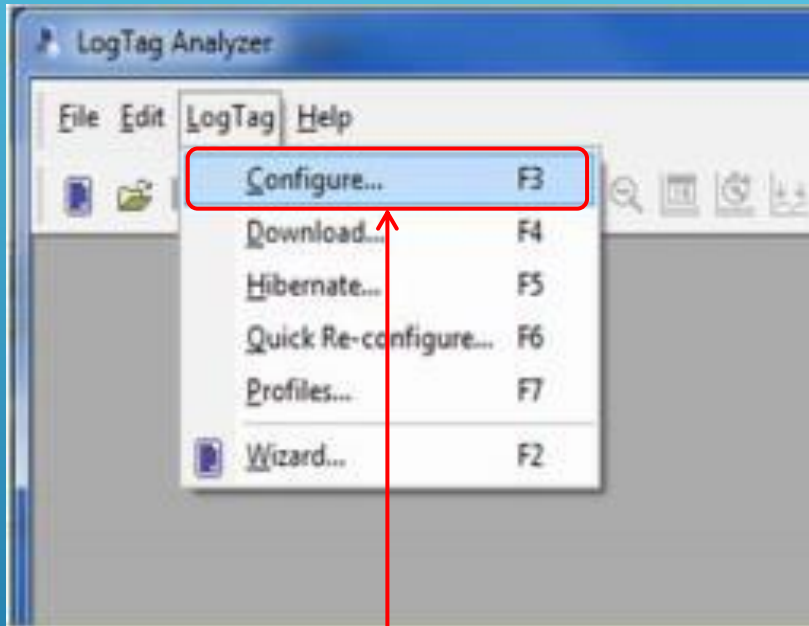
Insert the DDL that you will use in your freezer into the docking station if it needs to be configured.

DDL
CONFIGURATION
SETTINGS FOR
FREEZERS

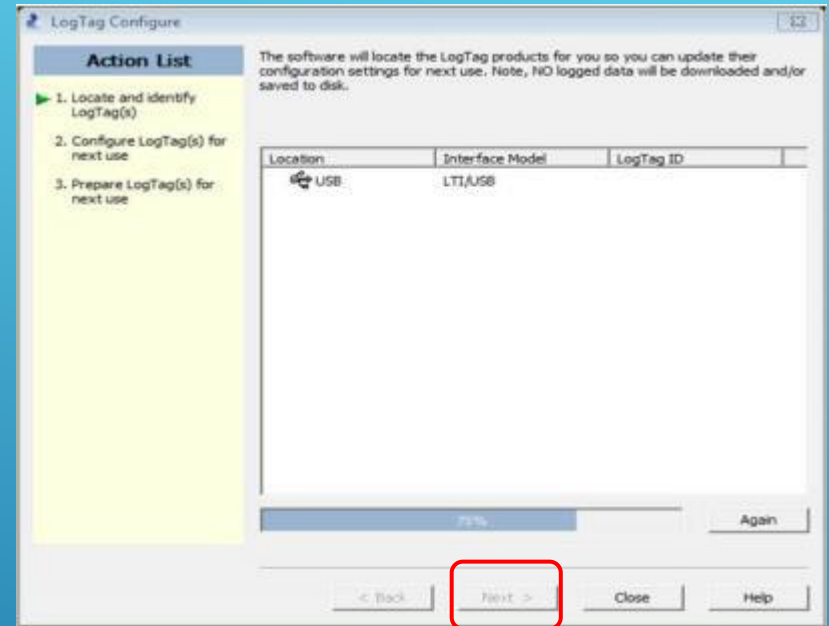
A series of several parallel white lines of varying lengths and positions, all slanted diagonally from the bottom-left towards the top-right, located in the lower right quadrant of the slide.

LogTag Configure: Freezer Logger

Insert the LogTag that you will use in your freezer into the docking station



1. Select “**LogTag**” and “**Configure**”



2. Wait while the computer program locates the LogTag. If this window does not automatically close on its own, select “**Next**” once the software has searched for the LogTag Device.

LogTag Configure: Freezer Logger

3. Enter your VFC PIN #, clinic name, and Freezer in the "User ID" field. (If you have more than one Freezer, label them 1 and 2 or A and B.

4a. Enter **15 minutes** in the "Record a reading every" field. "Readings recorded" will automatically change to span at least 80 days.

4b. Make sure **0 minutes** is in the space after "Begin recording after delay of"

LogTag Configure

Action List

User ID: 1313 Sunny Day Freezer

LogTag battery: OK

Push button start

Enable pre-start logging

Record readings continuously, overwrite oldest when memory full

Record readings so that:

Readings recorded will span at least 80 days

Number of readings to record 7,680 maximum is 7777

Record a reading every 15 Minutes

Begin recording after a delay of 0 Minutes

Trigger alarm when readings above/equal 5 °F

After 4 Consecutive violation readings (1 Hour)

Trigger alarm when readings below/equal -40 °F

After 2 Accumulative violation readings (None)

Configure requires a password

Download requires a password

Advanced Options

< Back Next > Close Help

"Readings recorded" will automatically change to span at least 80 days.

LogTag Configure: Freezer Logger

LogTag Configure

User ID: 1313 Sunny Day Freezer

Push button start LogTag battery: OK

Enable pre-start logging

Record readings continuously, overwrite oldest when memory full

Record readings so that:

Readings recorded will span at least 80 days

Number of readings to record 7,680 maximum is 7777

Record a reading every 15 Minutes

Begin recording after a delay of 0 Minutes

Trigger alarm when readings above/equal 5 °F

After 4 Consecutive violation readings (1 Hour)

Trigger alarm when readings below/equal -40 °F

After 2 Accumulative violation readings (None)

Configure requires a password

Download requires a password

Advanced Options

< Back Next > Close Help

5. Check "Trigger alarm when readings above/equal" and enter 5 if you record in Fahrenheit or -15 if you record in Celsius.

6. Check "After" and enter "4 consecutive"

7. Check "Trigger alarm when readings below/equal" and enter -40 if you record in Fahrenheit or Celsius.
Leave the "after" box unchecked.

LogTag Configure: Freezer Logger

LogTag Configure

User ID: 1313 Sunny Day Freezer

Push button start LogTag battery: OK

Enable pre-start logging

Record readings continuously, overwrite oldest when memory full

Record readings so that:

Readings recorded will span at least 80 days

Number of readings to record 7,680 maximum is 7777

Record a reading every 15 Minutes

Begin recording after a delay of 0 Minutes

Trigger alarm when readings above/equal 5 °F

After 4 Consecutive violation readings (1 Hour)

Trigger alarm when readings below/equal -40 °F

After 2 Accumulative violation readings (None)

Configure requires a password

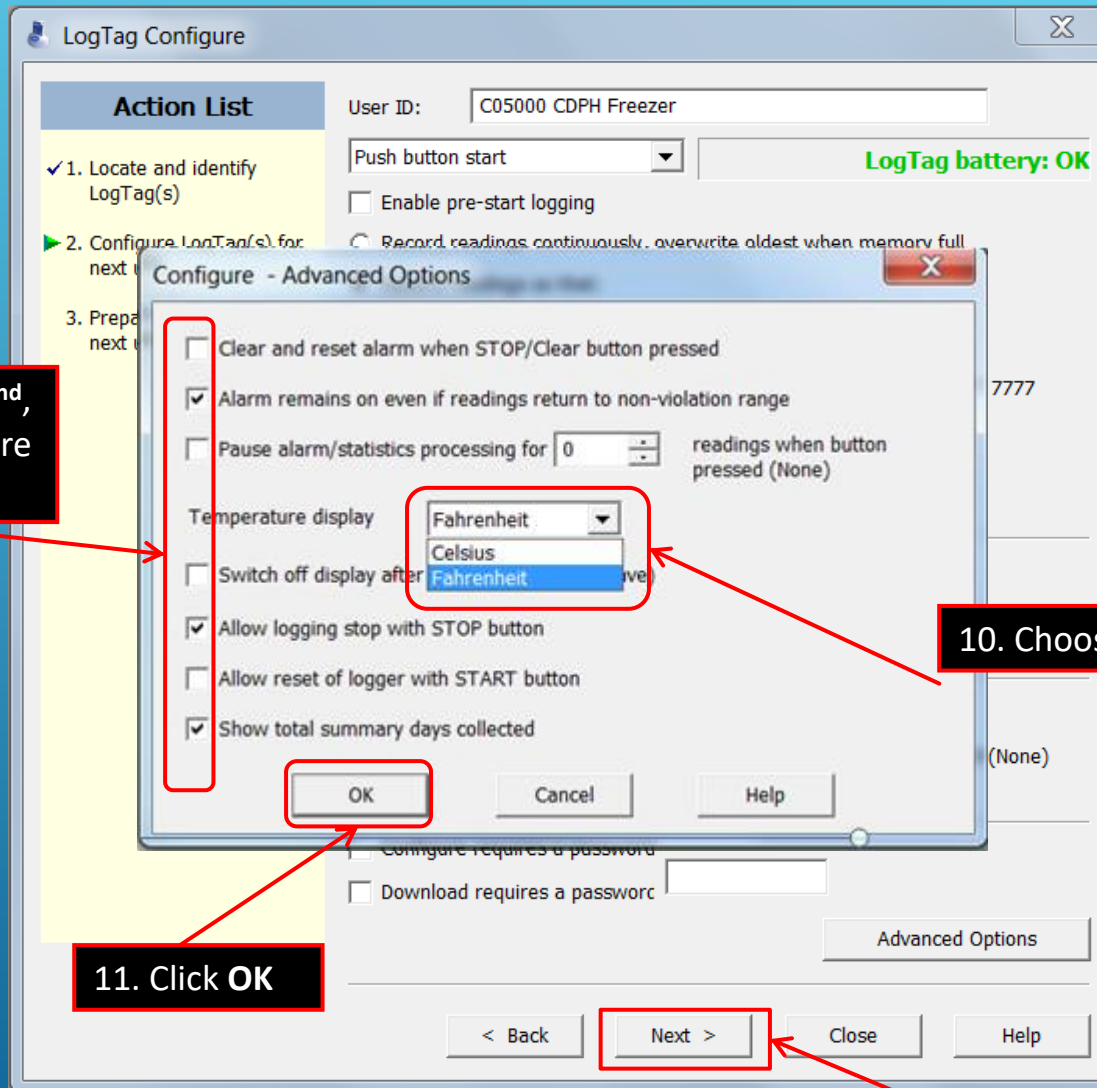
Download requires a password

Advanced Options

< Back Next > Close Help

8. Click "Advanced Options"

LogTag Configure: Freezer Logger



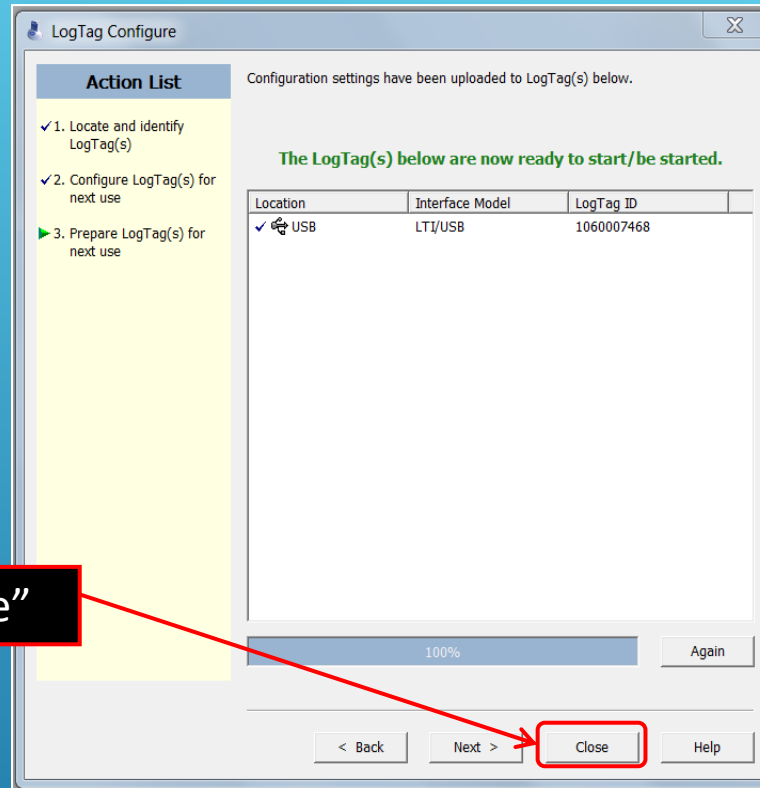
9. Make sure the 2nd, 5th, and 7th boxes are checked.

10. Choose Fahrenheit or Celsius

11. Click OK

12. Click Next

LogTag Configure: Freezer Logger



13. Click "Close"

Congratulations! You are done configuring the freezer logger. Remove the logger from the cradle and label the back "Freezer." If you have more than one unit, also include the unit number.