



# Setting up the Cloud

Control Solutions Vaccine Temperature  
Monitoring Cloud (VTMC)

**Control Solutions**  
**Vaccine Temperature Monitoring Cloud**

# Table of Contents:

STEP 1: Download Updated “Control Solutions VTMC” pg. 6

STEP 2: Set up and Test Connection pg. 9

Additional Information: pg. 21

# Step 1: Download Updated “Control Solutions VTMC”

1. <https://www.vfcdataloggers.com/test2>

HOME VFC COMPLIANT LOGGERS ALL PRODUCTS SOFTWARE DOWNLOADS CALIBRATION

Home

## test2

Please note: All software is Windows only unless otherwise specified.

### LogTag/VFC 400 Software (VTMC)

2. [Control Solutions VTMC Software Version 3.1 revision 11 \(Click to download\)](#)

for use with the VFC400-USB, VFC400-WIFI, and TREL30 Data loggers ONLY --- **NOT FOR USE WITH THE VFC400 W/ Docking Station**

[Click Here for VTMC 3.1.11 release notes](#)

[Click Here for system requirements](#)

[Control Solutions VTMC Software. Version 2.9 revision 6 \(Click to download\)](#)

for use with the original VFC400 and TRED30 (using a docking station)

1. Go to <http://www.vfcdataloggers.com>
2. Click on “Control Solutions VTMC Software Version 3.1 Revision 11”
3. Click “csvtmc\_31r11.exe” at the bottom of the browser

[Control Solutions VTMC Software Version 3.1 revision 11 \(Click to download\)](#)

for use with the VFC400-USB, VFC400-WIFI, and TREL30 Data loggers ONLY --- **NOT FOR USE WITH THE VFC400 W/ Docking Station**

[Click Here for VTMC 3.1.11 release notes](#)

[Click Here for system requirements](#)

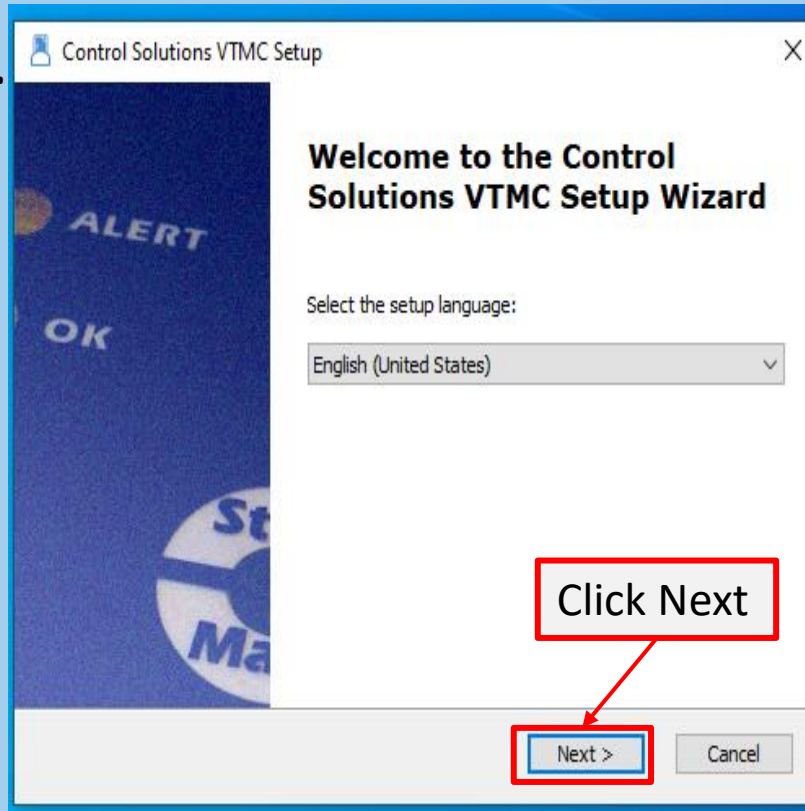
[Control Solutions VTMC Software. Version 2.9 revision 6 \(Click to download\)](#)

3. for use with the original VFC400 and TRED30 (using a docking station)

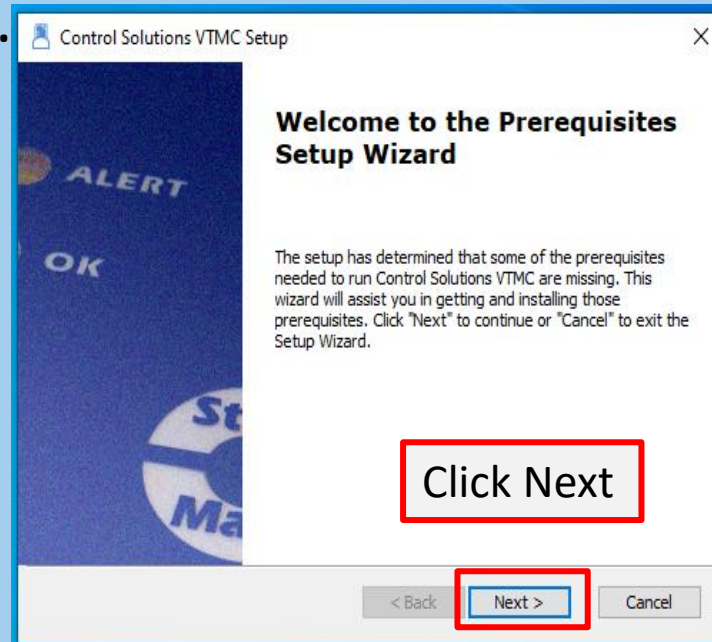
csvtmc\_31r11.exe

# Step 2: Download & Installation (cont'd)

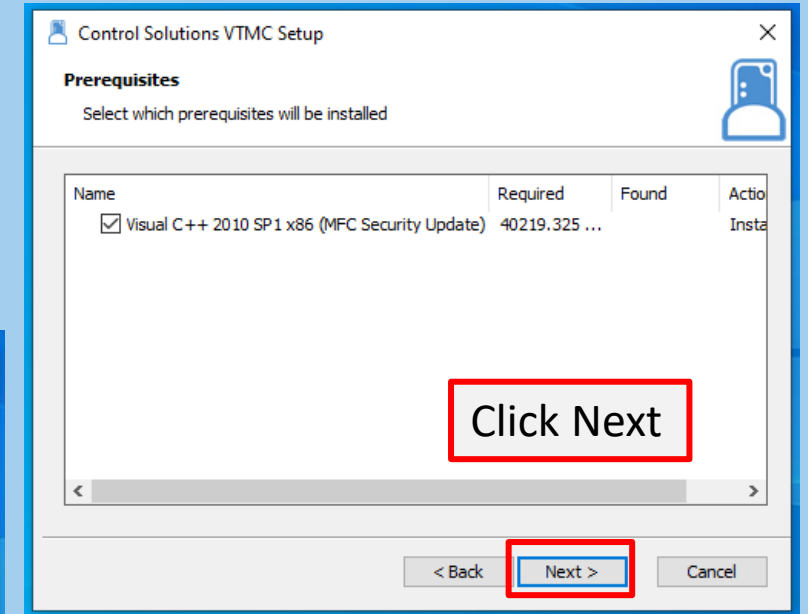
4.



5.

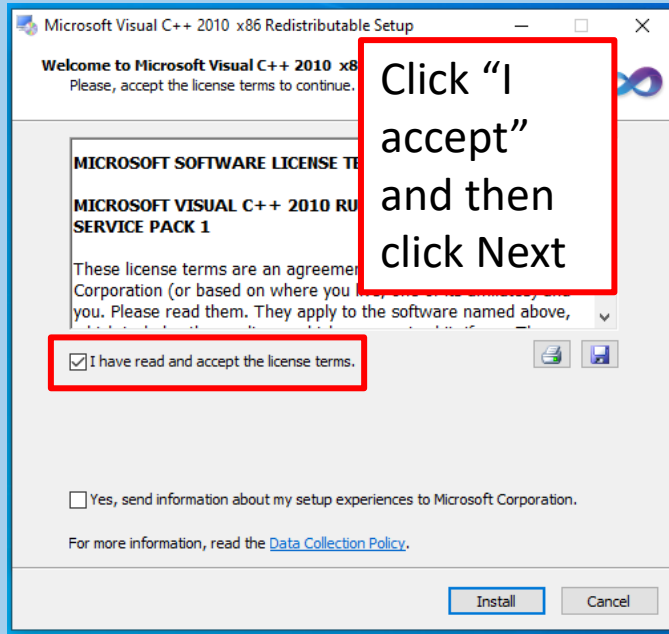


6.

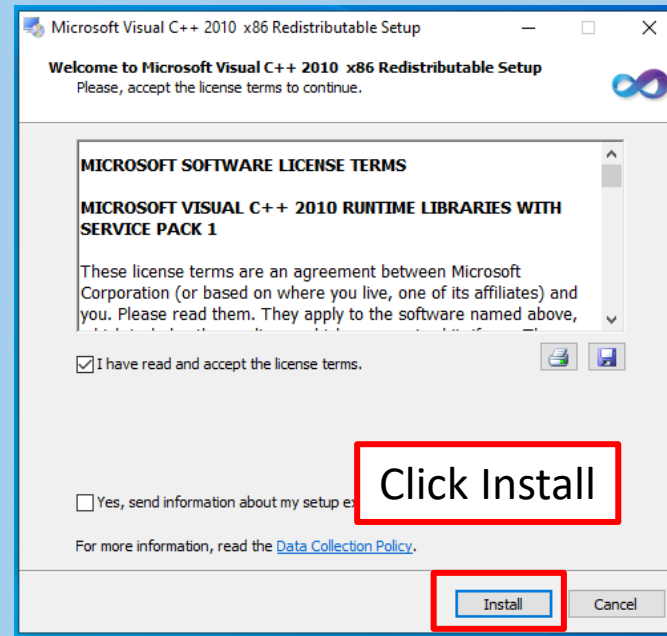


# Step 2: Download & Installation (cont'd)

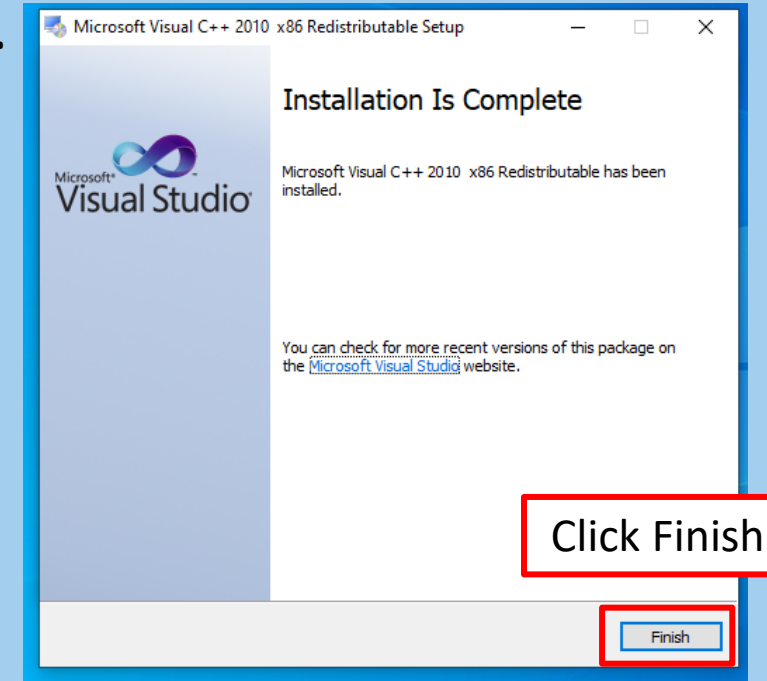
7.



8.

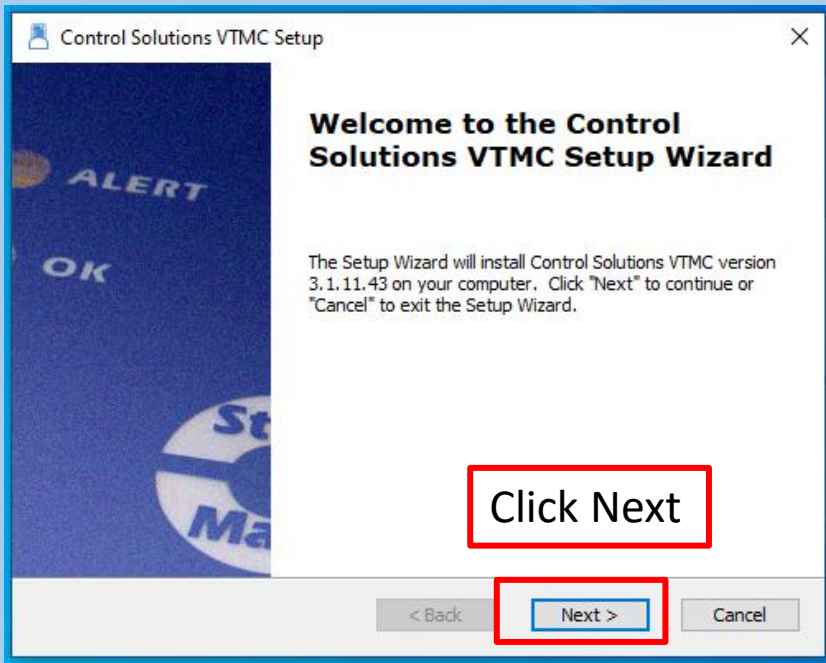


9.

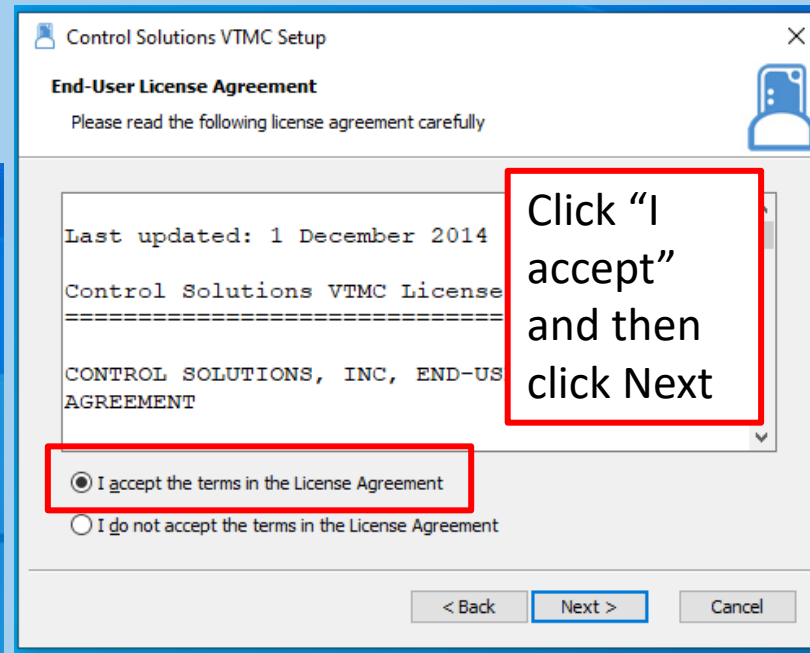


# Step 2: Download & Installation (cont'd)

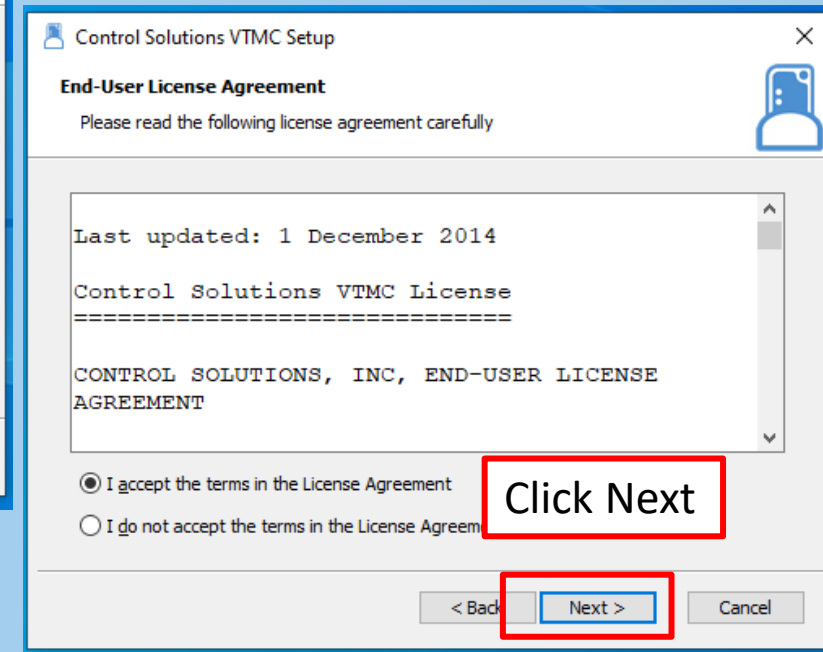
10.



11.

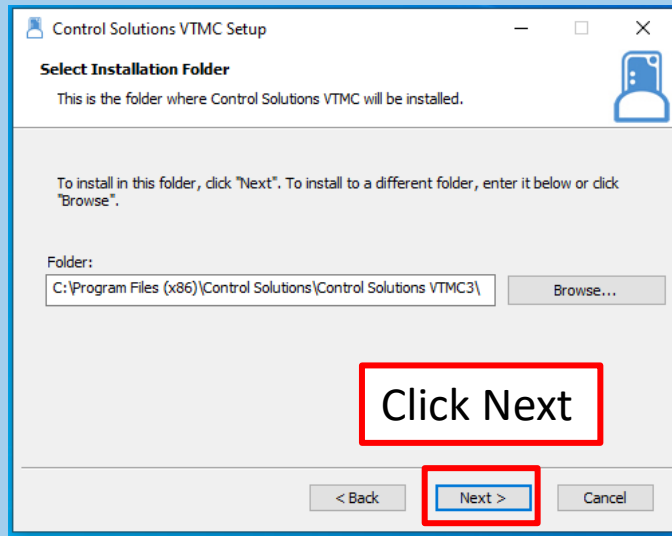


12.

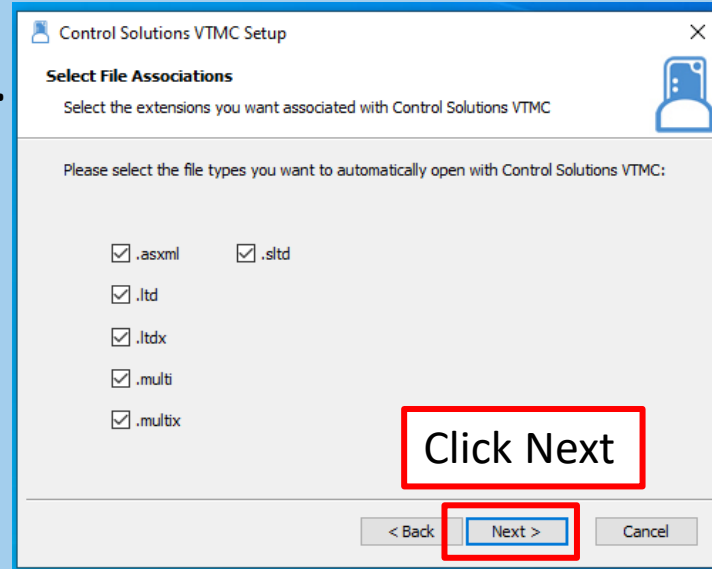


# Step 2: Download & Installation (cont'd)

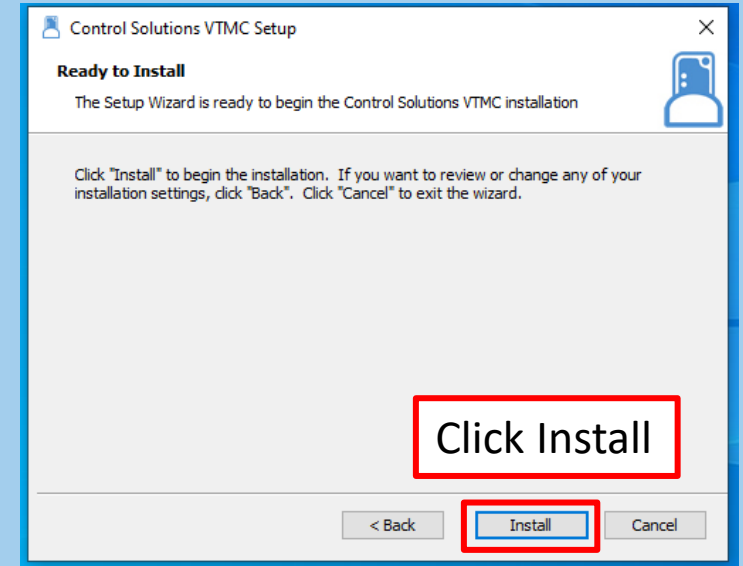
13.



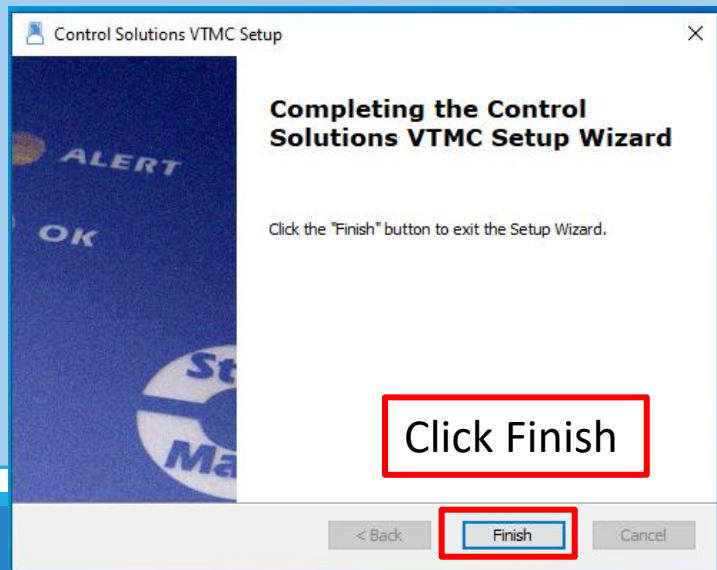
14.



15.



16.



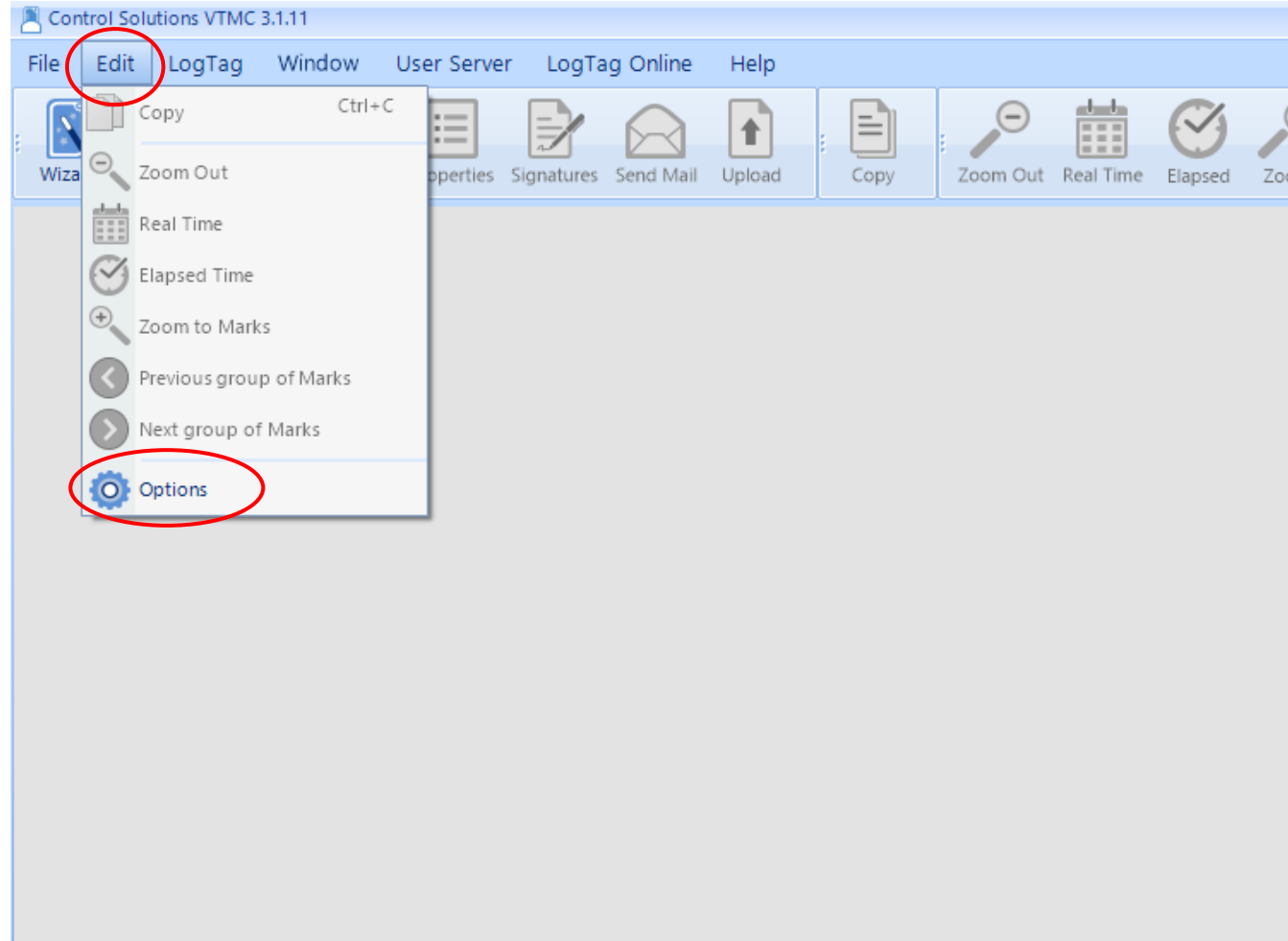
17.



Download and installation complete!  
This icon will appear on your desktop.

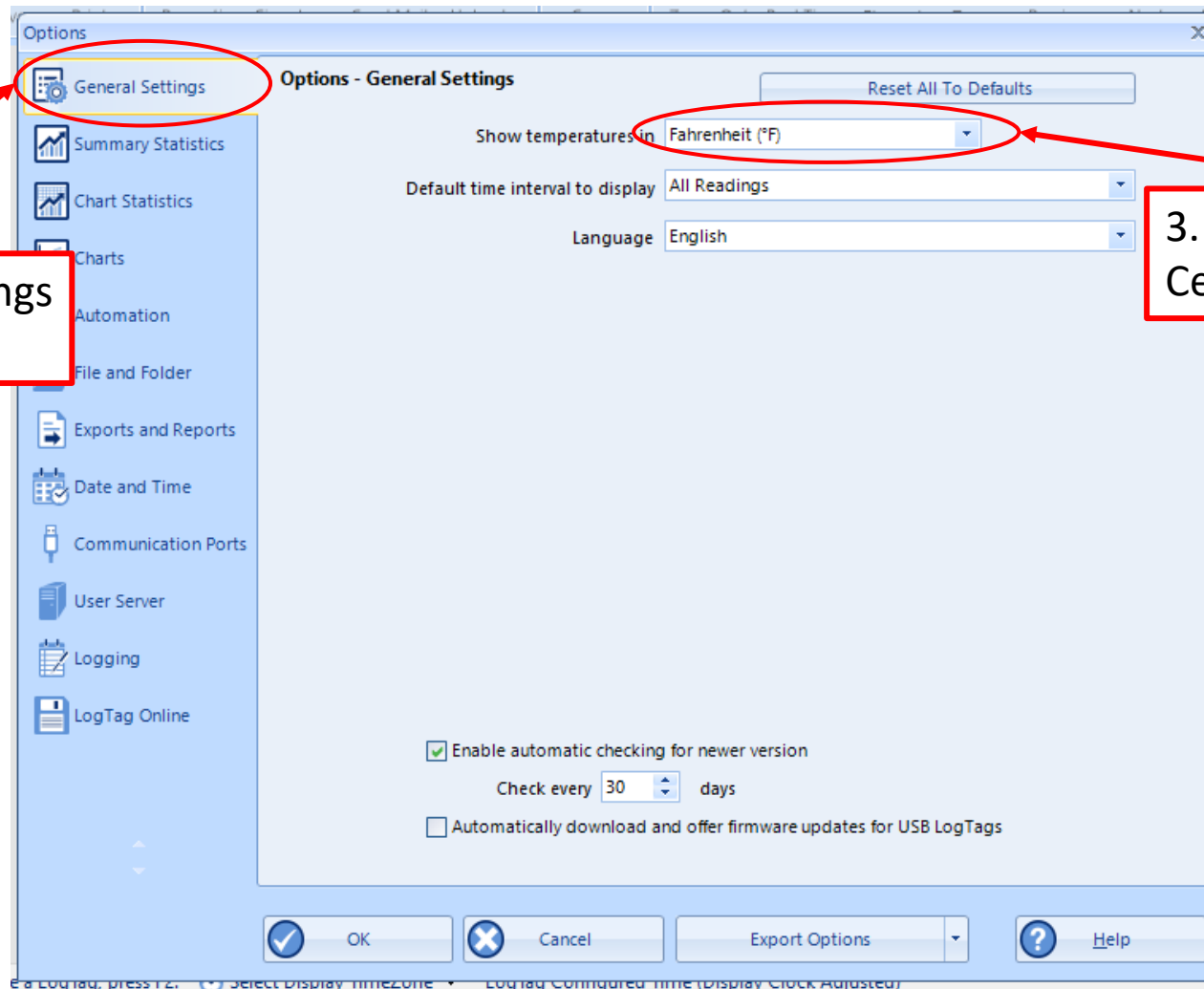
# Step 3: Set up and Test the Connection

1. Click "Edit" and then "Options"





# Step 3: Set up and Test the Connection



2. Select General Settings in the options list

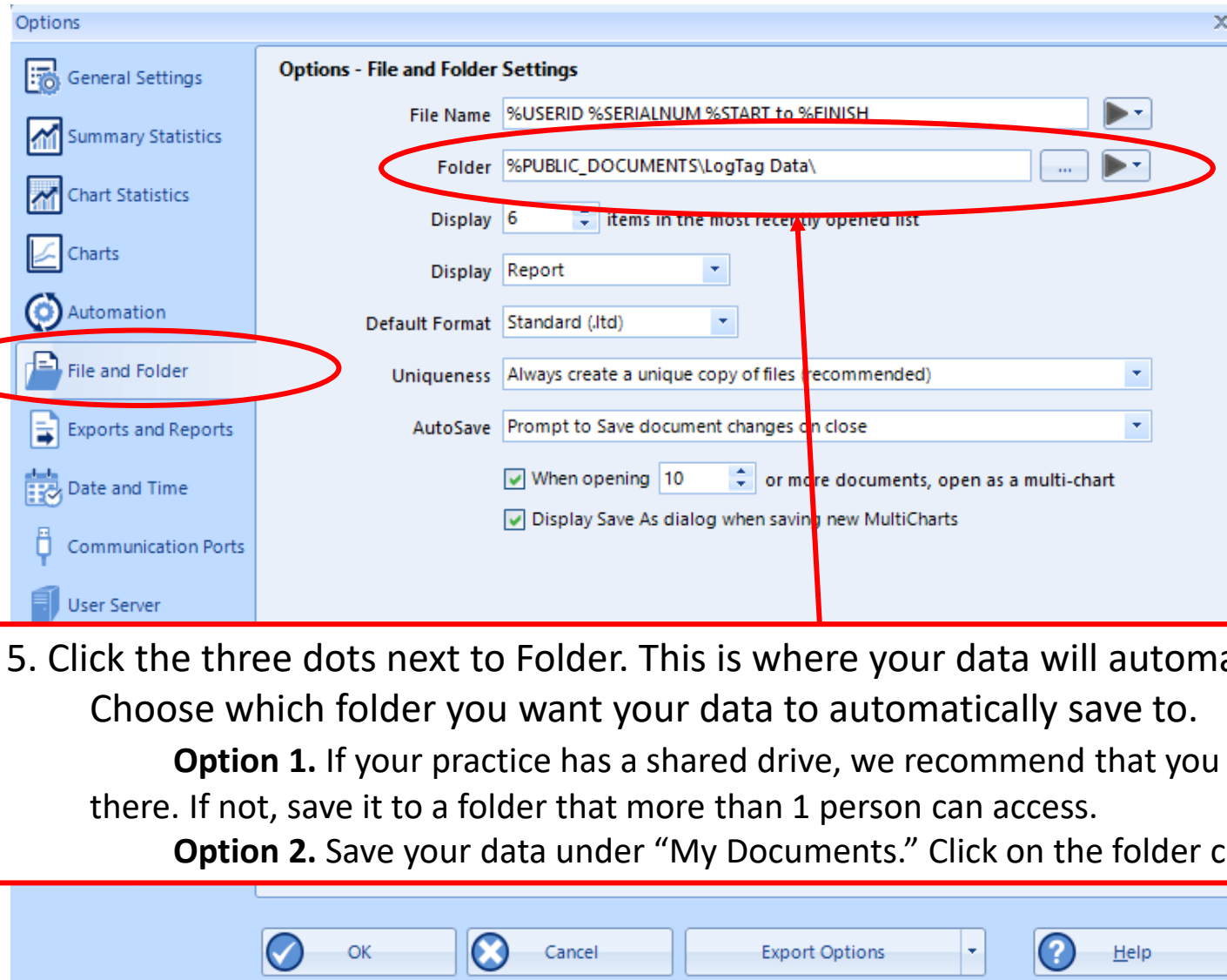
3. Select Fahrenheit or Celsius\*

DO NOT click "OK" until all options in the option list are selected!

\*Select this based on what your clinic records on the temperature logs

# Step 3: Set up and Test the Connection

4. Click on File and Folder Settings

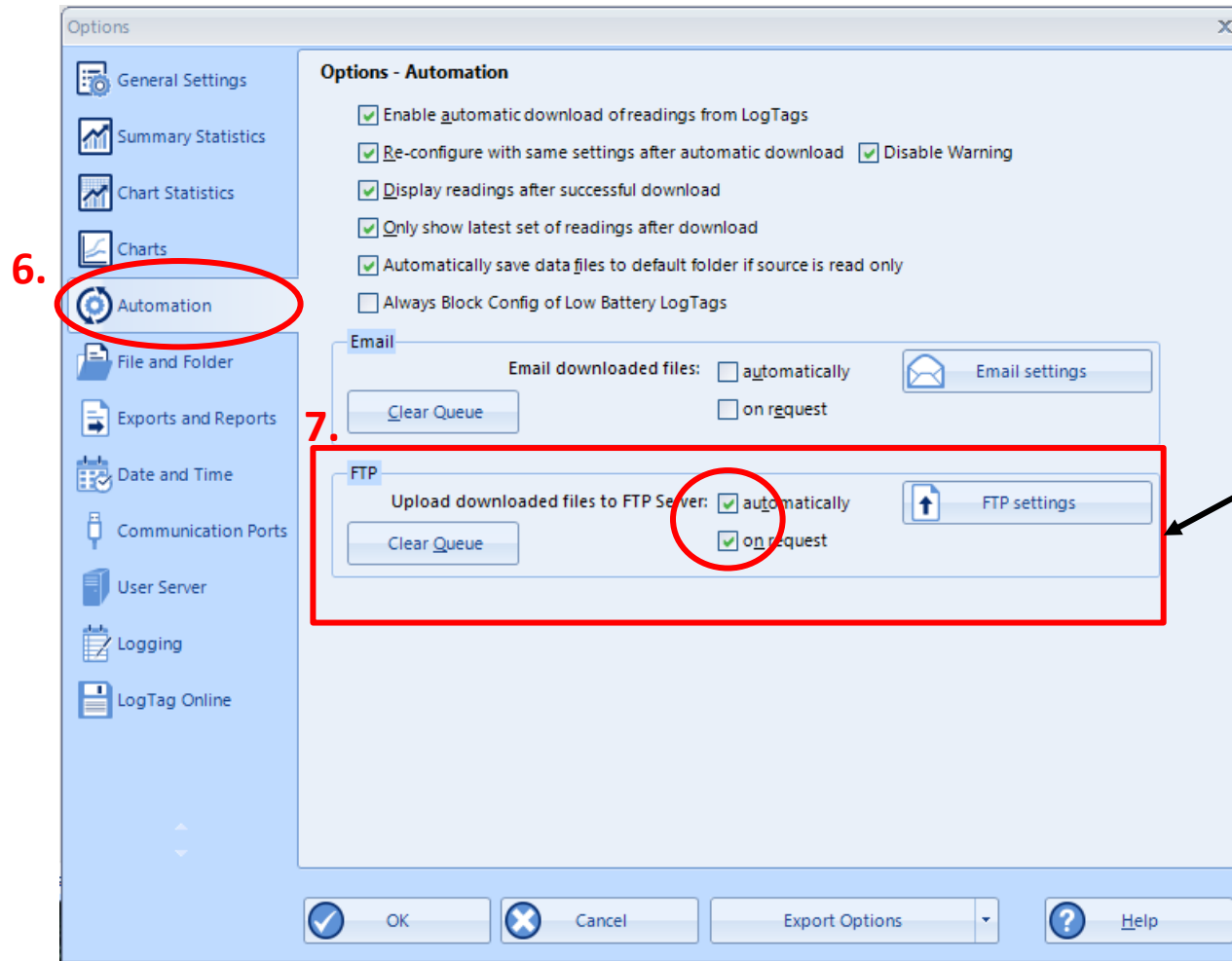


5. Click the three dots next to Folder. This is where your data will automatically save. Choose which folder you want your data to automatically save to.

**Option 1.** If your practice has a shared drive, we recommend that you save the data there. If not, save it to a folder that more than 1 person can access.

**Option 2.** Save your data under “My Documents.” Click on the folder called “MyLogTag Data.”

# Step 3: Set up and Test the Connection



If this section is “grayed out,” press and hold **Shift+F11** to allow it to be edited

6. Click **Automation**  
7. Ensure both “automatically” and “on request” are CHECKED\*\* under the “FTP” section

\*\*Note: These may already be checked when the updated software is downloaded. If this is the case, no action is needed

# Step 3: Set up and Test the Connection

FTP Settings

FTP Server Settings

FTP Server: ftp.ameri-pharma.com

User Name: cs\_user

Password: \*\*\*\*\*

Port: 21

Security protocol

none

SSL

TLS

SETP

Remote Folder: files  Create folder

**8.**

Firewall/Proxy Settings

Use Internet Explorer settings from Registry

Use custom settings

Upload file in the following formats

LogTag File (.ltd / .ltdx / .multix)

CSV (Comma delimited)

PDF (Portable Document Format)

HTML

Text (Macintosh)

Text (Tab delimited)

Advanced Settings

Log uploads, log file in folder

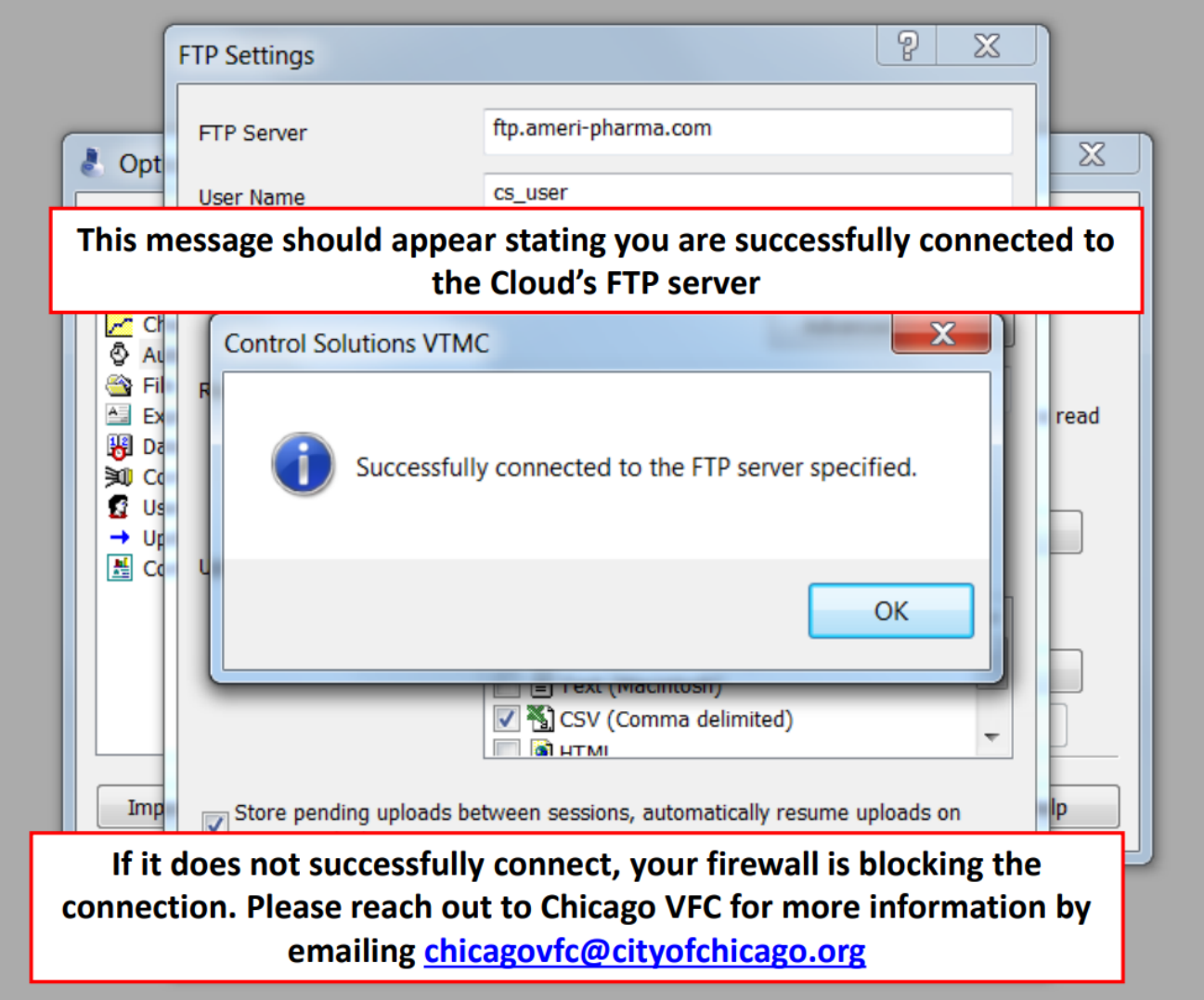
Log connection errors

Store pending uploads between sessions, automatically resume uploads on program startup

These 3 sections should have this information already populated. If not, reach out to [chicagovfc@cityofchicago.org](mailto:chicagovfc@cityofchicago.org)

8. Click “Test Connection” if all fields are already populated

# Step 3: Set up and Test the Connection

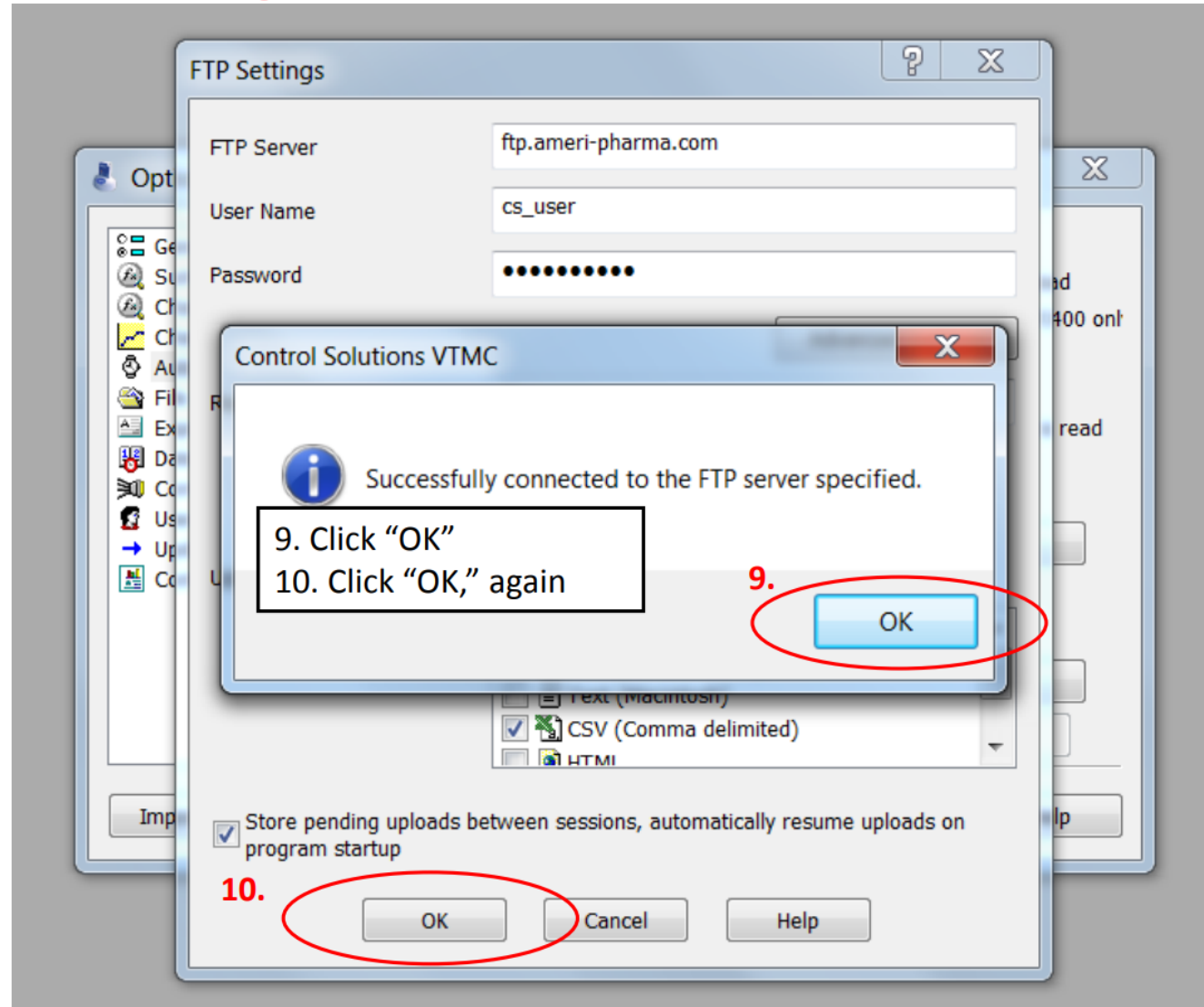


The screenshot shows a Windows desktop environment. In the foreground, there is a dialog box titled "Control Solutions VTMC" with an information icon and the text "Successfully connected to the FTP server specified." and an "OK" button. Behind it is the "FTP Settings" window, which has "ftp.ameri-pharma.com" in the "FTP Server" field and "cs\_user" in the "User Name" field. Below the dialog box, a file explorer window is partially visible, showing a list of file types: "Text (Macintosh)", "CSV (Comma delimited)", and "HTML". At the bottom of the screenshot, there is a red-bordered text box containing instructions.

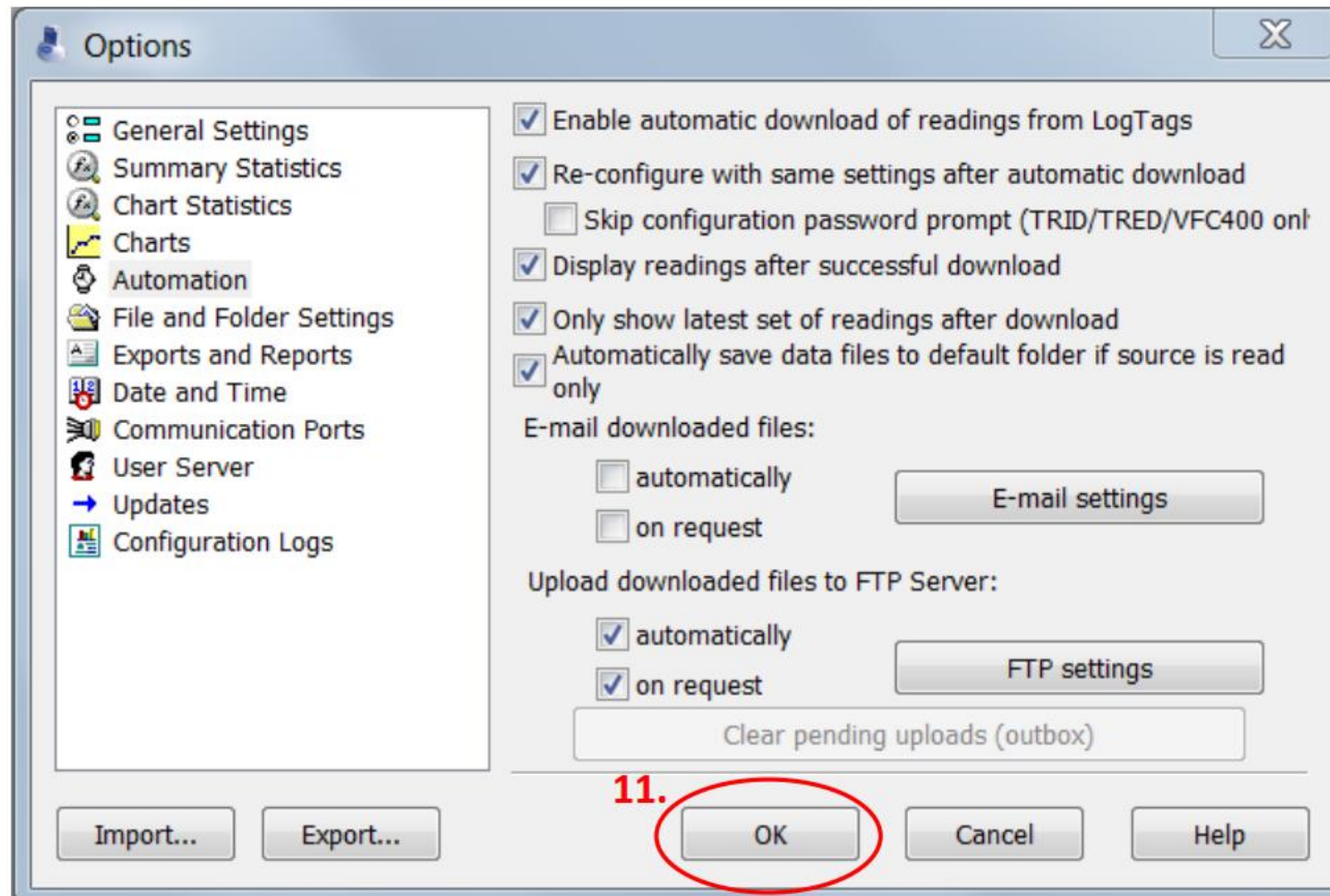
**This message should appear stating you are successfully connected to the Cloud's FTP server**

**If it does not successfully connect, your firewall is blocking the connection. Please reach out to Chicago VFC for more information by emailing [chicagovfc@cityofchicago.org](mailto:chicagovfc@cityofchicago.org)**

# Step 3: Set up and Test the Connection



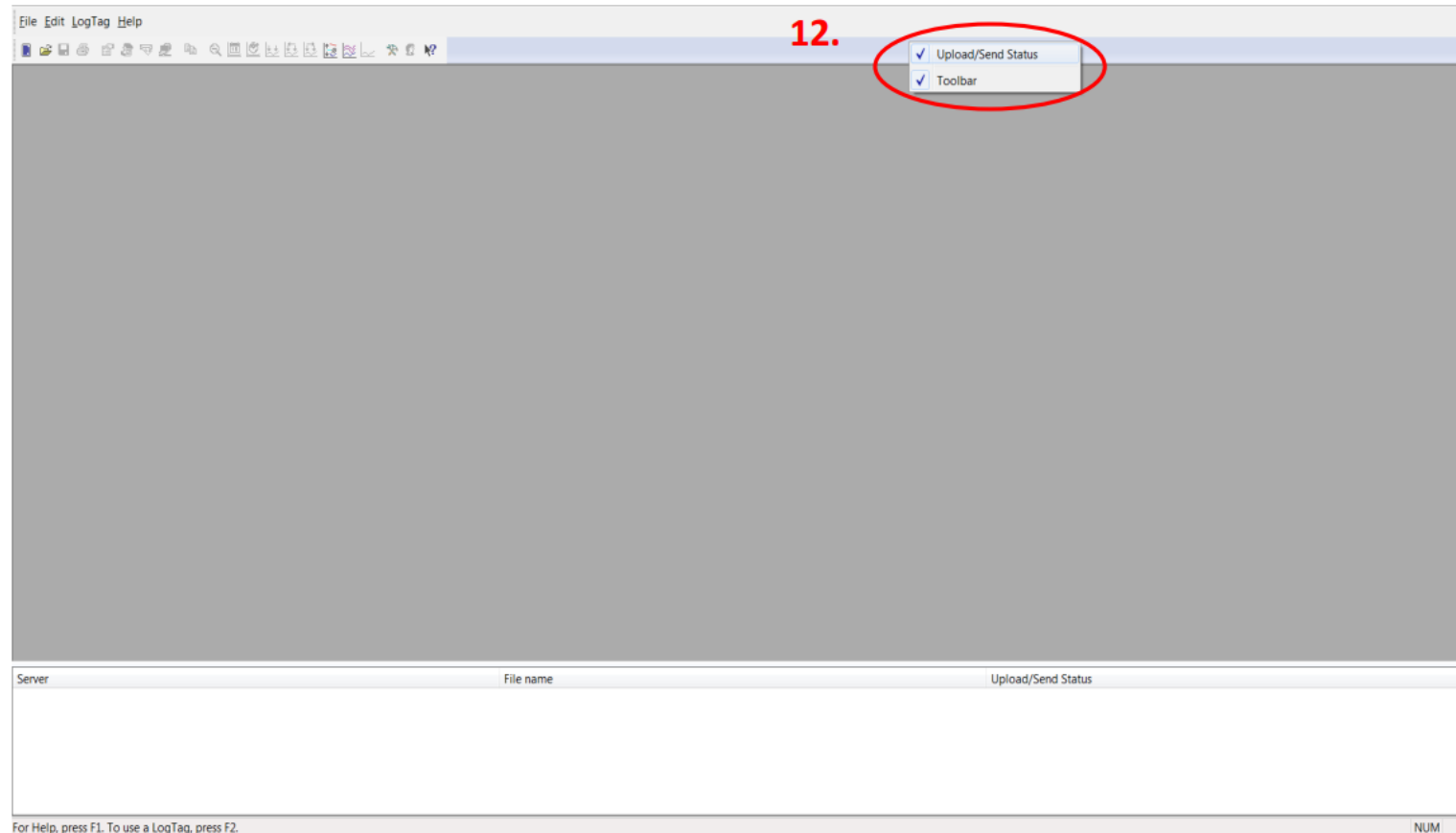
# Step 3: Set up and Test the Connection



11. Click "OK"

# Step 3: Set up and Test the Connection

9. Right click on the right-hand side of the upper menu for a drop-down menu to appear. Make sure "Upload/Send Status" is checked





# Step 3: Set up and Test the Connection

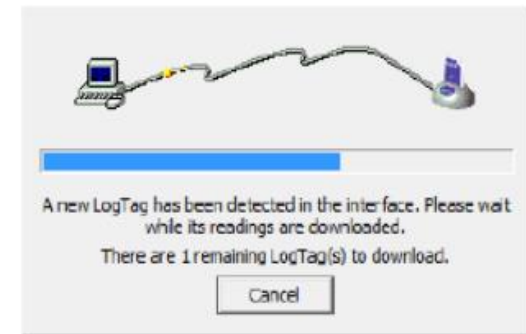
Download the DDL to test the connection:

13. Connect the USB Interface cradle to the computer:  
(If it is not already connected)

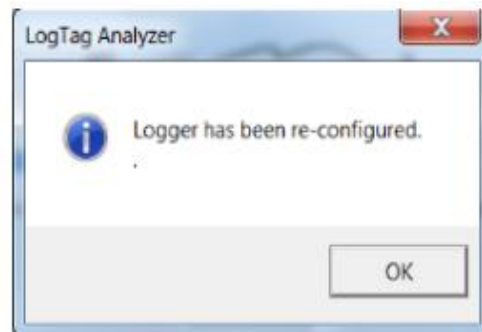


14. Insert recorder into cradle:

**Data is automatically downloaded and saved.** You will see this animation:



15. Click OK when you are notified that the recorder has been reconfigured:

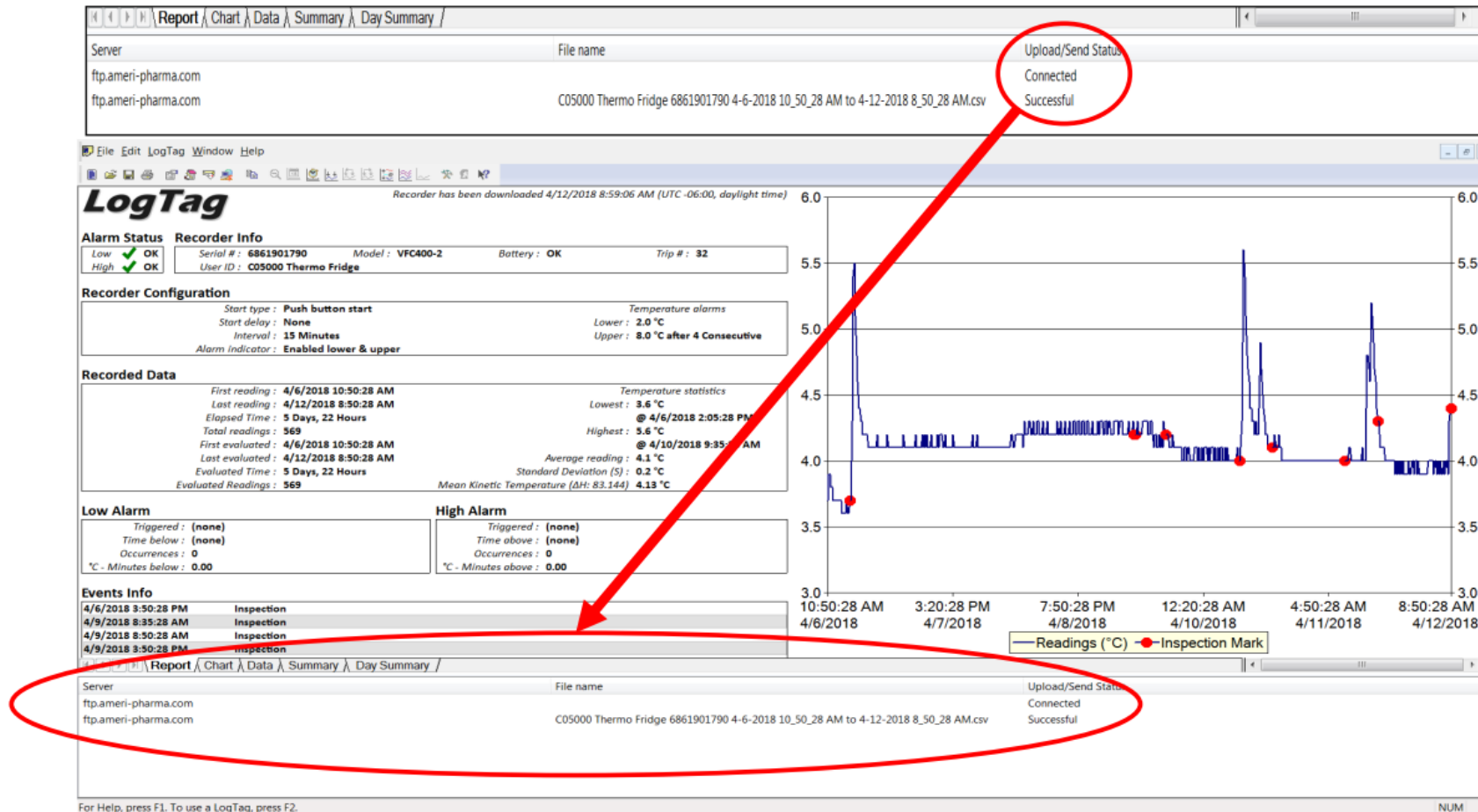


# Step 3: Set up and Test the Connection

16. Your data report should appear

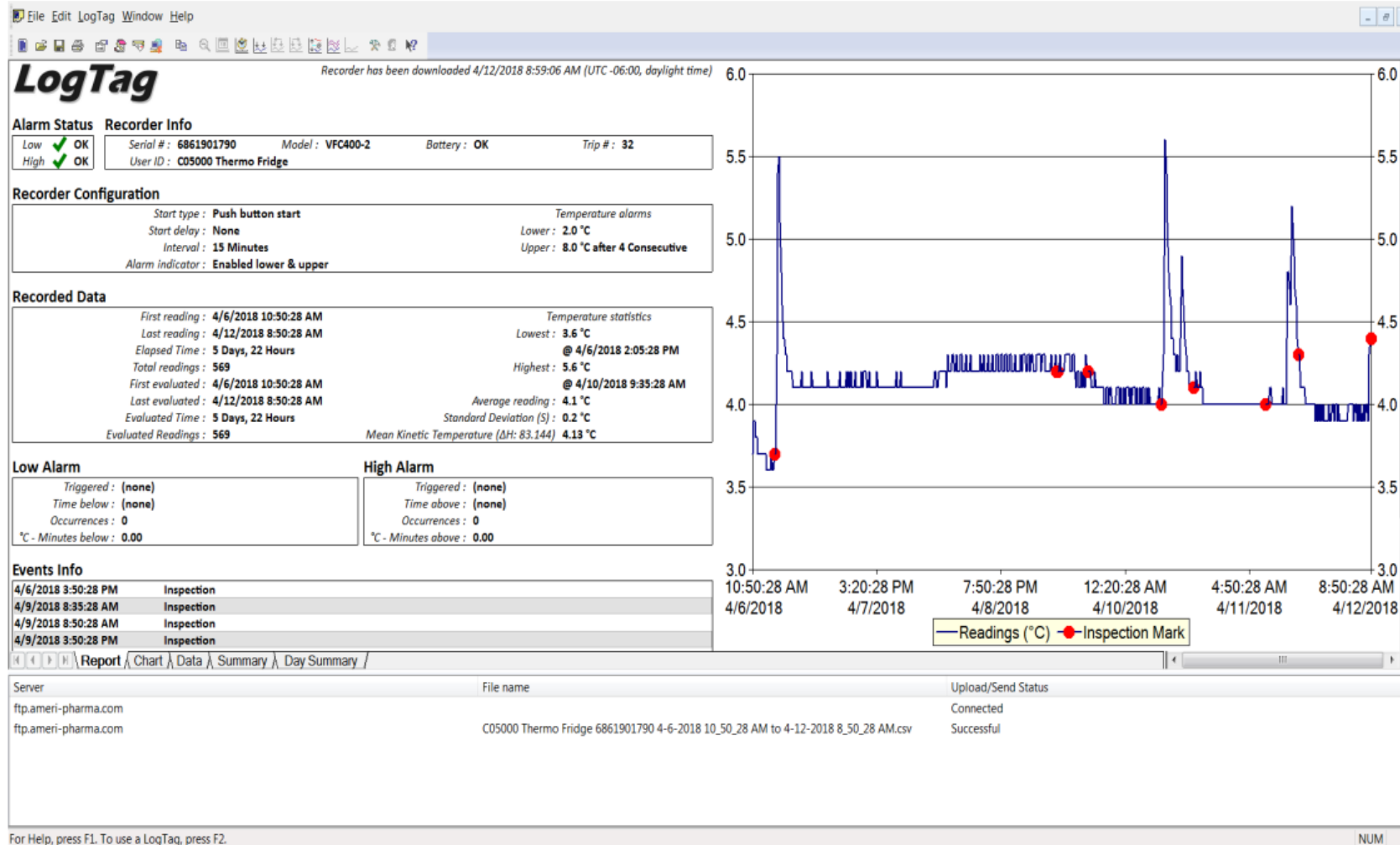
17. A status message will appear in the space at the bottom of the screen:

\*It MUST say “Connected” and “Successful” for the data to have uploaded



# Step 3: Set up and Test the Connection

Congratulations! Your DDL data has been uploaded to the Cloud!!



# Additional Information

- You can view your uploaded data by visiting <https://vtmc.ameri-pharma.com/>
  - Use your email address that you submitted on the form to log in
  - First-time password is based on your name:
    - Name: Cheese Cake
    - Password: CCake123
- The files are uploaded based on DDL serial number
  - Found on the back of the data logger:
    - S/N example = 1860917494
- **If this changes** (new DDL is purchased, primary DDL is out for recalibration, etc.) **please email [chicagovfc@cityofchicago.org](mailto:chicagovfc@cityofchicago.org) with the replacement serial number...otherwise, the data will not go to the Cloud**

