



# CONTROL SOLUTIONS VTMC

SOFTWARE  
DOWNLOAD AND  
SETTINGS



# Software Download & Installation

The image shows a screenshot of the Control Solutions Inc. website. The browser's address bar at the top contains the URL [www.vfcdataloggers.com](http://www.vfcdataloggers.com), which is highlighted with a red box. Below the address bar, the website's navigation menu includes links for Products, Calibration, Cloud, Software Download (highlighted with a red box), Support, Our Company, and Contact. The main content area features the company logo and name, "CONTROL SOLUTIONS INC.", followed by a tagline: "Providing facility monitoring solutions for the Vaccines for Children program and beyond." A product featured is the "COOL CUBE™", described as "The best compact thermal protection product" with a price range of "\$649.00 - \$1,499.00" and a "SHOP NOW" button. At the bottom, there are sections for "CALIBRATION", "OUR SERVICES", "CLOUD", and "SOFTWARE". A chat window is visible in the bottom right corner with the text "OUR SALES TEAM IS HERE TO HELP YOU" and a "Chat with an agent" button. Two red callout boxes with white text and red borders provide instructions: "1. Go to www.vfcdataloggers.com" and "2. Click 'Software Downloads'". Red arrows point from these boxes to the respective elements on the website.

1. Go to [www.vfcdataloggers.com](http://www.vfcdataloggers.com)

2. Click "Software Downloads"

# Download & Installation (cont'd)

**CONTROL SOLUTIONS**

503-410-5898 NEW TO DATA LOGGERS? PRODUCT RECOMMENDATIONS ACCOUNT CART Search

Products ▶ Calibration ▶ Cloud Software Download Support ▶ Our Company ▶ Contact

## DOWNLOAD THE LATEST SOFTWARE

Up-to-date software is essential for properly functioning equipment. By investing in quality software, you ensure the safety and longevity of your supplies. Use the toggles below to select your preferred device, then simply click "Download Software" in the pop-up menu to begin the process.

Our team of experienced professionals can also help guide you to the latest software for all our devices. Visit our contact page to get in touch with a team member, or click the Calibration link below to begin a calibration request.

*Note: All software requires Windows 7 or later. Mac OS is not support unless specified.*

**FIND YOUR SOFTWARE ▶**

**CONTROL SOLUTIONS**

**OUR SALES TEAM IS HERE TO HELP YOU**

Hi, and welcome to Control Solutions. Let us know if there's anything we can help you with.

**Chat with an agent**

**3. Click "Find Your Software"**

# Download & Installation (cont'd)

CONTROL SOLUTIONS

503-410-5996 NEW TO DATA LOGGERS? PRODUCT RECOMMENDATIONS ACCOUNT CART Search

Products ▶ Calibration ▶ Cloud Software Download Support ▶ Our Company ▶ Contact

CHOOSE YOUR DEVICE

Choose your data logger.

VFC400 WITH DOCKING STATION

VFC400 WITH DOCKING STATION

VFC200

VFC5000-TP

VFC400-USB

WIFI WALL MOUNT INTERFACE

VFC150

OUR SALES TEAM IS HERE TO HELP YOU

Hi, and welcome to Control Solutions. Let us know if there's anything we can help you with.

Chat with an agent

*The CDC and the Vaccines For Children Program are not affiliated with Control Solutions or with vfcataloggers.com, and they do not evaluate or endorse any of the products sold on this website.*

4. Click on the drop-down menu.

5. Click on **VFC400 WITH DOCKING STATION**

# Download & Installation (cont'd)

VFC400 WITH DOCKING STATION



The **VFC400 with Docking Station** is currently operating under Control Solutions VTMC 2.9r11. This software is up-to-date as of 2022-12-13.

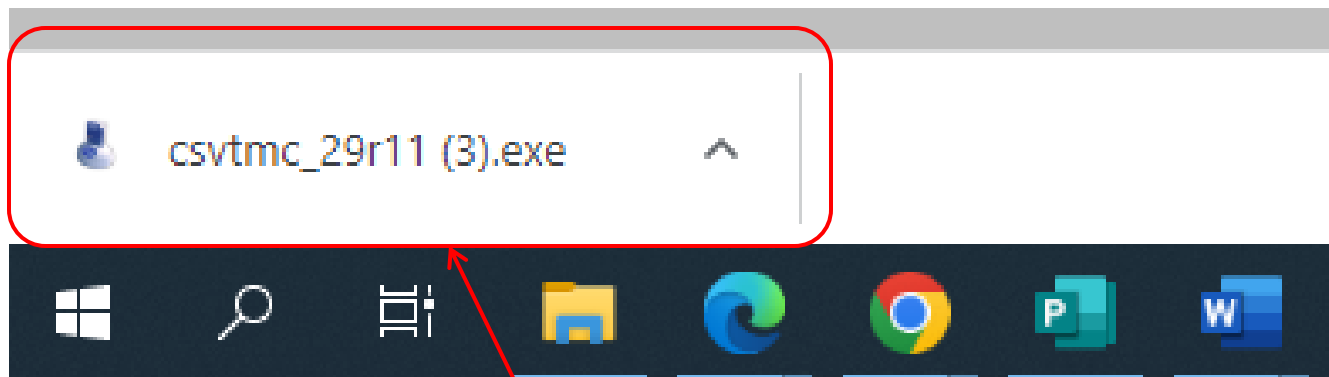
DOWNLOAD SOFTWARE ▶

6. Make sure you will be downloading **Control Solutions VTMC 2.9r11**, which is the most up-to-date software.

7. Click on "Download Software".

\*Note: This software works for **both** the BLUE (LogTag Tred30-7) and the RED (VFC400) DDLs

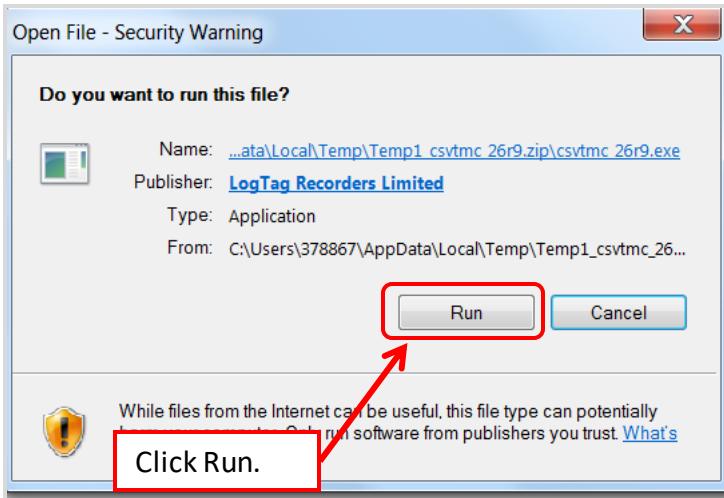
# Download & Installation (cont'd)



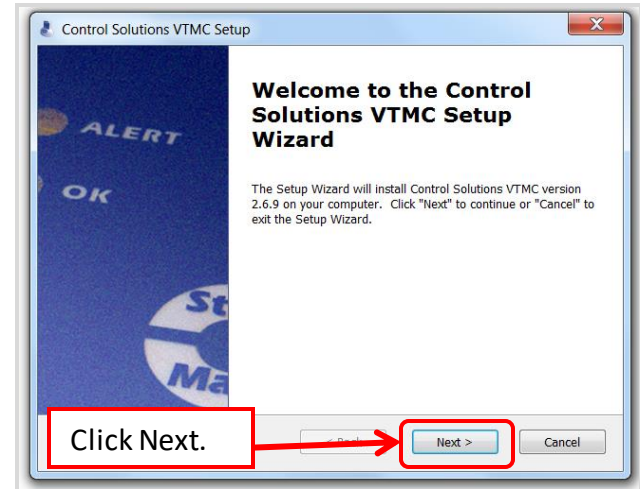
8. Click on the pop-up at the bottom of your browser to start the download.

# Download & Installation (cont'd)

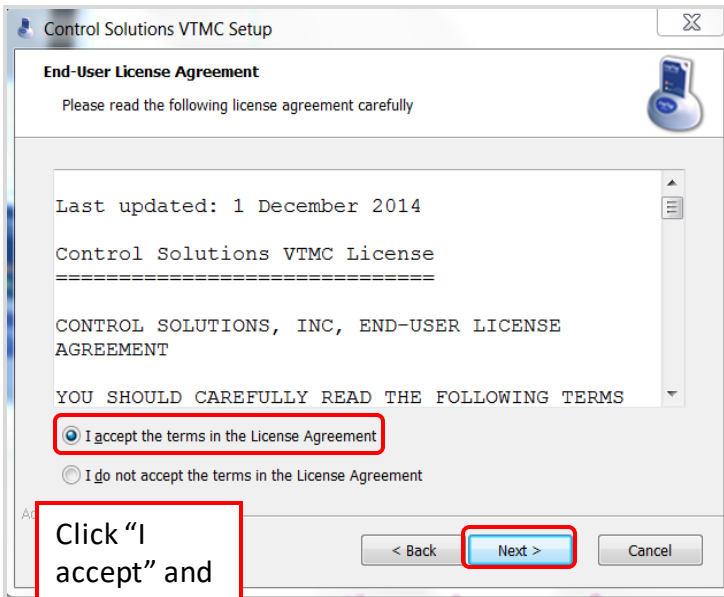
9.



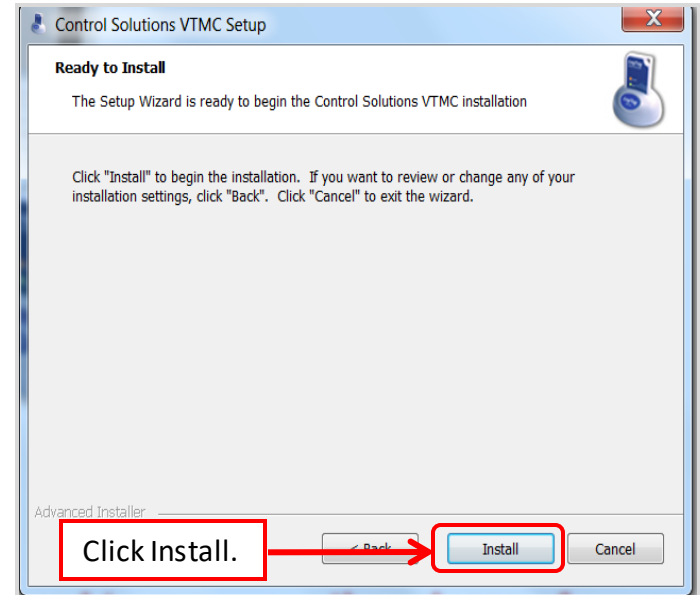
10.



11.

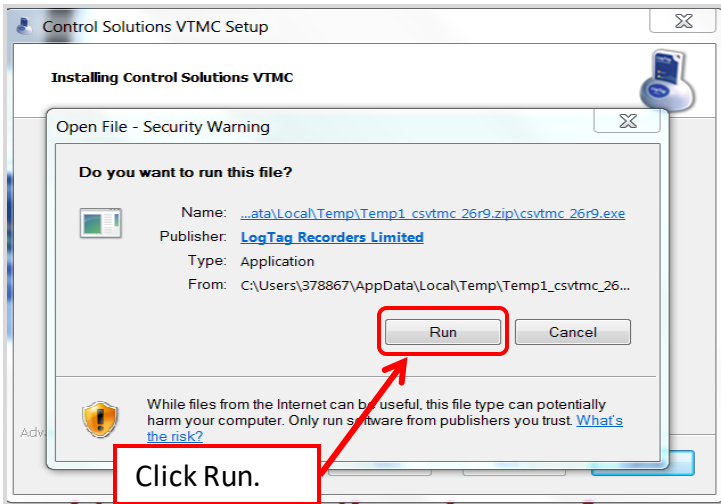


12.

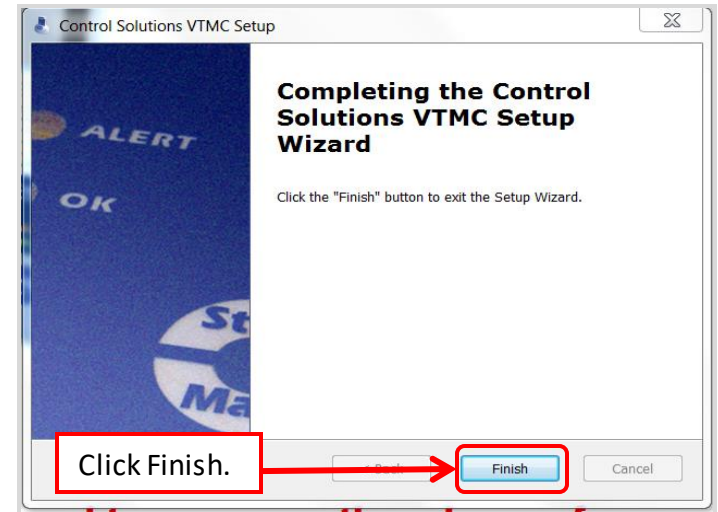


# Download & Installation (cont'd)

13.



14.



15.



Download and installation complete!  
This icon will appear on your desktop.

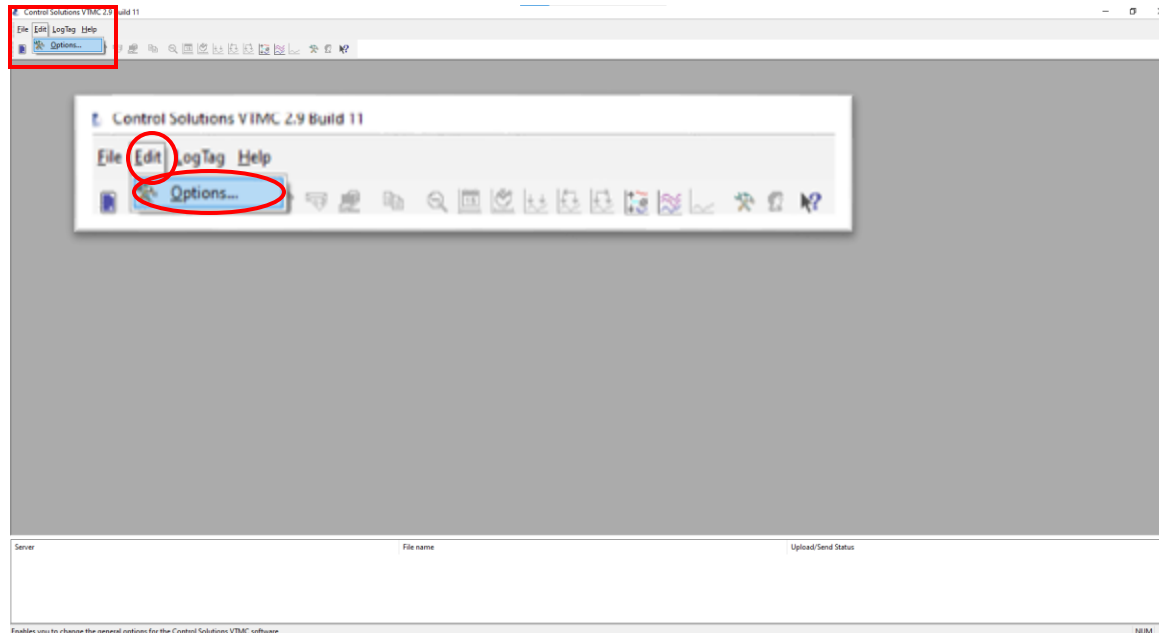


# SECTION III: Setting Your Options

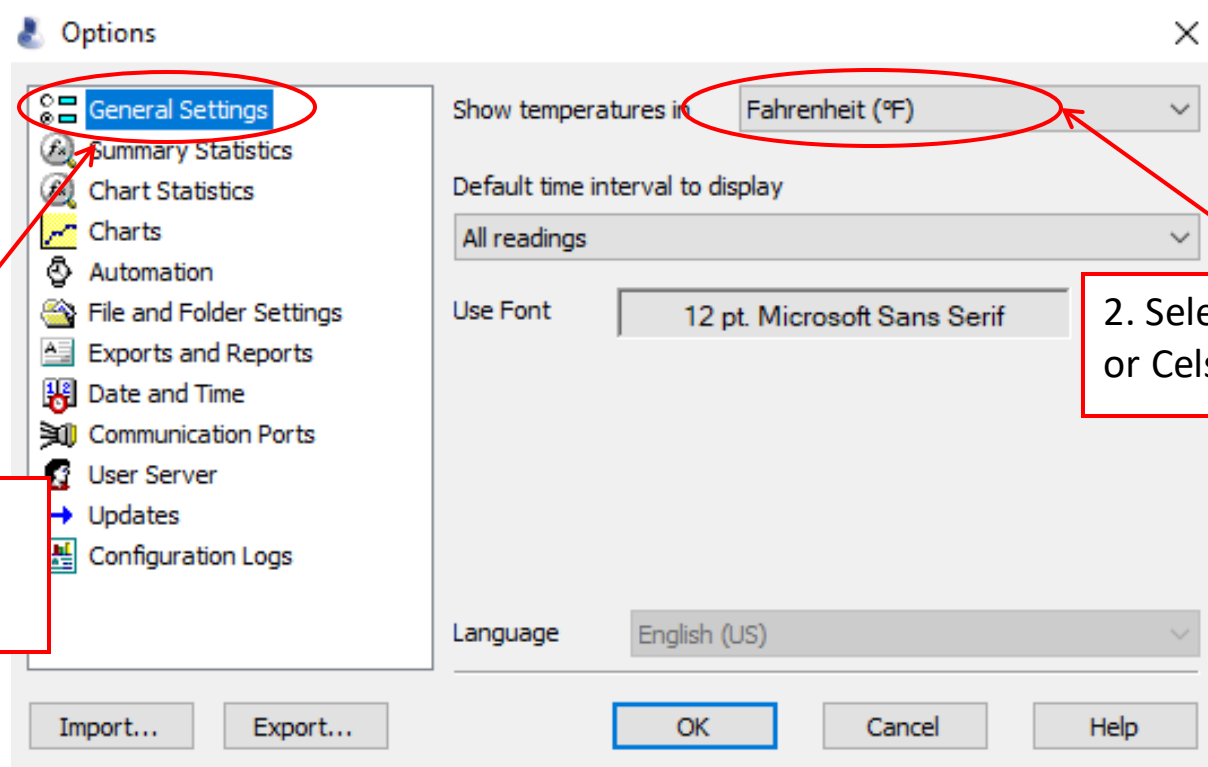
**Step 1:** Click on the Control Solutions icon on your desktop.



**Step 2:** You should see a blank screen when you open the program. Click **“Edit”** in the top left corner and then click **“Options”**



# Options: General Settings



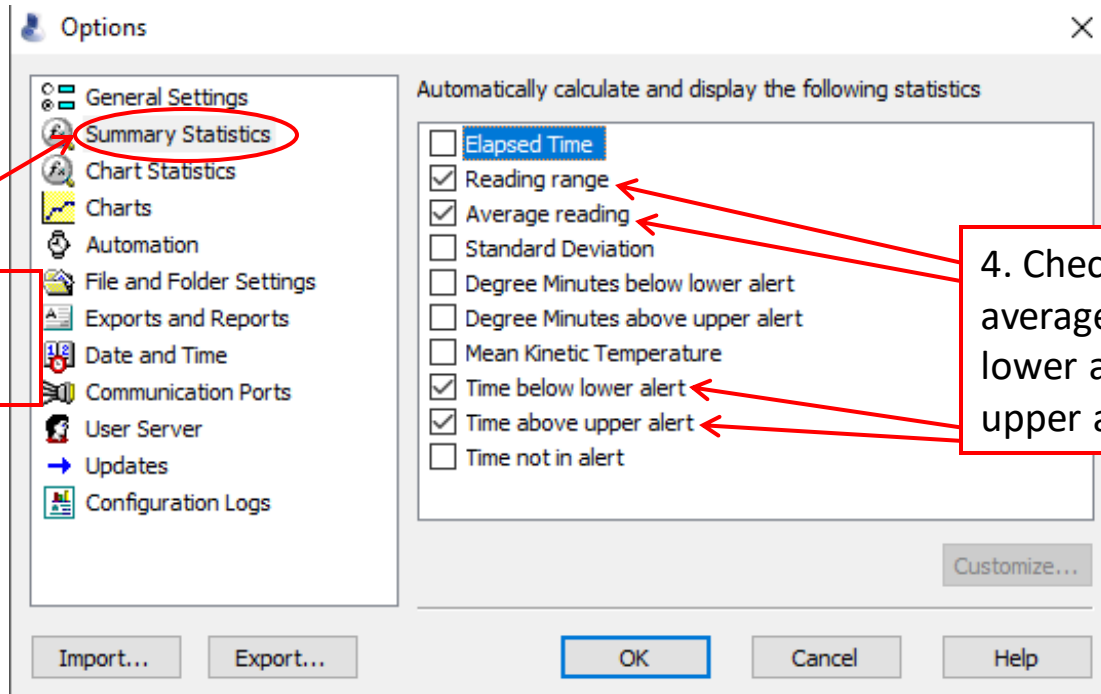
1. Select General Settings in the options list

2. Select Fahrenheit or Celsius\*

DO NOT click "OK" until all options in the option list are selected!

\*Select this based on what your clinic records on the temperature logs

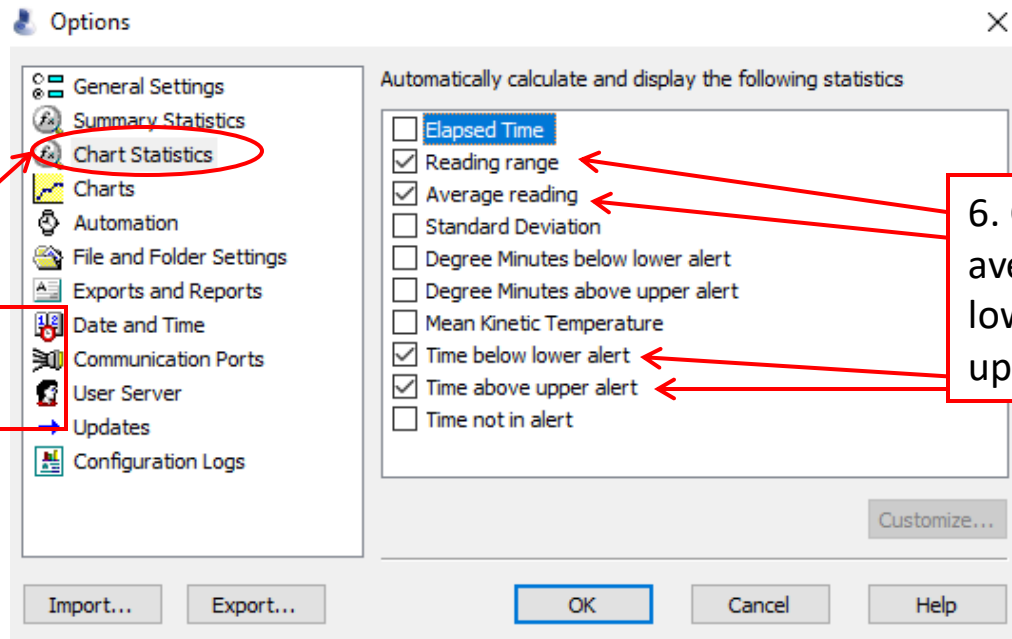
# Options: Summary Statistics



3. Select Summary Statistics

4. Check "reading range, average reading, time below lower alert, and time above upper alert."

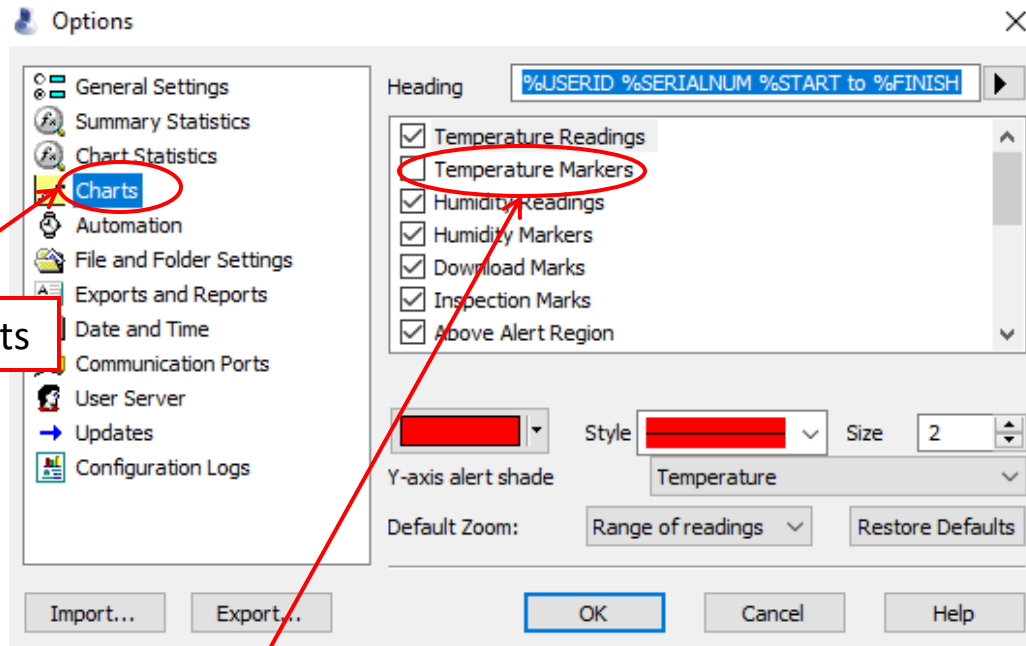
# Options: Chart Statistics



5. Select Chart Statistics

6. Check "reading range, average reading, time below lower alert, and time above upper alert."

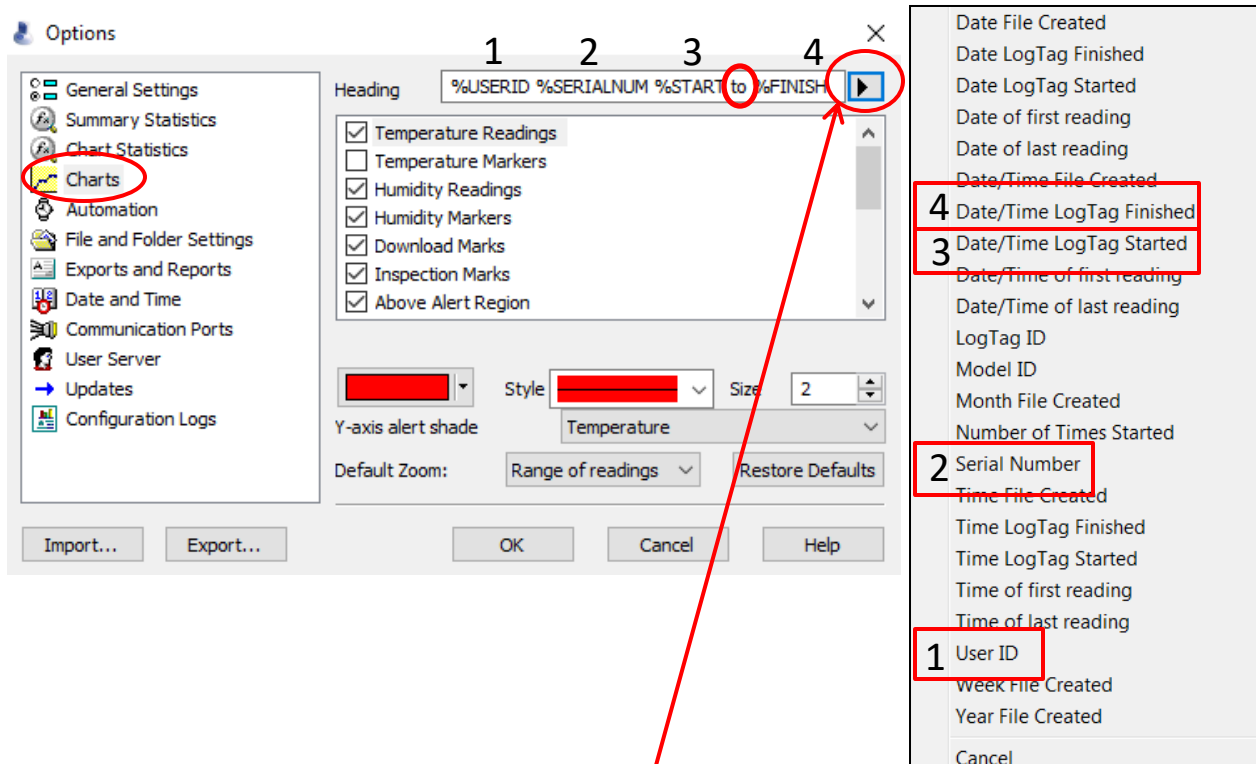
# Options: Charts



7. Select Charts

8. Uncheck "Temperature Markers"

# Options: Charts (cont'd)



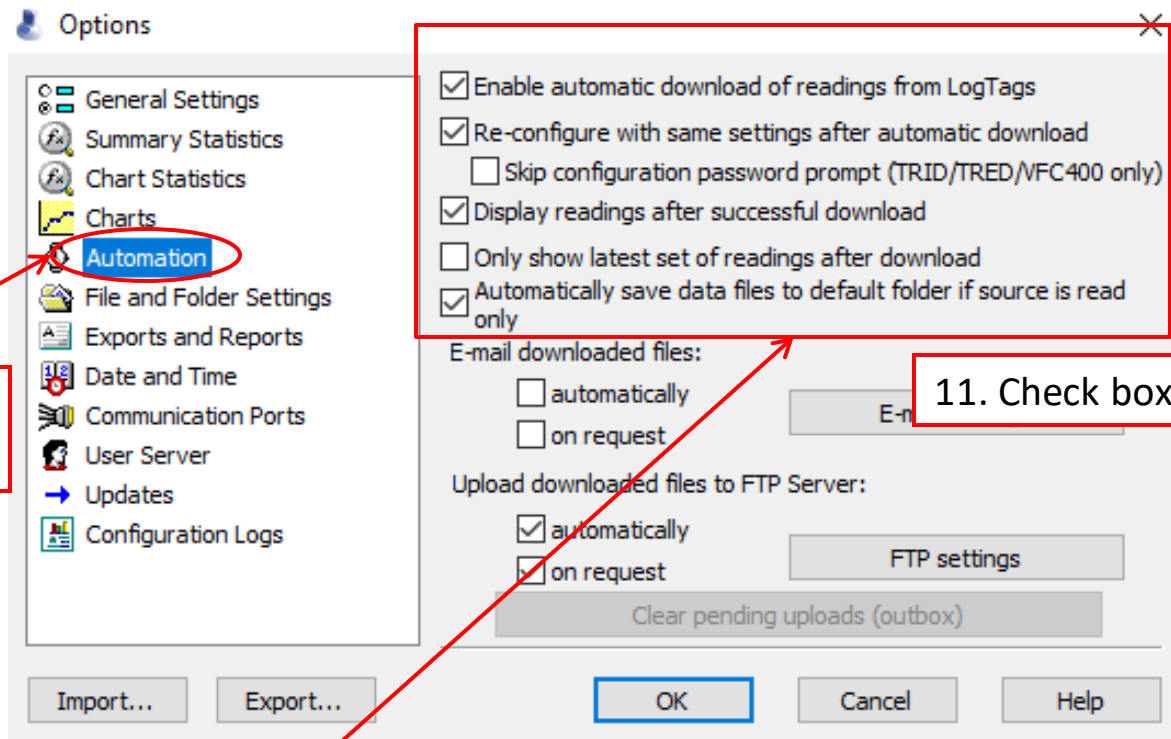
9. Click the arrow next to “Heading.” This will open the drop-down box on the right.

1. Click “**User ID.**” Put the cursor back in the heading box then hit the spacebar on your keyboard.
2. Click on the arrow to open the drop-down box. Click “**Serial Number.**” Then hit the spacebar.
3. Arrow. “**Date/Time LogTag Started.**” Spacebar. Type the word “**TO.**” Spacebar.
4. Arrow. “**Date/Time LogTag Finished.**”

Note: When you finish entering the information in the header it should look like the following:

**%USERID %SERIALNUM %START to %FINISH**

# Options: Automation

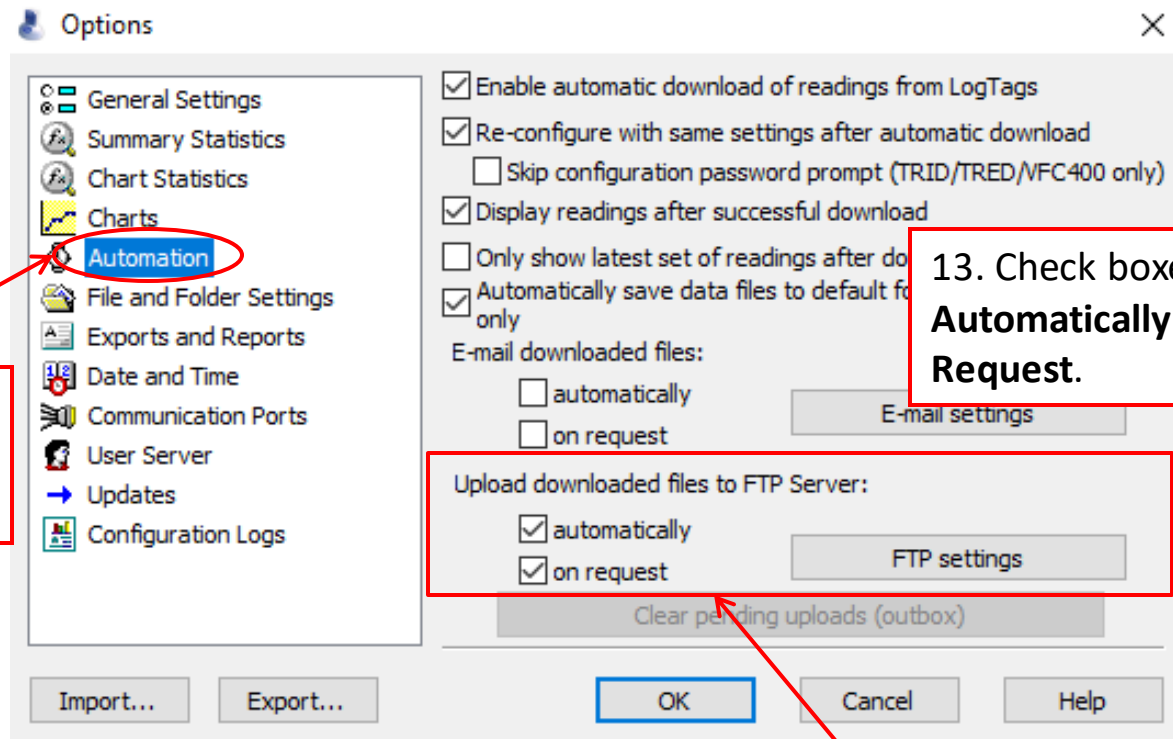


10. Select Automation

11. Check boxes 1, 2, 4 and 6.

It is VERY IMPORTANT to make sure that the second box ("Re-configure with same settings after automatic download") is checked.

# Options: Automation



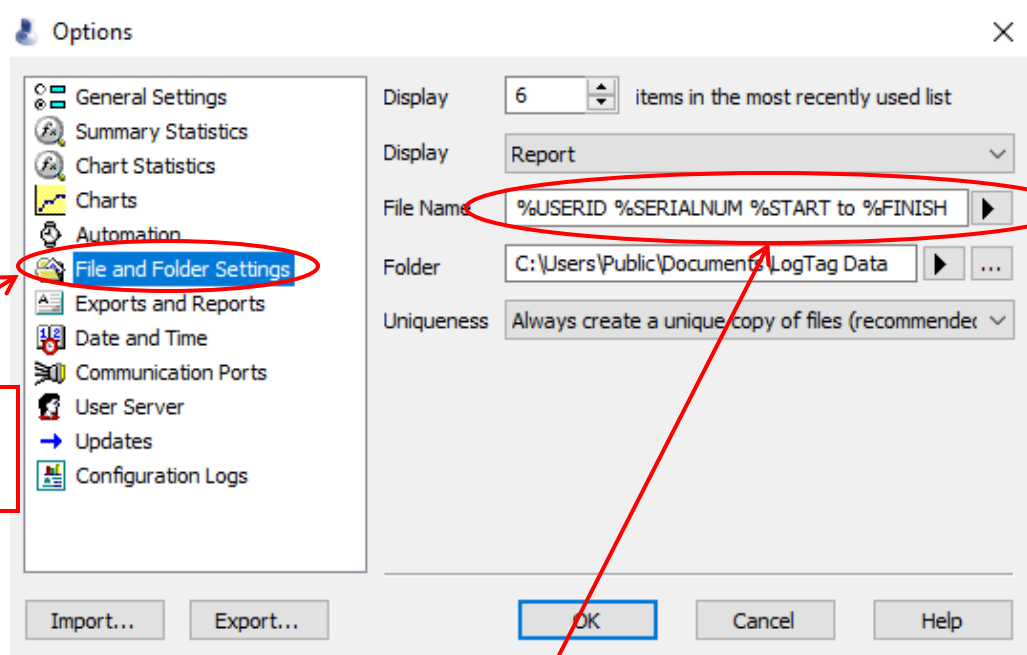
12. STAY in the Automation tab.

13. Check boxes **Automatically AND On Request.**

It is VERY IMPORTANT to make sure that the second box ("Re-configure with same settings after automatic download") is checked.



# Options: File and Folder Settings

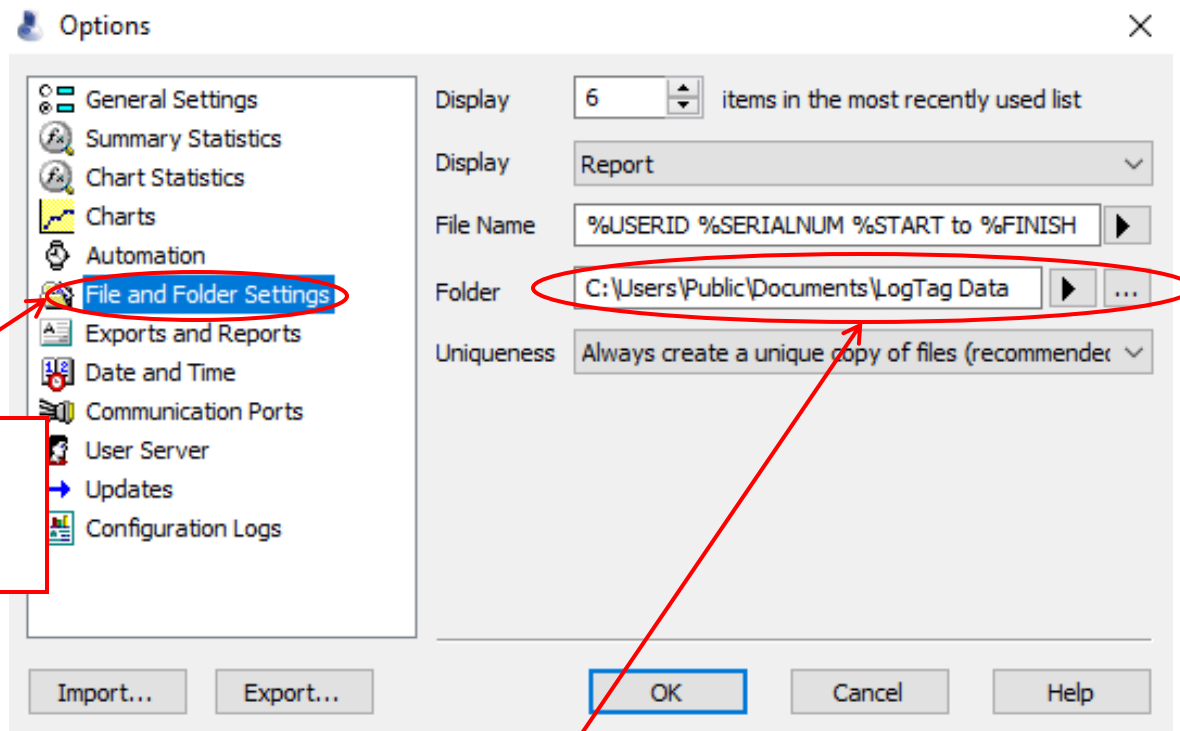


14. Select File and Folder Settings

15. Click the arrow next to "File." This will open the drop-down box on the right.
1. Click "**User ID.**" Put the cursor back in the heading box then hit the spacebar on your keyboard.
  2. Arrow. Click "**Serial Number.**" Then hit the spacebar.
  3. Arrow. "**Date/Time LogTag Started.**" Spacebar. Type the word "**TO.**" Spacebar.
  4. Arrow. "**Date/Time LogTag Finished.**"

Note: When you finish entering the information in the header it should look like the following:  
**%USERID %SERIALNUM %START to %FINISH**

# Options: File and Folder Settings (cont'd)



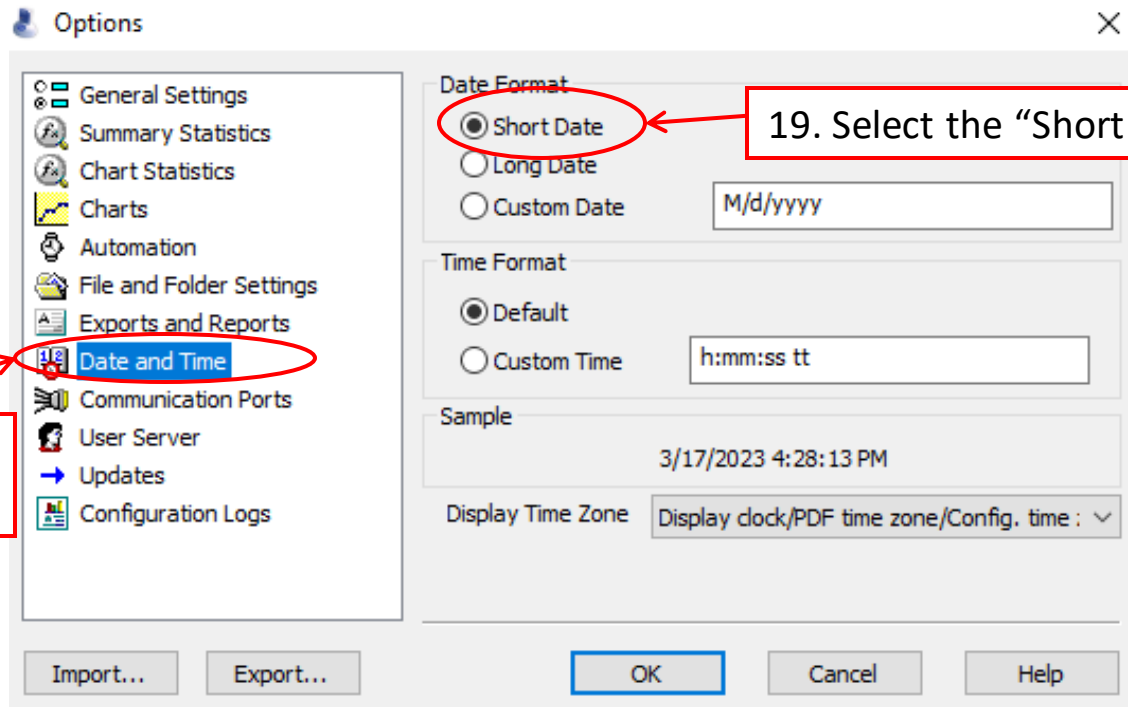
16. STAY on File and Folder Settings

17. Click the three dots next to Folder. This is where your data will automatically save. Choose which folder you want your data to automatically save to.

**Option 1.** If your practice has a shared drive, we recommend that you save the data there. If not, save it to a folder that more than 1 person can access.

**Option 2.** Save your data under “My documents.” Click on the folder called “My LogTag Data.”

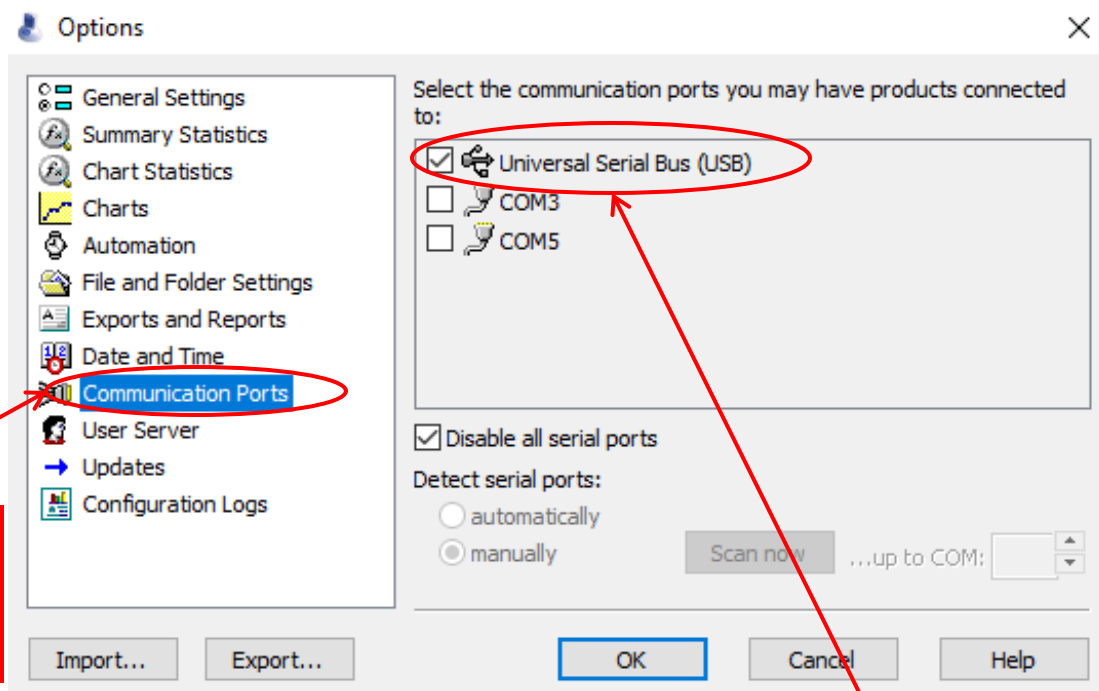
# Options: Date and Time



18. Select Date and Time

19. Select the "Short Date" radio button

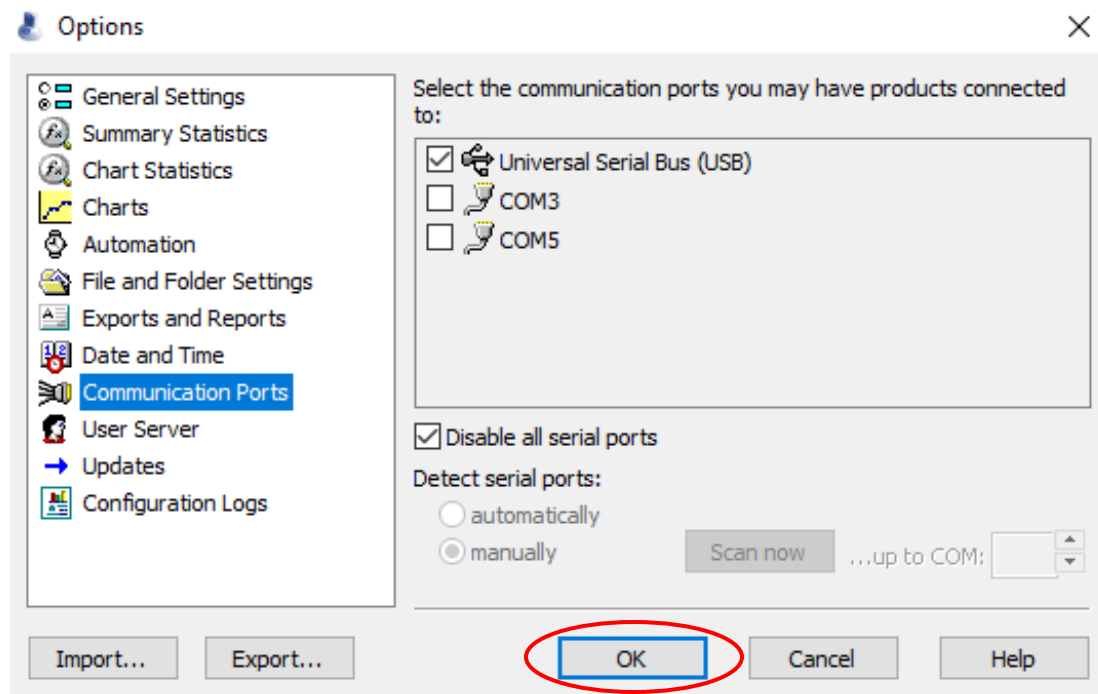
# Options: Complete



20. Select  
Communication  
Ports

21. Make sure **“Universal Serial Bus (USB)”**  
is checked

# Options: Complete



22. Click "OK"