



Setting up the Cloud

Control Solutions Vaccine Temperature
Monitoring Cloud (VTMC)

Control Solutions
Vaccine Temperature Monitoring Cloud

Table of Contents:

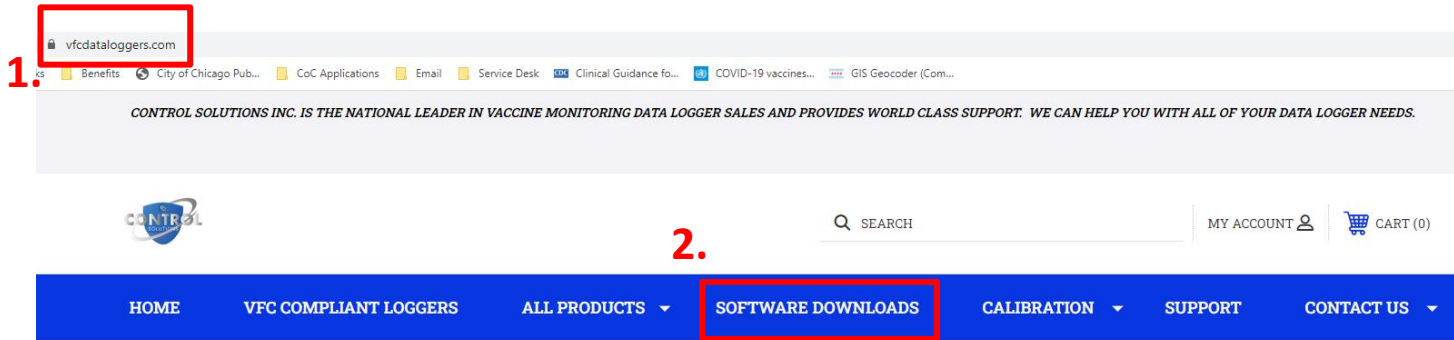
STEP 1: Download Updated “Control Solutions VTMC” pg. 3

STEP 2: Set up and Test Connection pg. 8

Additional Information: pg. 20

Step 1: Download Updated “Control Solutions VTMC”

1. Go to <https://www.vfcdataloggers.com>
2. Click on “Software Downloads”
3. Click the drop-down menu and select “VFC400-USB/VFC400-WIFI”



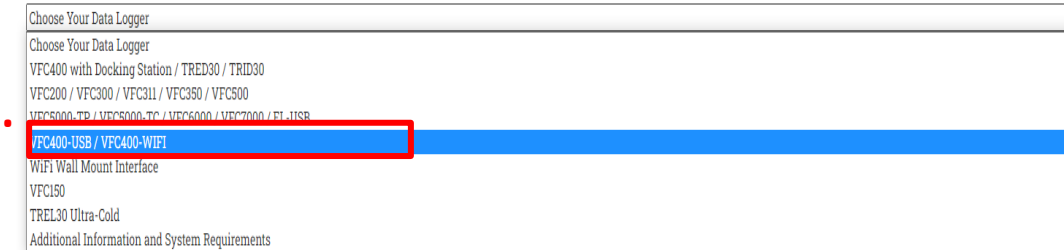
Home / Software Downloads

Software Downloads

PLEASE SELECT YOUR DATA LOGGER FROM THE LIST BELOW

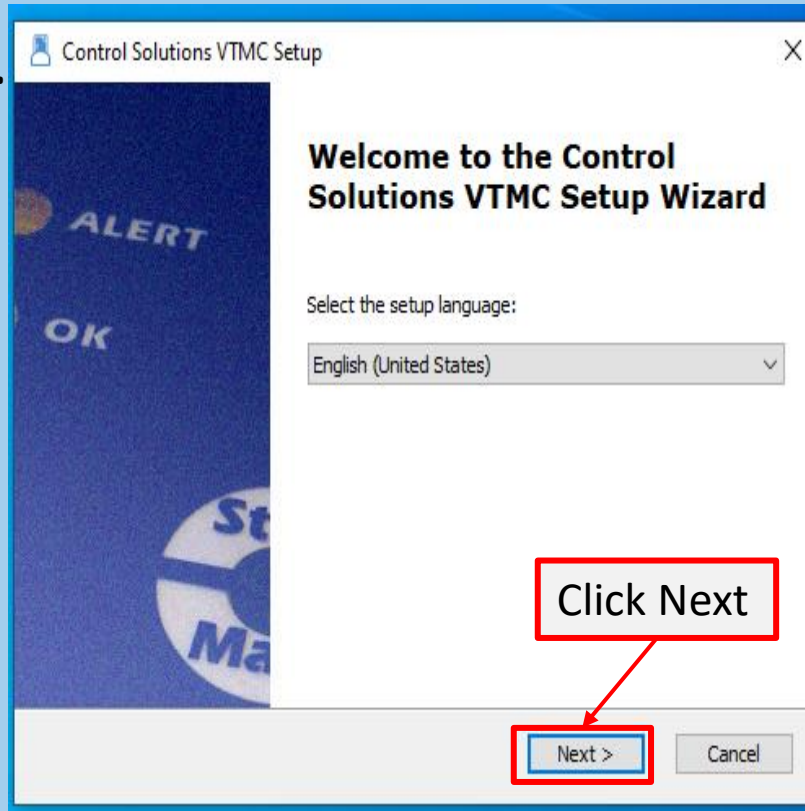
After selection your download will begin momentarily

NOTE: All software is Windows 7 or later only, and does not support Mac OS

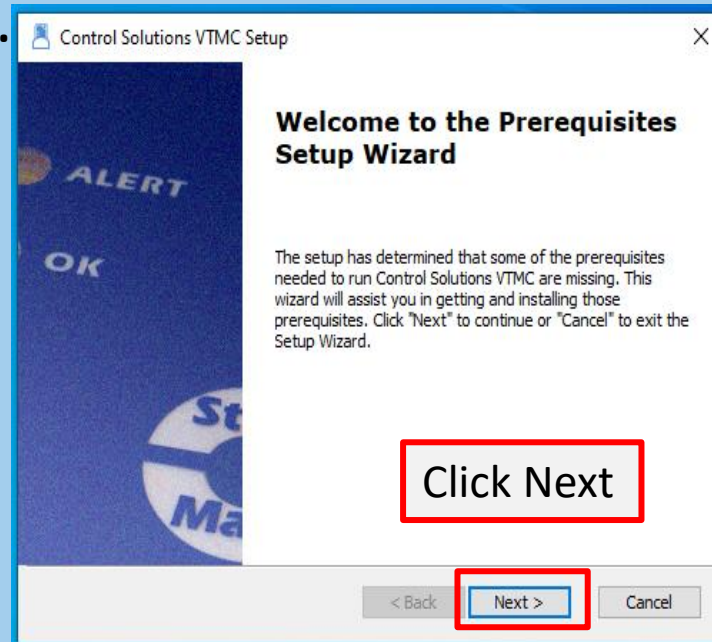


Step 1: Download & Installation (cont'd)

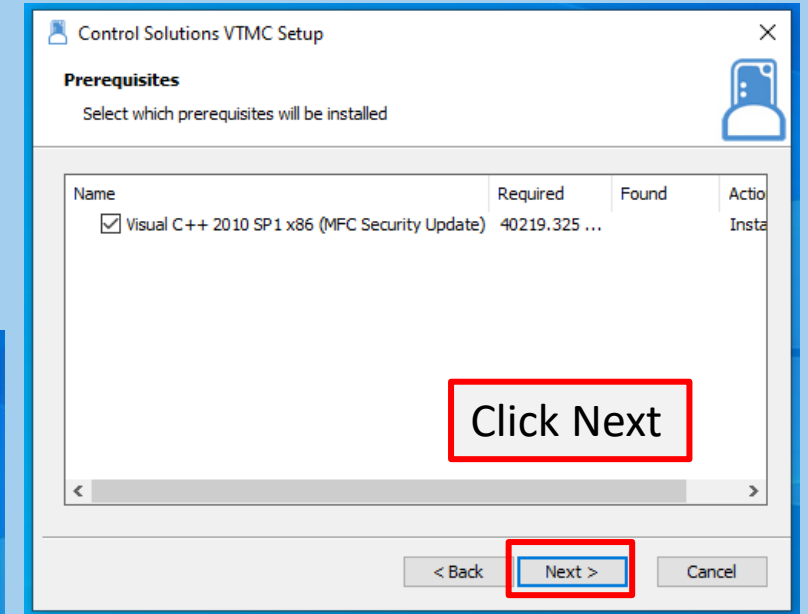
4.



5.

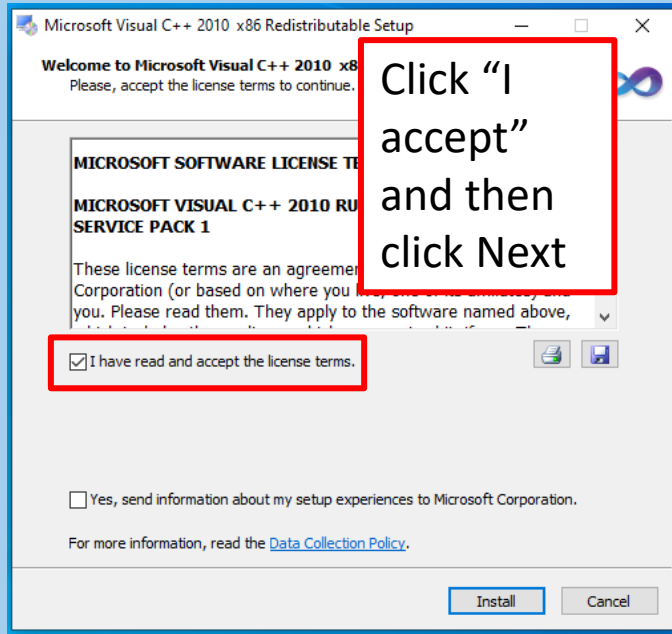


6.

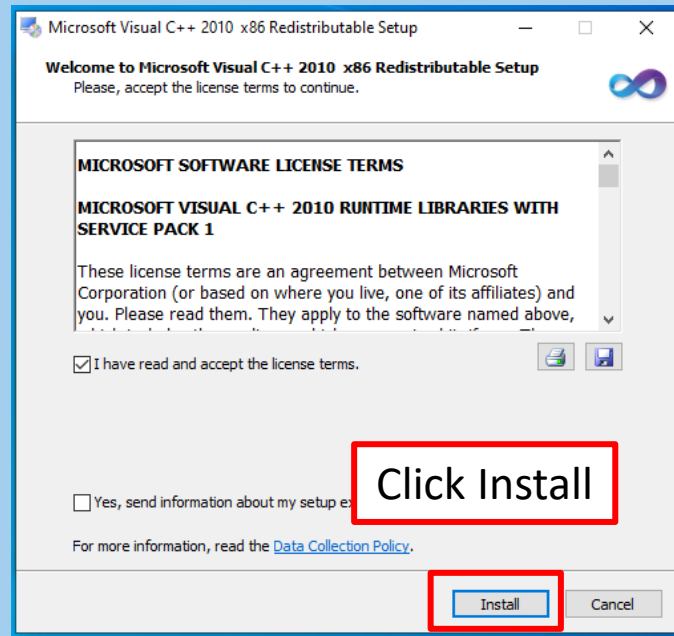


Step 1: Download & Installation (cont'd)

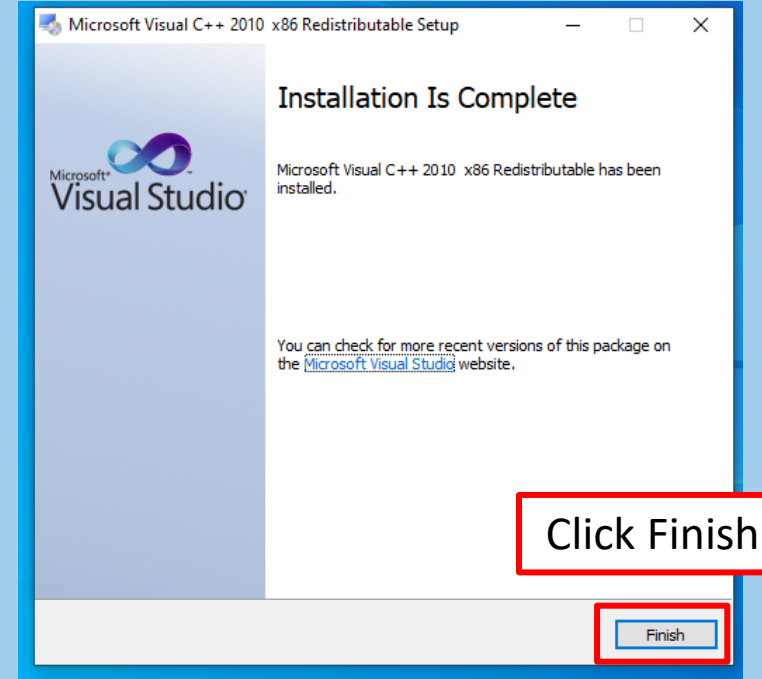
7.



8.

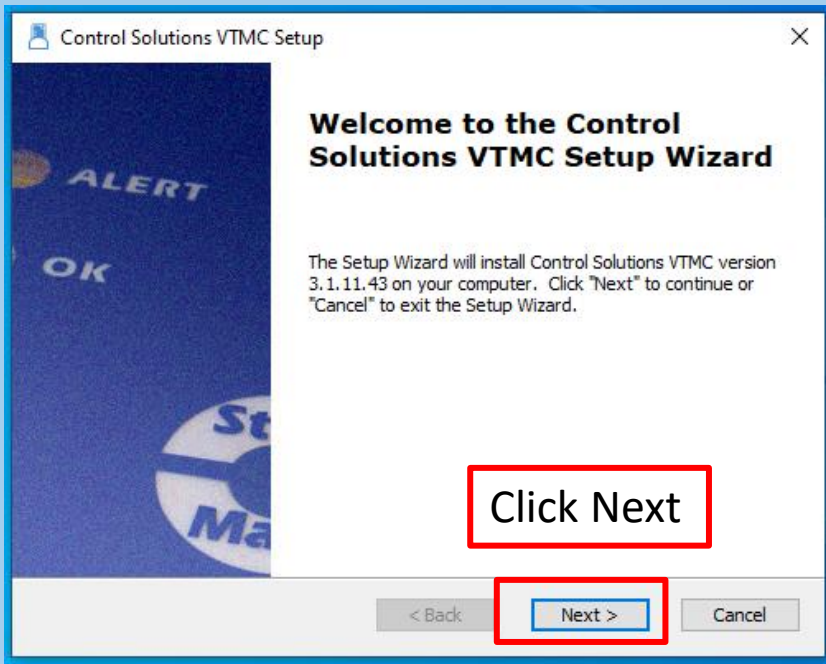


9.

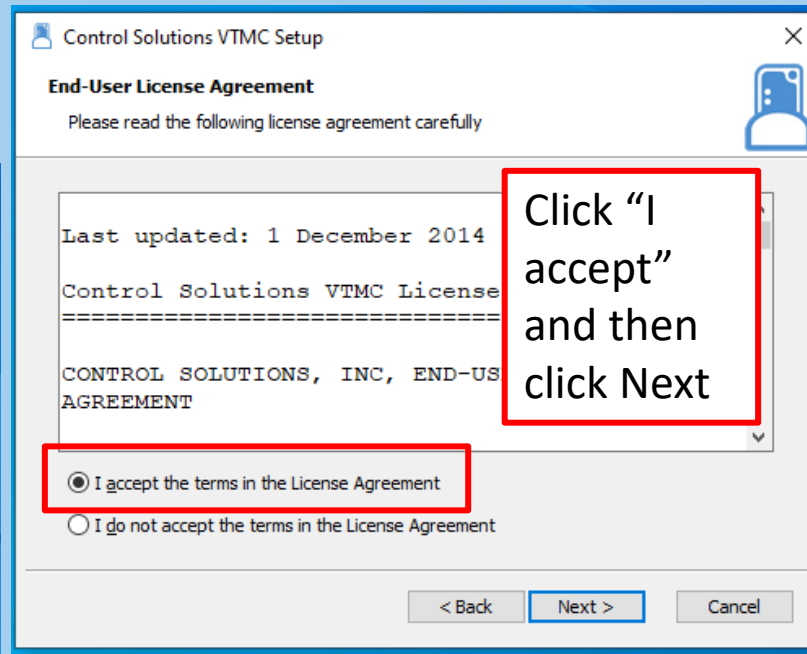


Step 1: Download & Installation (cont'd)

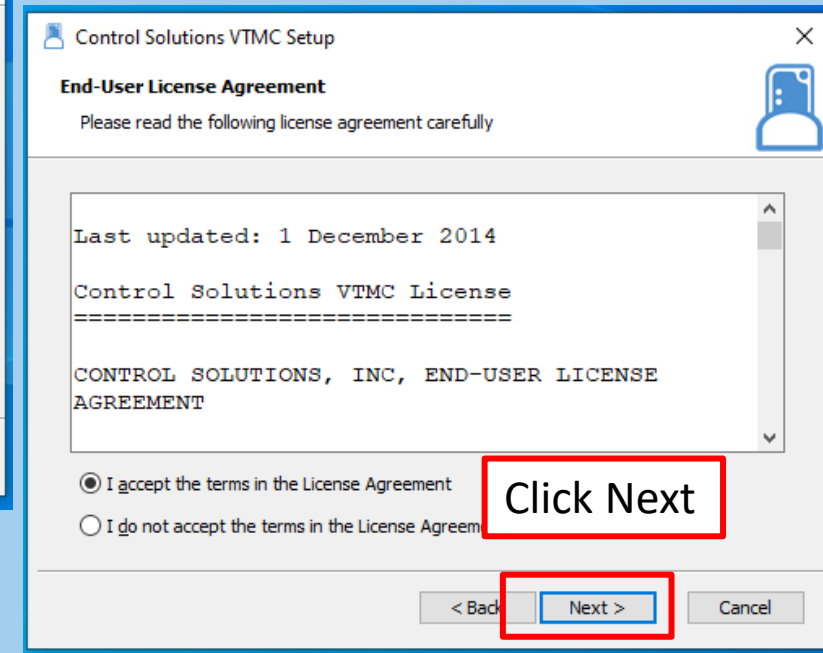
10.



11.

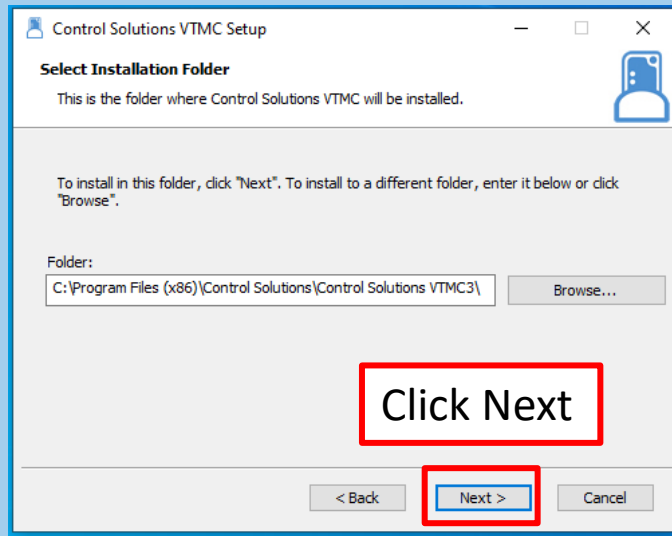


12.

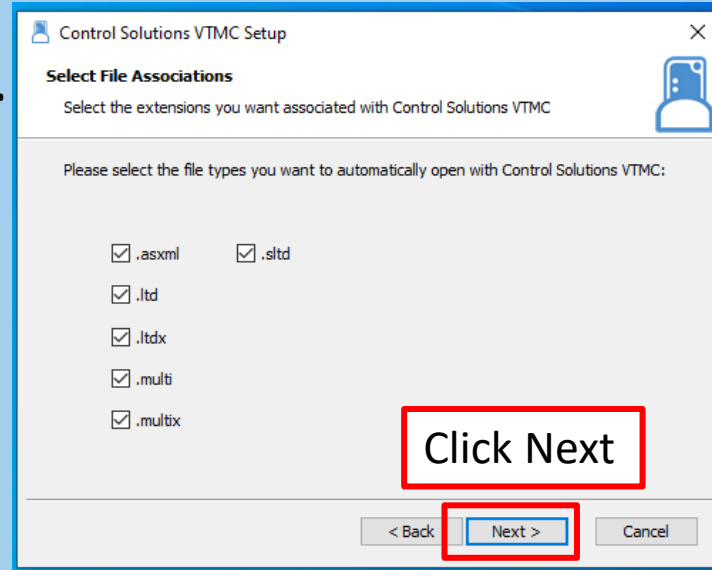


Step 1: Download & Installation (cont'd)

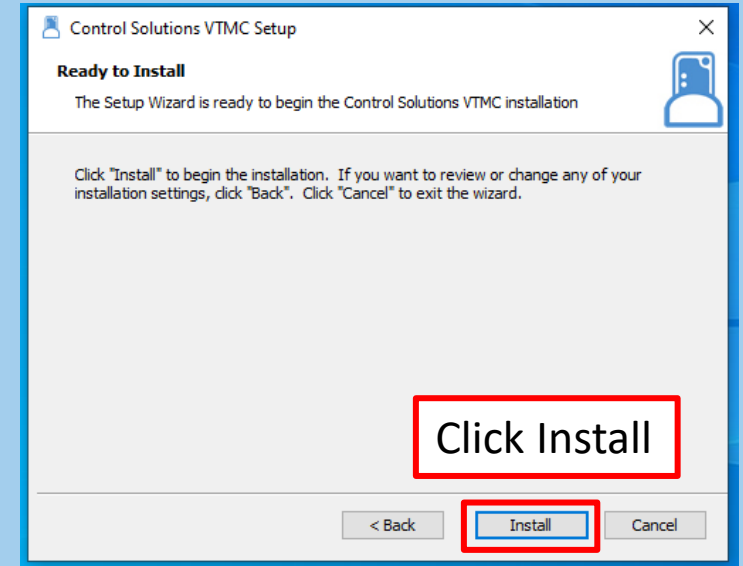
13.



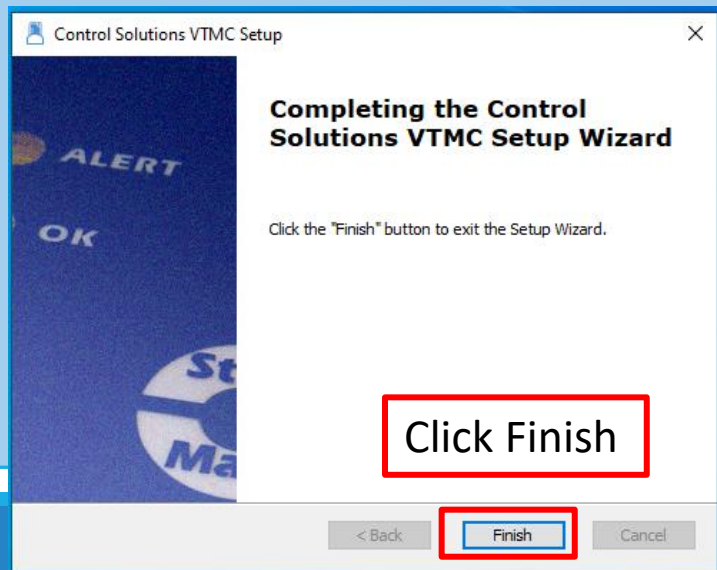
14.



15.



16.



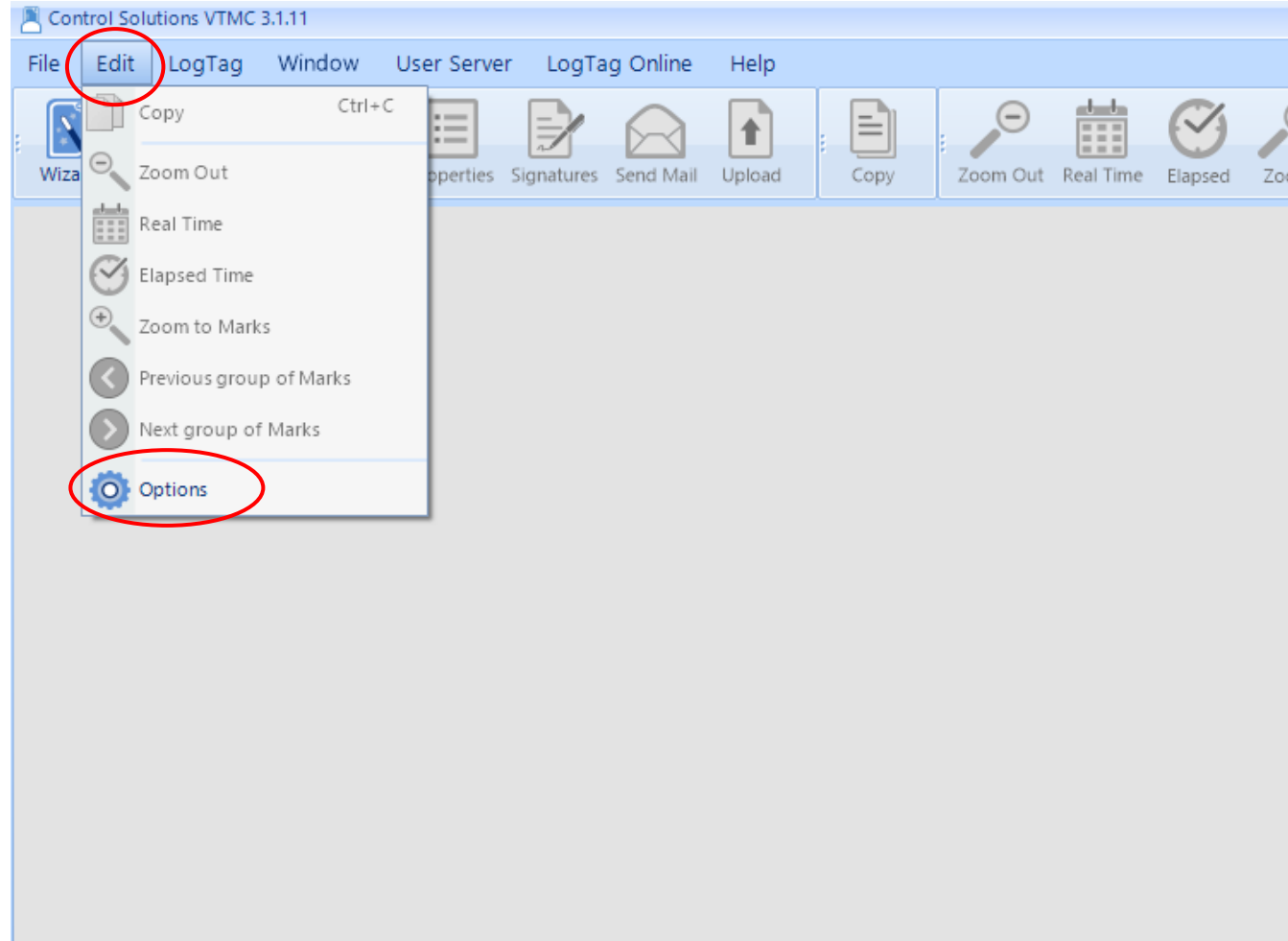
17.



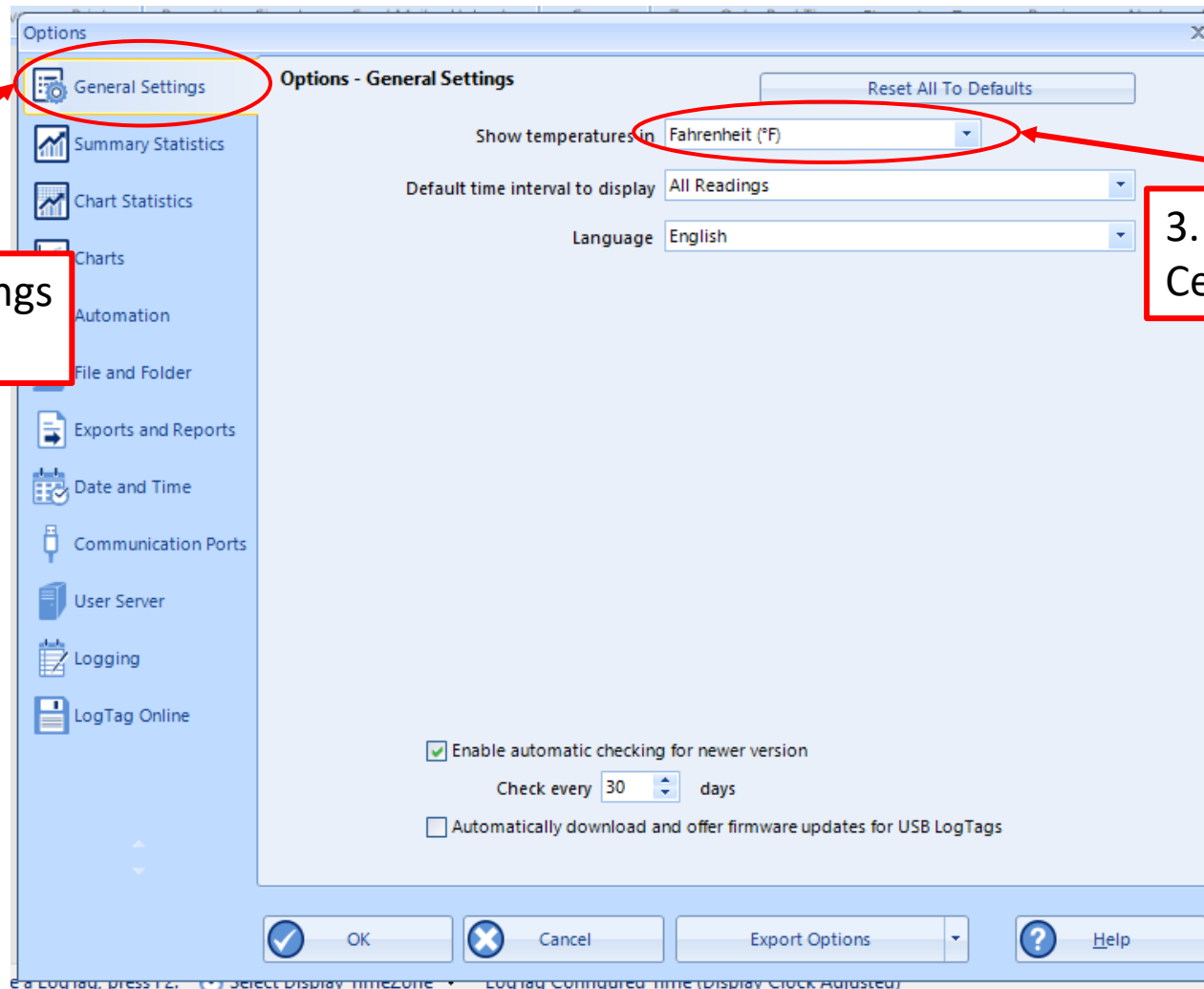
Download and installation complete!
This icon will appear on your desktop.

Step 2: Set up and Test the Connection

1. Click "Edit" and then "Options"



Step 2: Set up and Test the Connection (cont'd)



2. Select General Settings in the options list

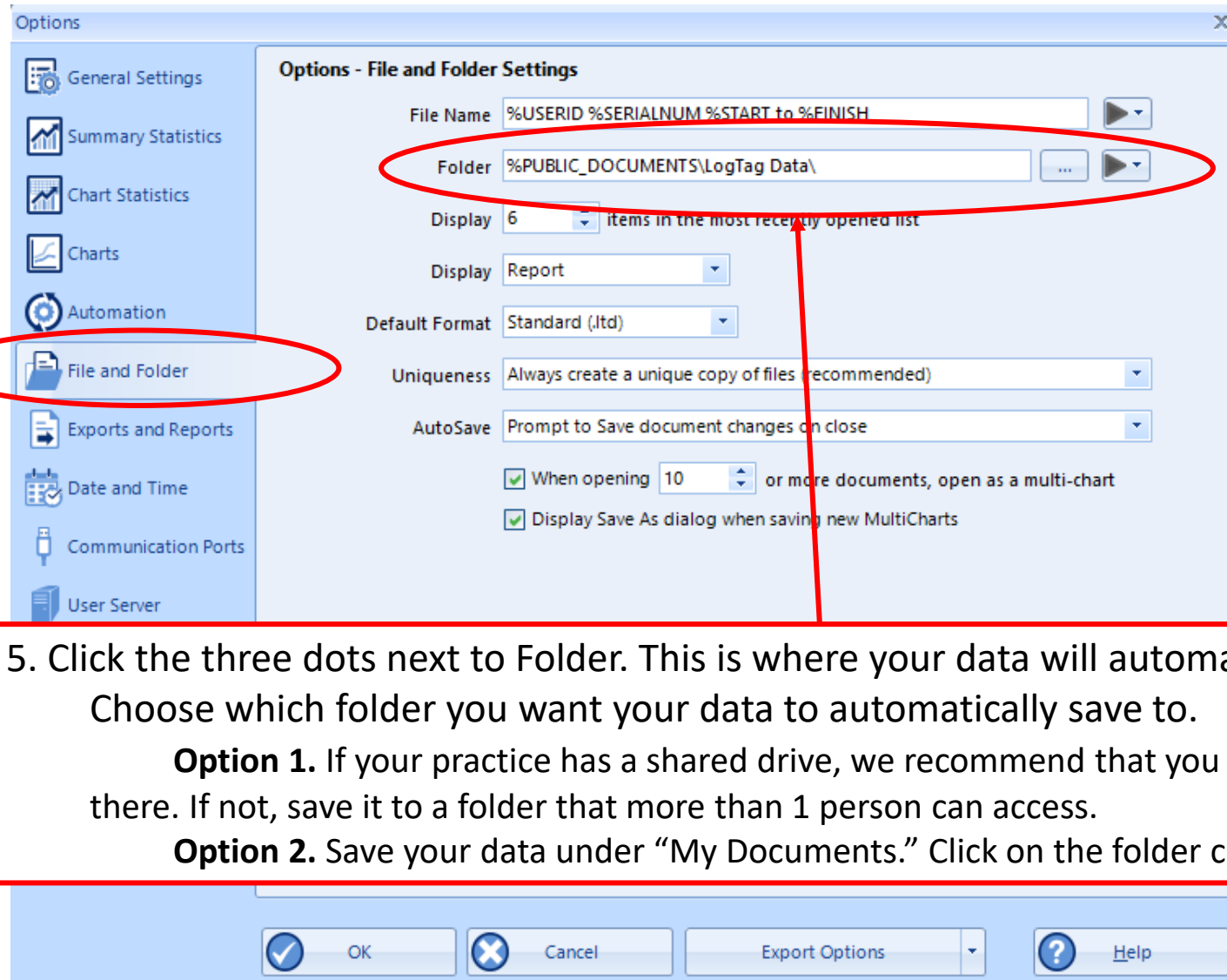
3. Select Fahrenheit or Celsius*

DO NOT click "OK" until all options in the option list are selected!

*Select this based on what your clinic records on the temperature logs

Step 2: Set up and Test the Connection (cont'd)

4. Click on File and Folder Settings

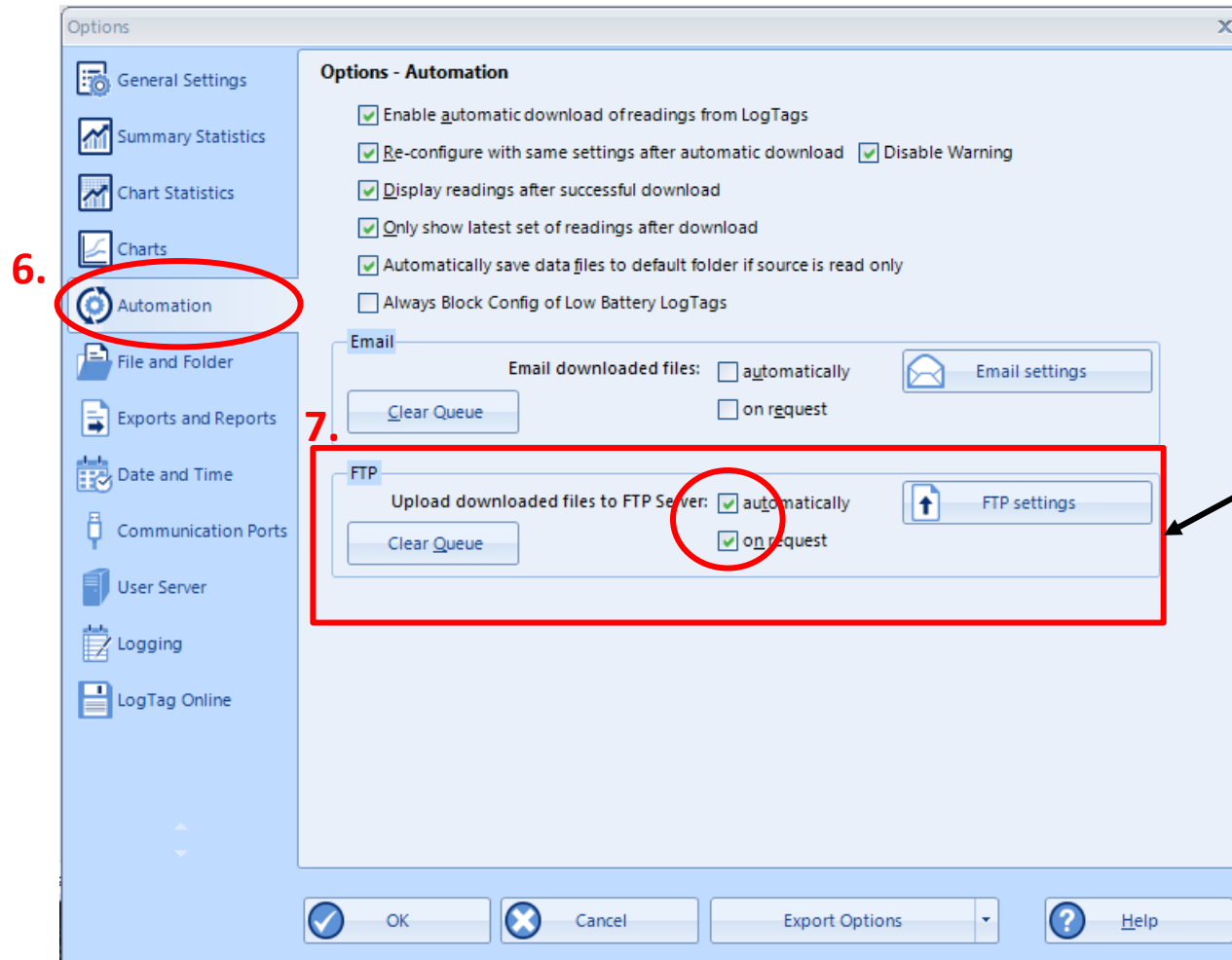


5. Click the three dots next to Folder. This is where your data will automatically save. Choose which folder you want your data to automatically save to.

Option 1. If your practice has a shared drive, we recommend that you save the data there. If not, save it to a folder that more than 1 person can access.

Option 2. Save your data under “My Documents.” Click on the folder called “MyLogTag Data.”

Step 2: Set up and Test the Connection (cont'd)



If this section is “grayed out,” press and hold **Shift+F11** to allow it to be edited

6. Click **Automation**
7. Ensure both “automatically” and “on request” are CHECKED** under the “FTP” section

**Note: These may already be checked when the updated software is downloaded. If this is the case, no action is needed

Step 2: Set up and Test the Connection (cont'd)

FTP Settings

FTP Server Settings

FTP Server: ftp.ameri-pharma.com

User Name: cs_user

Password: *****

Port: 21

Security protocol

none

SSL

TLS

SETP

Remote Folder: files

Create folder

8.

Firewall/Proxy Settings

Use Internet Explorer settings from Registry

Use custom settings

Upload file in the following formats

LogTag File (.ltd / .ltdx / .multix)

CSV (Comma delimited)

PDF (Portable Document Format)

HTML

Text (Macintosh)

Text (Tab delimited)

Advanced Settings

Log uploads, log file in folder

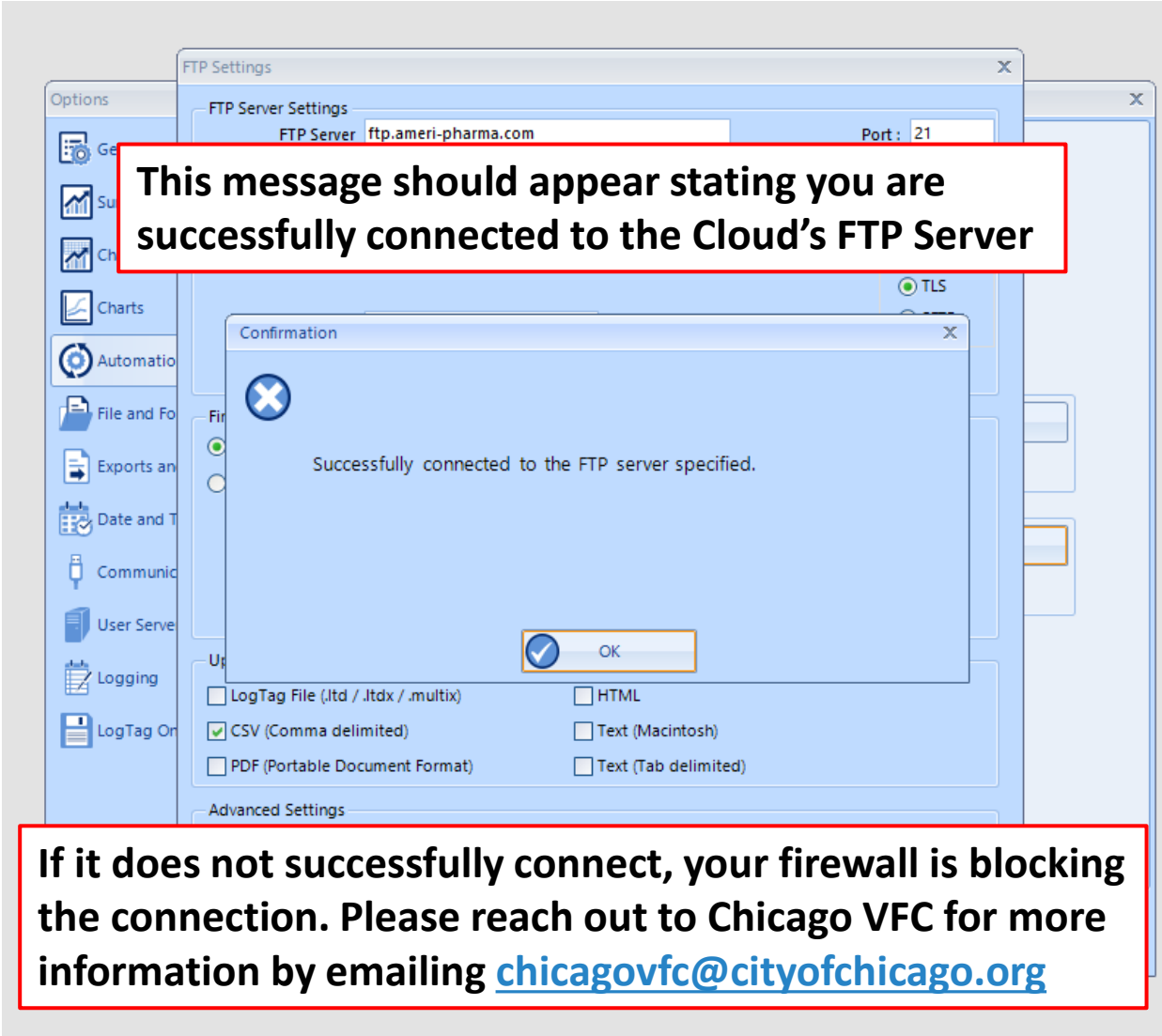
Log connection errors

Store pending uploads between sessions, automatically resume uploads on program startup

These 3 sections should have this information already populated. If not, reach out to chicagovfc@cityofchicago.org

8. Click "Test Connection" if all fields are already populated

Step 2: Set up and Test the Connection (cont'd)

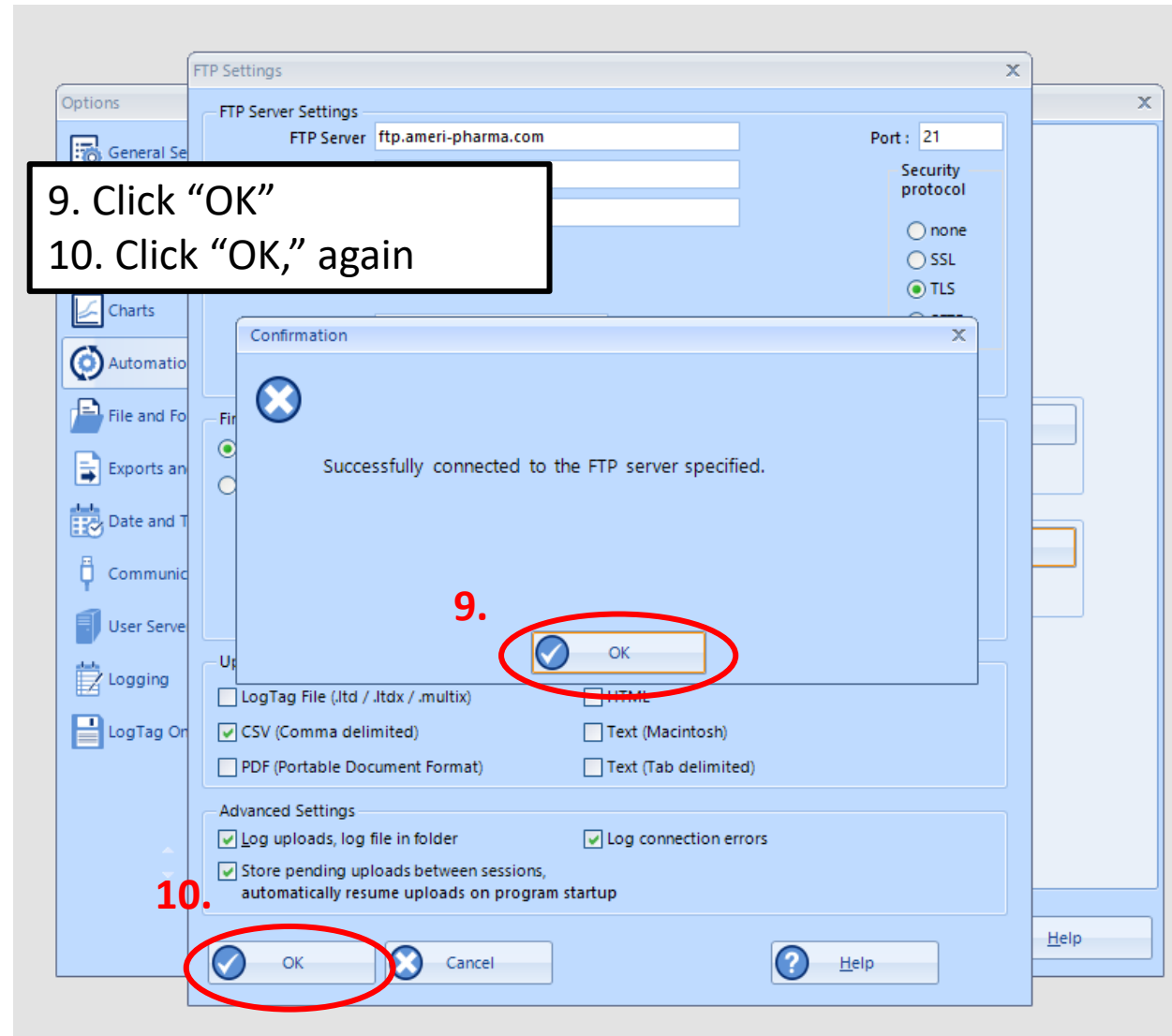


The screenshot shows a software interface with a sidebar on the left containing various icons and labels such as 'Options', 'Charts', 'Automatio', 'File and Fo', 'Exports an', 'Date and T', 'Communic', 'User Serve', 'Logging', and 'LogTag Or'. The main area displays 'FTP Settings' with fields for 'FTP Server' (ftp.ameri-pharma.com) and 'Port' (21). A 'Confirmation' dialog box is open in the center, featuring a blue 'X' icon and the text 'Successfully connected to the FTP server specified.' with an 'OK' button. Below the dialog, there are several checkboxes for file formats: 'LogTag File (.ltd / .ltdx / .multix)', 'HTML', 'CSV (Comma delimited)', 'Text (Macintosh)', 'PDF (Portable Document Format)', and 'Text (Tab delimited)'. The 'CSV (Comma delimited)' checkbox is checked.

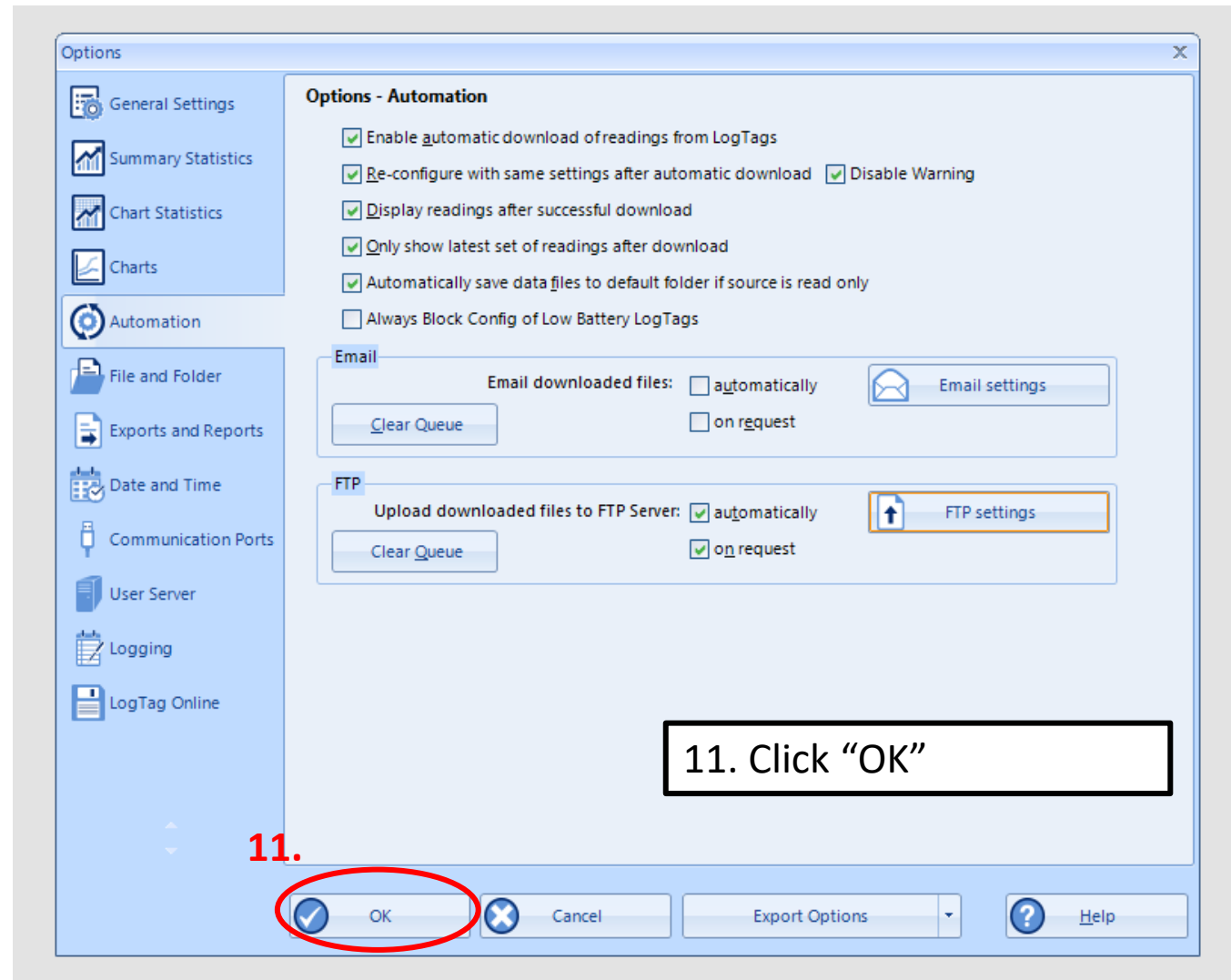
This message should appear stating you are successfully connected to the Cloud's FTP Server

If it does not successfully connect, your firewall is blocking the connection. Please reach out to Chicago VFC for more information by emailing chicagovfc@cityofchicago.org

Step 2: Set up and Test the Connection (cont'd)



Step 2: Set up and Test the Connection (cont'd)



Step 2: Set up and Test the Connection (cont'd)

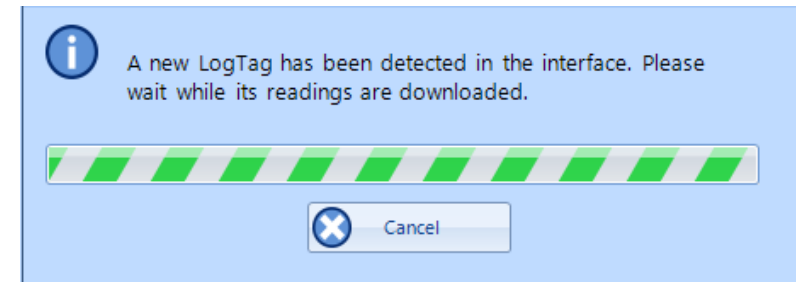
Download the DDL to test the connection:

12. Connect the USB Interface cradle to the computer:
(If it is not already connected)

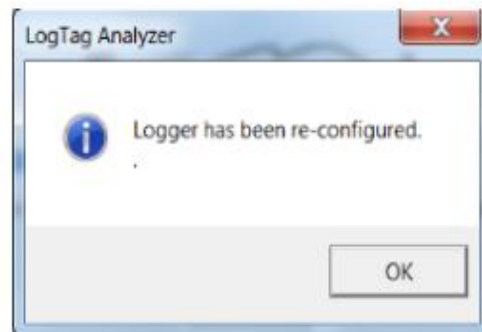


13. Insert recorder into cradle:

Data is automatically downloaded and saved. You will see this animation:



14. Click OK when you are notified that the recorder has been reconfigured:



Step 2: Set up and Test the Connection (cont'd)

15. Your data report should appear

16. To upload your data report, click on the upload icon



Control Solutions VTM 3.1.11

File Edit LogTag Window User Server LogTag Online Help

Wizard Open Save Print Properties Signatures Send Mail **16.** Upload Copy Zoom Out Real Time Elapsed Zoom Previous Next Average Multi Single Options

Frezer Monitoring Example.Hdx

Receiver Notes

Control Solutions

Recorder has been Downloaded 10/20/2003 1:38:17 PM

Note: All Date-Time values are in UTC -10:00

Alarm Status		Recorder Info	
Lower	OK	Serial # 0004310317	Model: TRIX-8
Upper	Fail	Battery: OK	Trip #: 5
		Description: My Cold Room	

Recorder Configuration

Start type: Push button start	Temperature alarms
Start delay: None	Lower: -17.8 °C after 2 Consecutive
Interval: 30 Seconds	Upper: -12.3 °C after 2 Consecutive
Alert indicator: Enabled lower & upper	
OK indicator: Enabled	

Recorded Data

Temperature statistics	
First reading: 10/1/2003 11:05:21 AM	Lowest: -14.6 °C
Last reading: 10/2/2003 1:39:21 PM	@ 10/2/2003 7:45:51 AM
Elapsed time: 1 Day 2 Hours 34 Minutes	
30 Seconds	
Total readings: 3189	Highest: 36.2 °C
First evaluated: 10/1/2003 11:05:21 AM	@ 10/1/2003 4:12:51 PM
Last evaluated: 10/2/2003 1:39:21 PM	Average reading: -8.8 °C
Evaluated Time: 1 Day 2 Hours 34 Minutes	Standard Deviation: 11.0 °C(S)
30 Seconds	
Evaluated Readings: 3189	MKT(ΔH 83.144): 3.3 °C

Lower Alarm	Upper Alarm
Triggered: (none)	Triggered: 10/1/2003 12:01:21 PM
Time below/equal: (none)	Time above/equal: 5 Hours 18 Minutes
Occurrences: 0	Occurrences: 4
°C - Minutes below: 0.00	°C - Minutes above: 7,268.30

Temp °C

Report Chart Data Summary

All Readings

For Help, press F1. To use a LogTag, press F2. Select Display TimeZone LogTag Configured Time (Display Clock Adjusted) Pending Emails: 0 Uploads: 0

Step 2: Set up and Test the Connection (cont'd)

17. Uploads will go up by "1" when uploading at the bottom of the screen

18. When uploads go back down to "0", your data is successfully uploaded!

The screenshot displays the 'Control Solutions VTM 3.1.11' software interface for 'Freezer Monitoring Example.Rtd'. The main window shows a 'Recorder Status' section with 'Alarm Status' (Lower: OK, Upper: Fail) and 'Recorder Info' (Serial #: 0004310317, Model: TRIX-8, Battery: OK, Trip #: 5). Below this is 'Recorder Configuration' and 'Recorded Data' including temperature statistics (Lowest: -14.6 °C, Highest: 36.2 °C, Average: -8.8 °C). At the bottom, there are 'Lower Alarm' and 'Upper Alarm' status boxes. A temperature graph is visible at the bottom left.

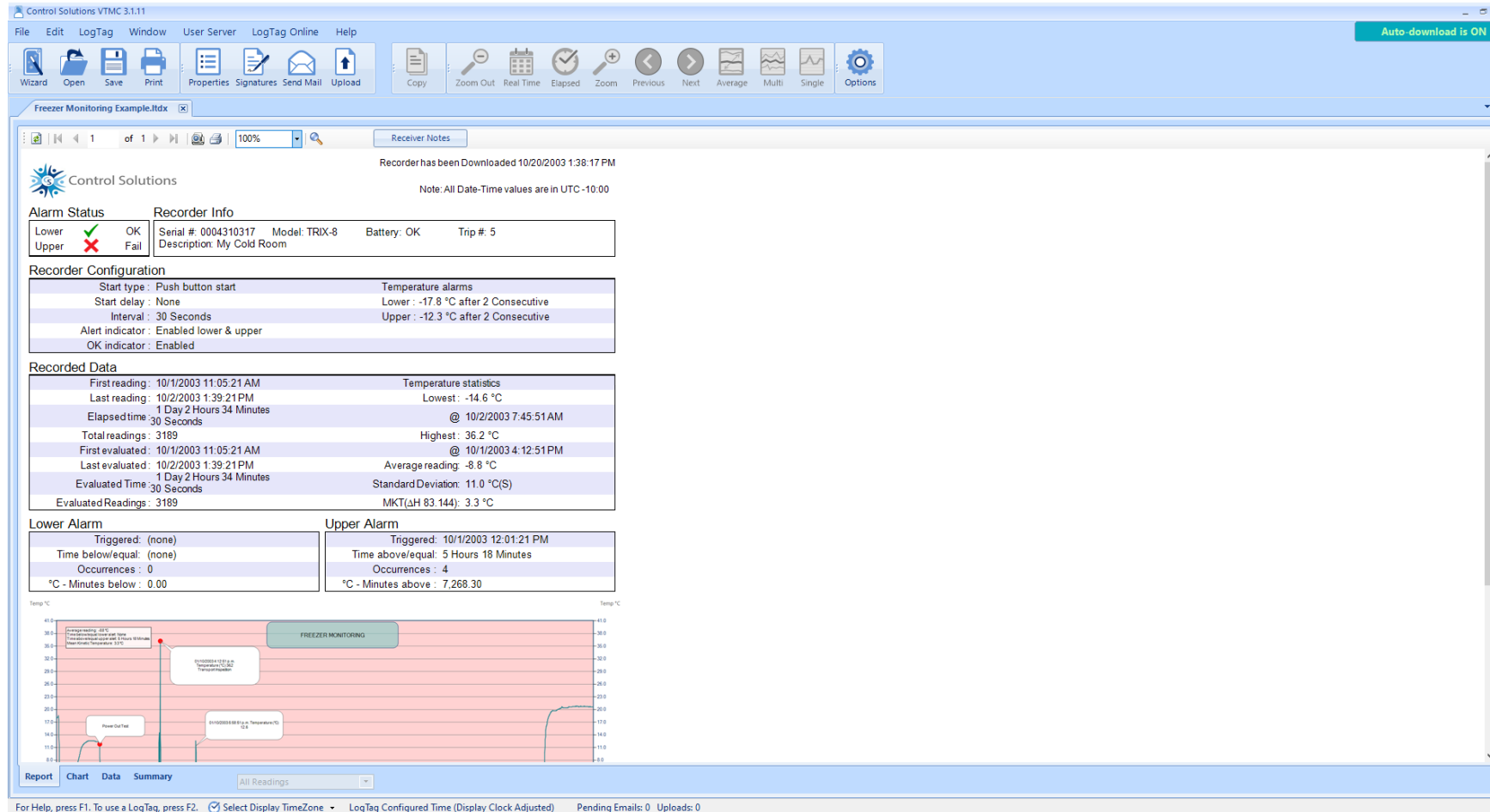
Two status bars are highlighted with red circles and callouts:

- 17.** A status bar at the bottom center shows 'LogTag Configured Time (Display Clock Adjusted)' and 'Pending Emails: 0 Uploads: 1'. A red circle highlights the 'Uploads: 1' portion.
- 18.** A status bar at the bottom right shows 'Pending Emails: 0 Uploads: 0'. A red circle highlights the 'Uploads: 0' portion.

A text box on the right side of the screenshot states: 'Hover over the status bar to see its current progress'. Below it, a tooltip shows 'Pending Email file SMTP: Initializing Upload file FTP: Connecting'.

Step 2: Set up and Test the Connection (cont'd)

Congratulations! Your DDL data has been uploaded to the Cloud!!



Additional Information

- You can view your uploaded data by visiting <https://vtmc.ameri-pharma.com/>
 - Use your email address that you submitted on the form to log in
 - First-time password is based on your name:
 - Name: Cheese Cake
 - Password: CCake123
- The files are uploaded based on DDL serial number
 - Found on the back of the data logger:
 - S/N example = 1860917494
- **If this changes** (new DDL is purchased, primary DDL is out for recalibration, etc.) **please email chicagovfc@cityofchicago.org with the replacement serial number...otherwise, the data will not go to the Cloud**

