



Control Solutions
Vaccine Temperature Monitoring Cloud

LogTag Settings

CONTROL SOLUTIONS

VACCINE TEMPERATURE MONITORING CLOUD (VTMC)

Has your data logger previously been recording temperatures?

YES: Sync the data logger and extract all the temperatures on the device (pg. 3).

NO: If you have a new device, you can proceed to the device configuration section (pg. 4).

The Download

Download the DDL to test the connection:

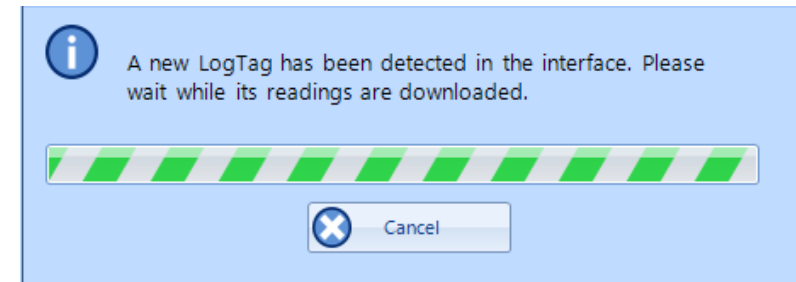
1. Connect the USB Interface cradle to the computer:
(If it is not already connected)



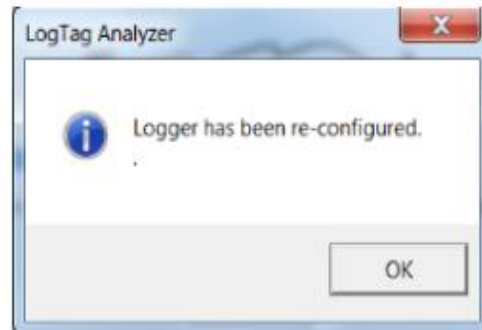
2. Insert recorder into cradle:

Data is automatically downloaded and saved.

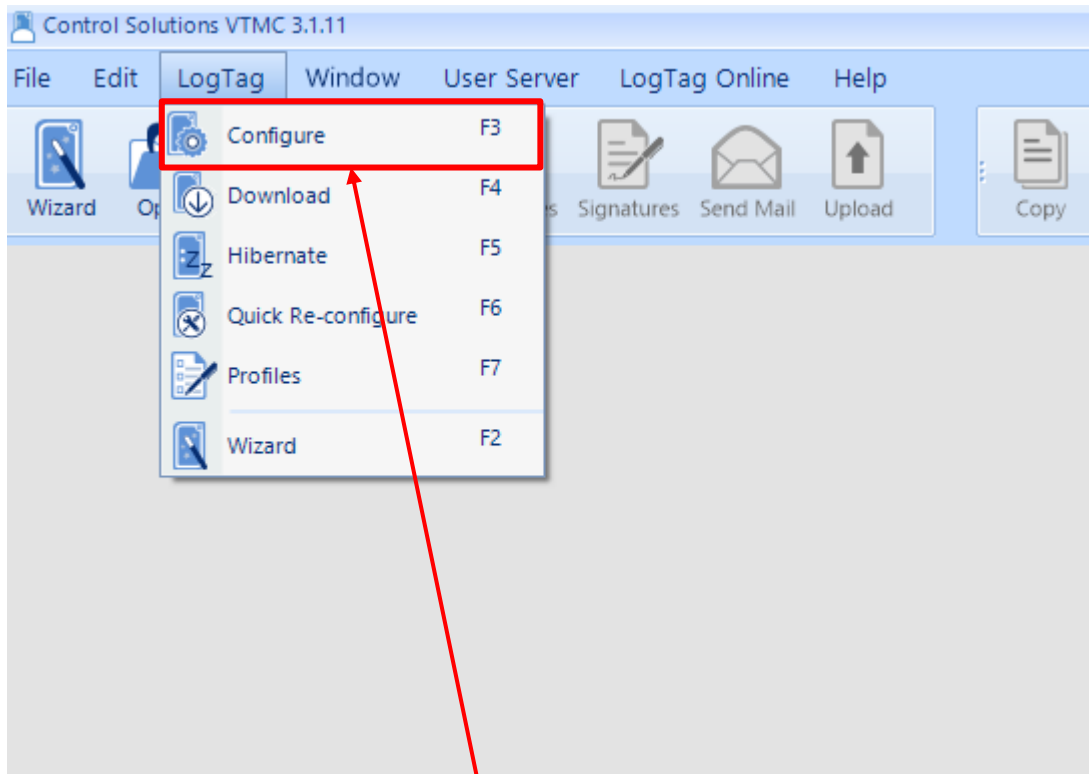
You will see this animation:



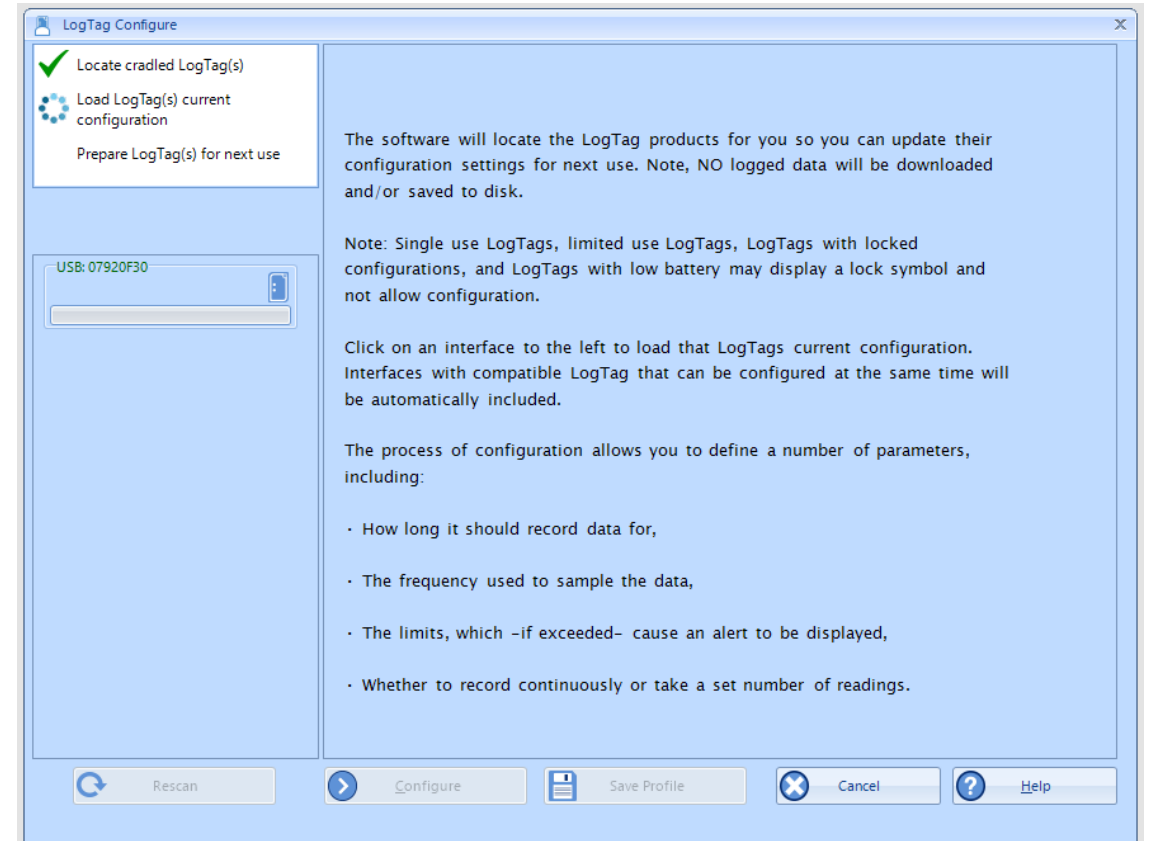
3. Click OK when you are notified that the recorder has been reconfigured:



Device Configuration (cont'd)



1. Select “LogTag”
and “Configure”



2. Wait while the computer program locates the
LogTag

LogTag Configure: Refrigerator Logger

3. Enter your **VFC PIN #**, **clinic name**, and **Refrigerator** in the “User Information” field. (If you have more than one refrigerator, label them 1 and 2 or A and B)

4a. Enter **15 minutes** in the “Record a reading every” field. “Readings recorded” will automatically change to span at least 165 days.

4b. Make sure **0 minutes** is in the space after “Begin recording after a delay of”

Configure LogTag(s) TRID/TRED & VFC400-1/2/3 Settings from SN:7862900752

User Information
Description: C05000 WSCDC Fridge LogTag Battery: OK
Password: Configure requires a password
 Download requires a password

Logging Parameters
Push button start Enable pre-start logging

Record readings continuously, overwrite oldest when memory full
 Record readings go that:
Readings recorded will span at least 165 Days
Number of readings to record 15905 maximum is 15905
Record a reading every 15 Minutes
Begin recording after a delay of 0 Minutes

Audible Alarm (if available) Logger display temperature unit: Fahrenheit

Upper Alarm
 Trigger alarm when readings above/equal 46.0 °F
After 4 Consecutive violation readings (1 Hour)

Lower Alarm
 Trigger alarm when readings below/equal 36.0 °F
After 2 Accumulative violation readings (None)

Alarm Settings Advanced Settings Additional Features

Rescan Configure Save Profile Cancel Help

Retain Description/Password

“Readings recorded” will automatically change to span at least 165 days.
**Note: This number is for the VFC400 DDLs (red DDLs).

LogTag Configure: Refrigerator Logger

5. Check “Trigger alarm when readings above/equal” and enter **46** if you record in Fahrenheit or **8** if you record in Celsius.

6. Check ‘After” and enter “4 consecutive”

7. Check “Trigger alarm when readings below/equal” and enter **36** if you record in Fahrenheit or **8** if you record in Celsius. Leave the “after” box unchecked.

LogTag Configure

Configure LogTag(s) TRID/TRED & VFC400-1 / 2 / 3 Settings from SN:7862900752

User Information
Description: C05000 WSCDC Fridge **LogTag Battery: OK**
Password: Configure requires a password
 Download requires a password

Logging Parameters
Push button start Enable pre-start logging

Record readings continuously, overwrite oldest when memory full
 Record readings go that:
Readings recorded will span at least 165 Days
Number of readings to record 15905 maximum is 15905
Record a reading every 15 Minutes
Begin recording after a delay of 0 Minutes

Audible Alarm (if available) Logger display temperature unit: Fahrenheit

Upper Alarm
 Trigger alarm when readings above/equal 46.0 °F
After 4 Consecutive violation readings (1 Hour)

Lower Alarm
 Trigger alarm when readings below/equal 36.0 °F
After 2 Accumulative violation readings (None)

Alarm Settings Advanced Settings Additional Features

Rescan Configure Save Profile Cancel Help

Retain Description/Password

LogTag Configure: Refrigerator Logger

LogTag Configure

Configure LogTag(s) TRID/TRED & VFC400-1/2/3 Settings from SN:7862900752

✓ Locate cradled LogTag(s)
✓ Load LogTag(s) current configuration
Prepare LogTag(s) for next use

Click on LogTag below to select model(s) to be configured/show LogTag's current configuration

USB: 07920F30
VFC400-3 SN:7862900752

User Information
Description: C05000 WSCDC Fridge **LogTag Battery: OK**
Password: Configure requires a password
 Download requires a password

Logging Parameters
Push button start Enable pre-start logging

Record readings continuously, overwrite oldest when memory full
 Record readings so that:
Readings recorded will span at least 165 Days
Number of readings to record 15905 maximum is 15905
Record a reading every 15 Minutes
Begin recording after a delay of 0 Minutes

Audible Alarm (if available) **Logger display temperature unit: Fahrenheit**

Upper Alarm
 Trigger alarm when readings above/equal 46.0 °F
After 4 Consecutive violation readings (1 Hour)

Lower Alarm
 Trigger alarm when readings below/equal
After 2 Accumulative

Alarm Settings **Advanced Settings** Additional Features

Rescan Configure Save Profile Cancel Help

Retain Description/Password

8. Choose Fahrenheit or Celsius

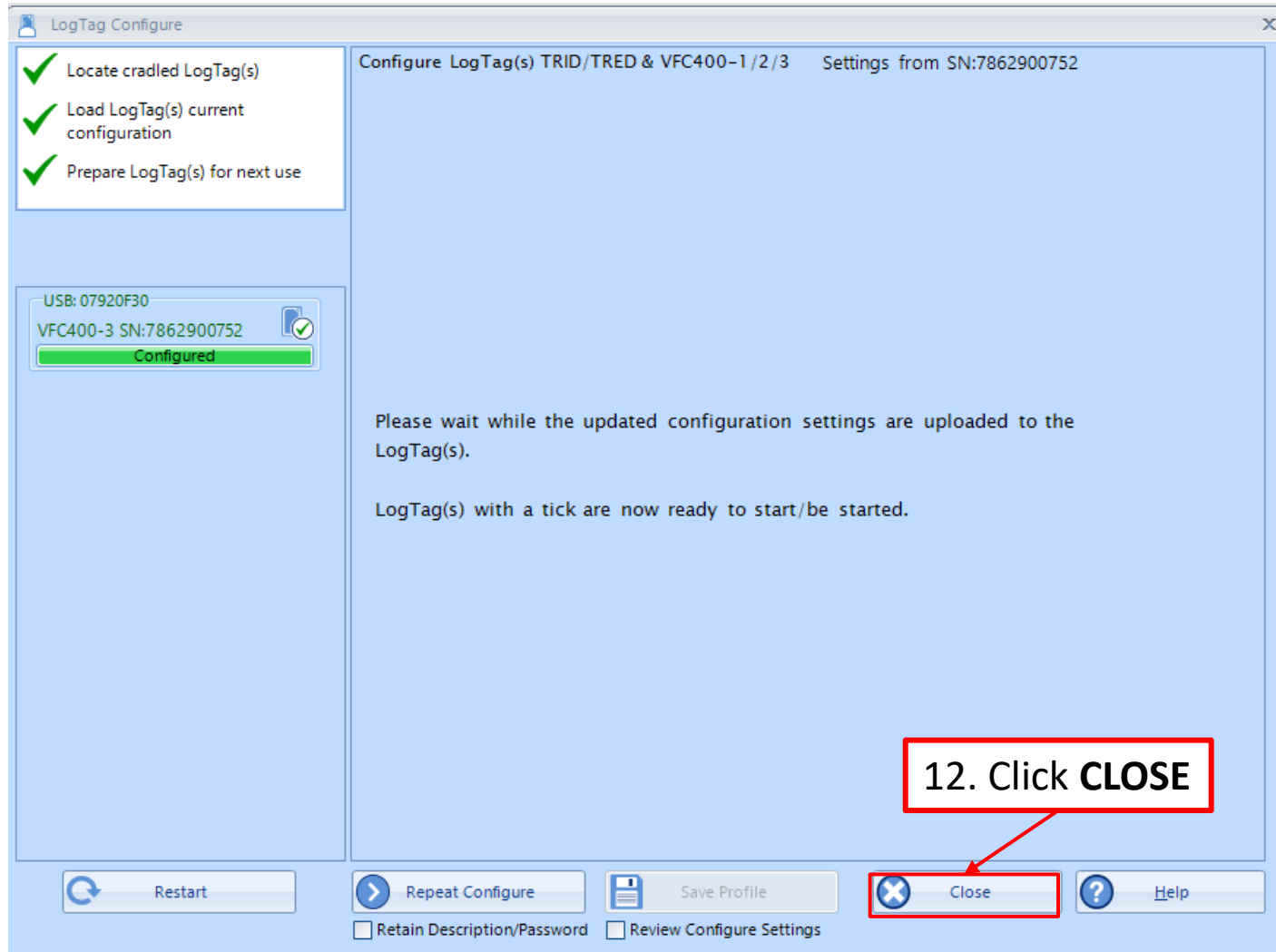
9. Click "Advanced Options"

LogTag Configure: Refrigerator Logger

10. Make sure the 2nd, 5th, and 7th boxes are checked.

11. Click **CONFIGURE**

LogTag Configure: Refrigerator Logger



12. Click **CLOSE**

Congratulations!

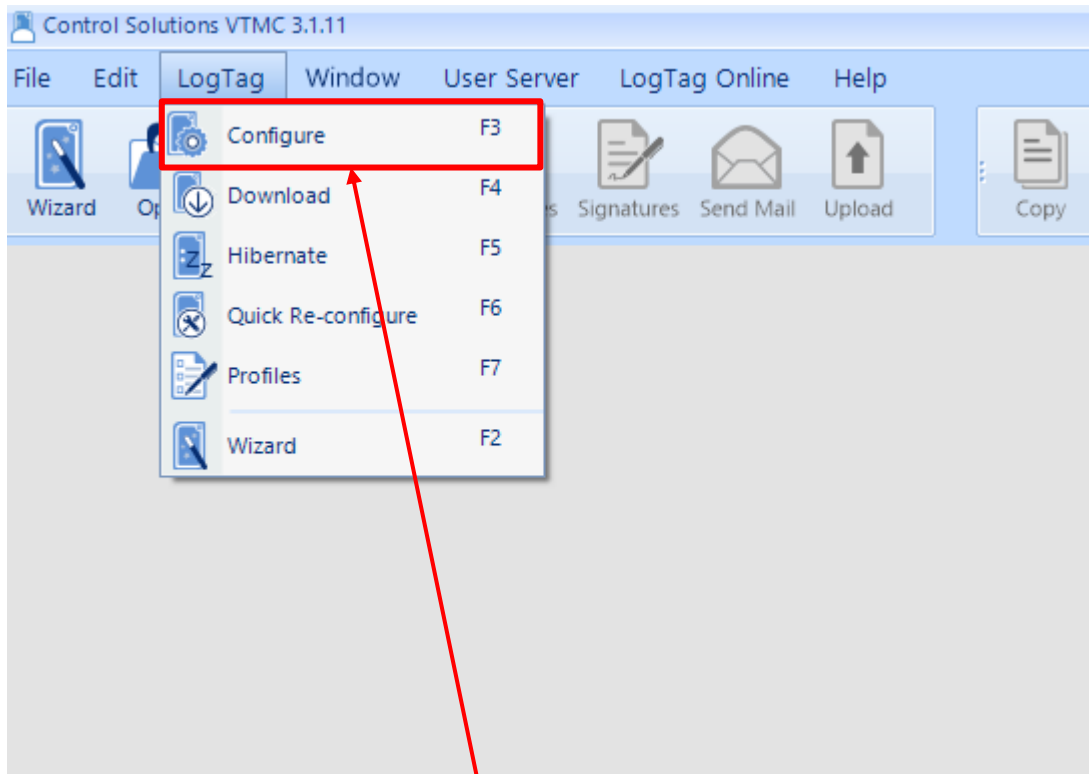
You are done configuring your refrigerator logger.

Important: Label your loggers!

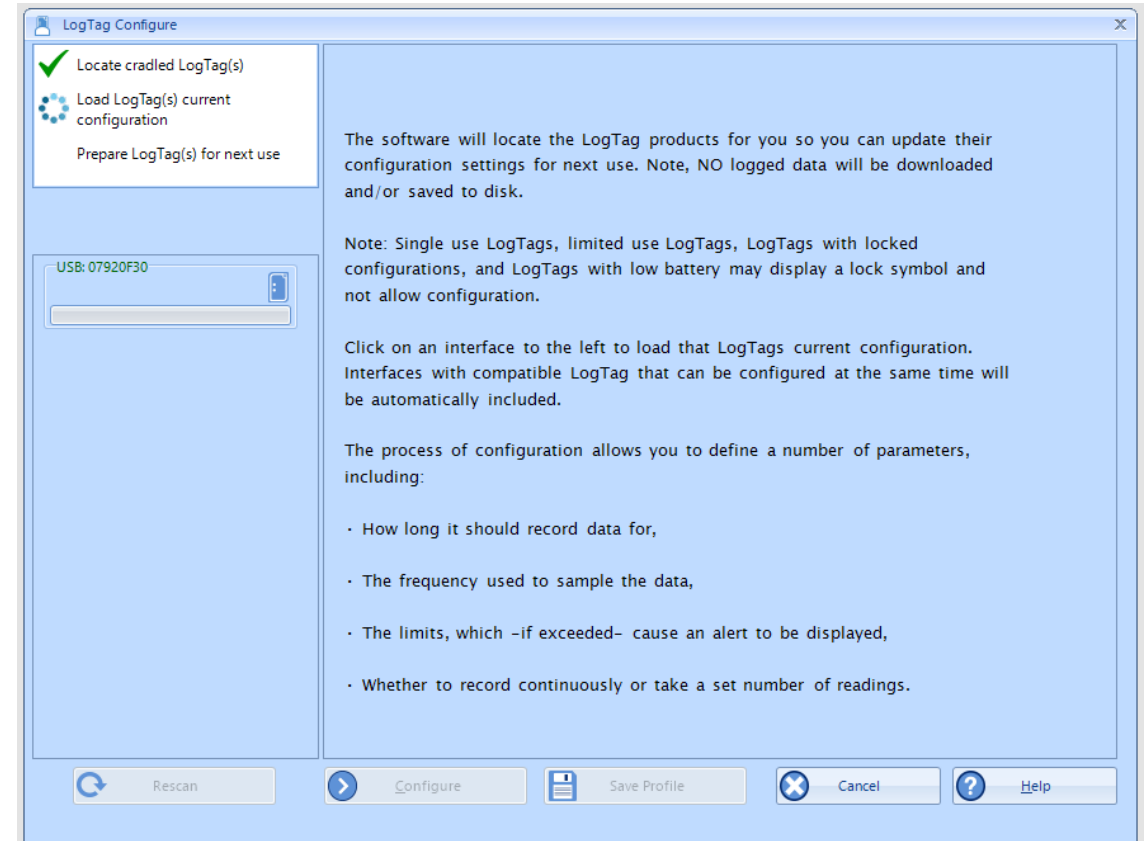
Take the configured refrigerator logger out of the cradle and label the back of the logger "Refrigerator". If you have more than one refrigerator unit, also include the unit number.

Next, insert the LogTag that you will use in your freezer into the docking station.

LogTag Configure: Freezer Logger



1. Select “LogTag” and “Configure”



2. Wait while the computer program locates the LogTag

LogTag Configure: Freezer Logger

3. Enter your **VFC PIN #**, **clinic name**, and **Freezer** in the “User Information” field. (If you have more than one refrigerator, label them 1 and 2 or A and B)

4a. Enter **15 minutes** in the “Record a reading every” field. “Readings recorded” will automatically change to span at least 165 days.

4b. Make sure **0 minutes** is in the space after “Begin recording after delay of”

Configure LogTag(s) TRID/TRED & VFC400-1/2/3 Settings from SN:7862900752

User Information
Description: C05000 WSCDC Freezer LogTag Battery: OK
Password: Configure requires a password
 Download requires a password

Logging Parameters
Push button start Enable pre-start logging

Record readings continuously, overwrite oldest when memory full
 Record readings go that

Readings recorded will span at least 165 Days
Number of readings to record 15905 maximum is 15905
Record a reading every 15 Minutes
Begin recording after a delay of 0 Minutes

Audible Alarm (if available) Logger display temperature unit: Fahrenheit

Upper Alarm
 Trigger alarm when readings above/equal 5.0 °F
After 4 Consecutive violation readings (1 Hour)

Lower Alarm
 Trigger alarm when readings below/equal -40 °F
After 2 Accumulative violation readings (None)

Alarm Settings Advanced Settings Additional Features

Configure Save Profile Cancel Help

Retain Description/Password

“Readings recorded” will automatically change to span at least 165 days.
**Note: This number is for the VFC400 DDLs (red DDLs).

LogTag Configure: Freezer Logger

LogTag Configure

Configure LogTag(s) TRID/TRED & VFC400-1 /2/3 Settings from SN:7862900752

✓ Locate cradled LogTag(s)
✓ Load LogTag(s) current configuration
Prepare LogTag(s) for next use

Click on LogTag below to select model(s)
s current

User Information
Description: C05000 WSCDC Freezer **LogTag Battery: OK**
Password: Configure requires a password
 Download requires a password

Logging Parameters
Push button start Enable pre-start logging

Record readings continuously, overwrite oldest when memory full
 Record readings so that:
Readings recorded will span at least 165 Days
Number of readings to record 15905 maximum is 15905
Record a reading every 15 Minutes
Begin recording after a delay of 0 Minutes

Audible Alarm (if available) Logger display temperature unit: Fahrenheit

Upper Alarm
 Trigger alarm when readings above/equal 5.0 °F
After 4 Consecutive violation readings (1 Hour)

Lower Alarm
 Trigger alarm when readings below/equal -40 °F
After 2 Accumulative violation readings (None)

Alarm Settings Advanced Settings Additional Features

Rescan Configure Save Profile Cancel Help

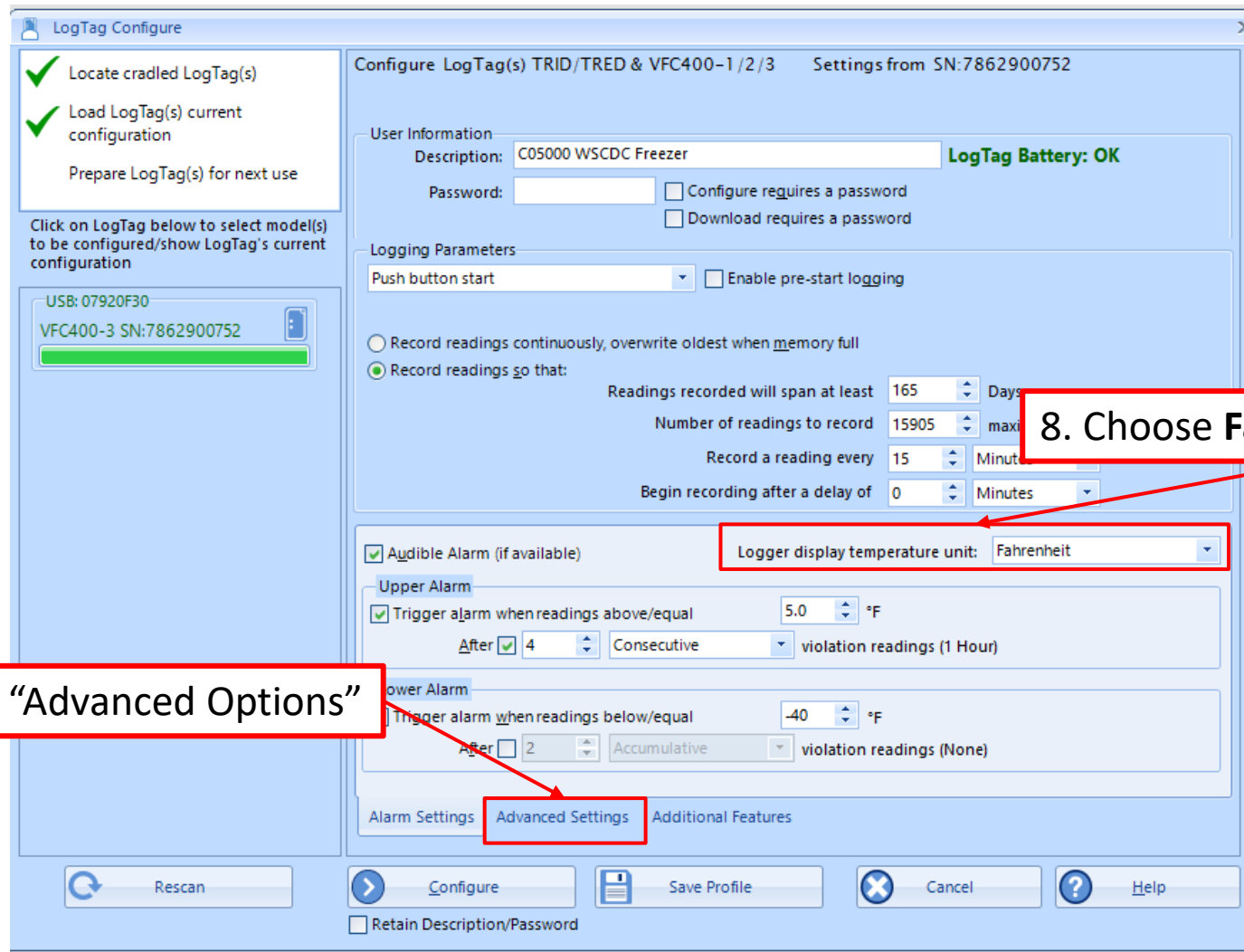
Retain Description/Password

5. Check “Trigger alarm when readings above/equal” and enter 5 if you record in Fahrenheit or -15 if you record in Celsius.

6. Check “After” and enter “4 consecutive”

7. Check “Trigger alarm when readings below/equal” and enter -40 if you record in Fahrenheit or Celsius. Leave the “after” box unchecked.

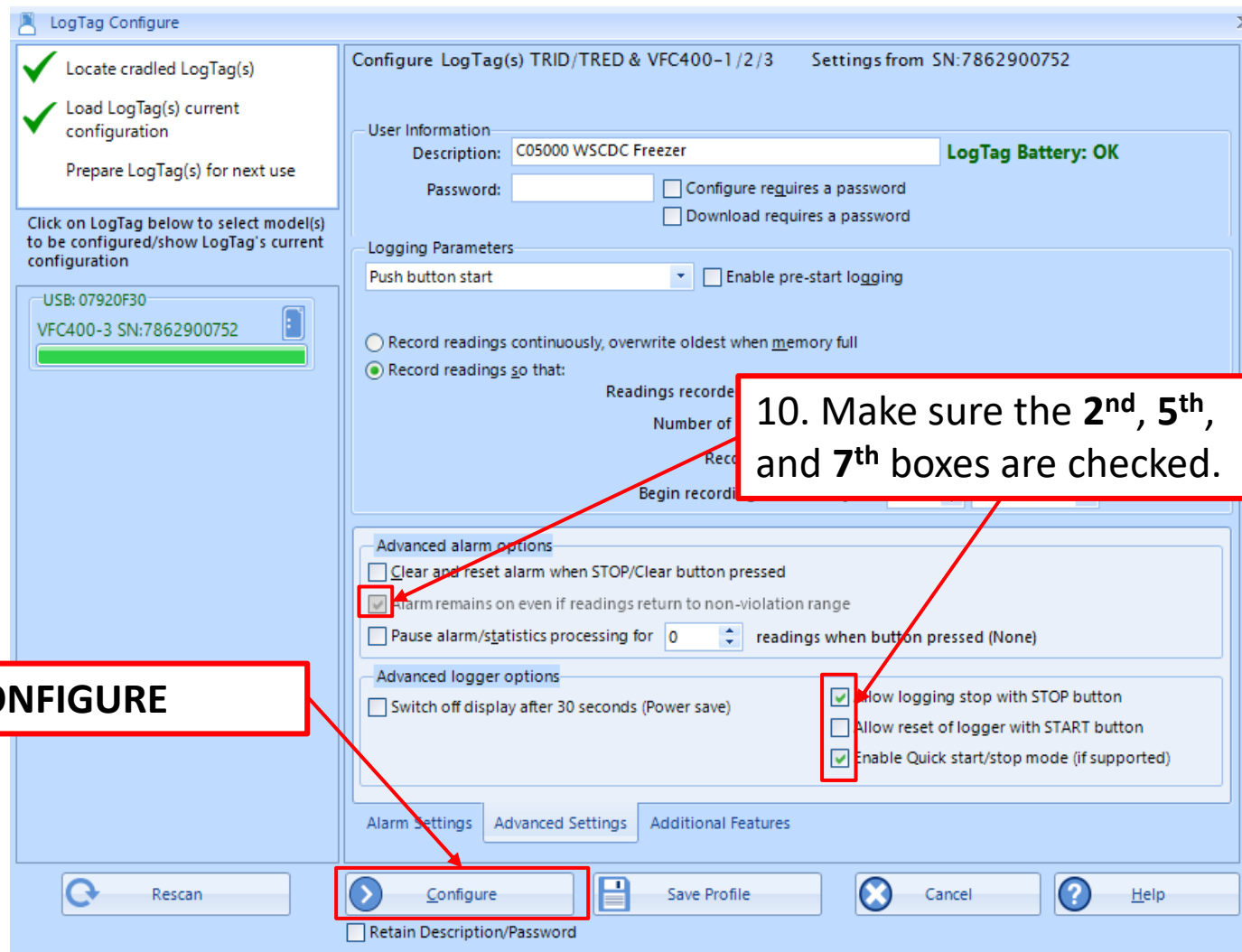
LogTag Configure: Freezer Logger



8. Choose Fahrenheit or Celsius

9. Click "Advanced Options"

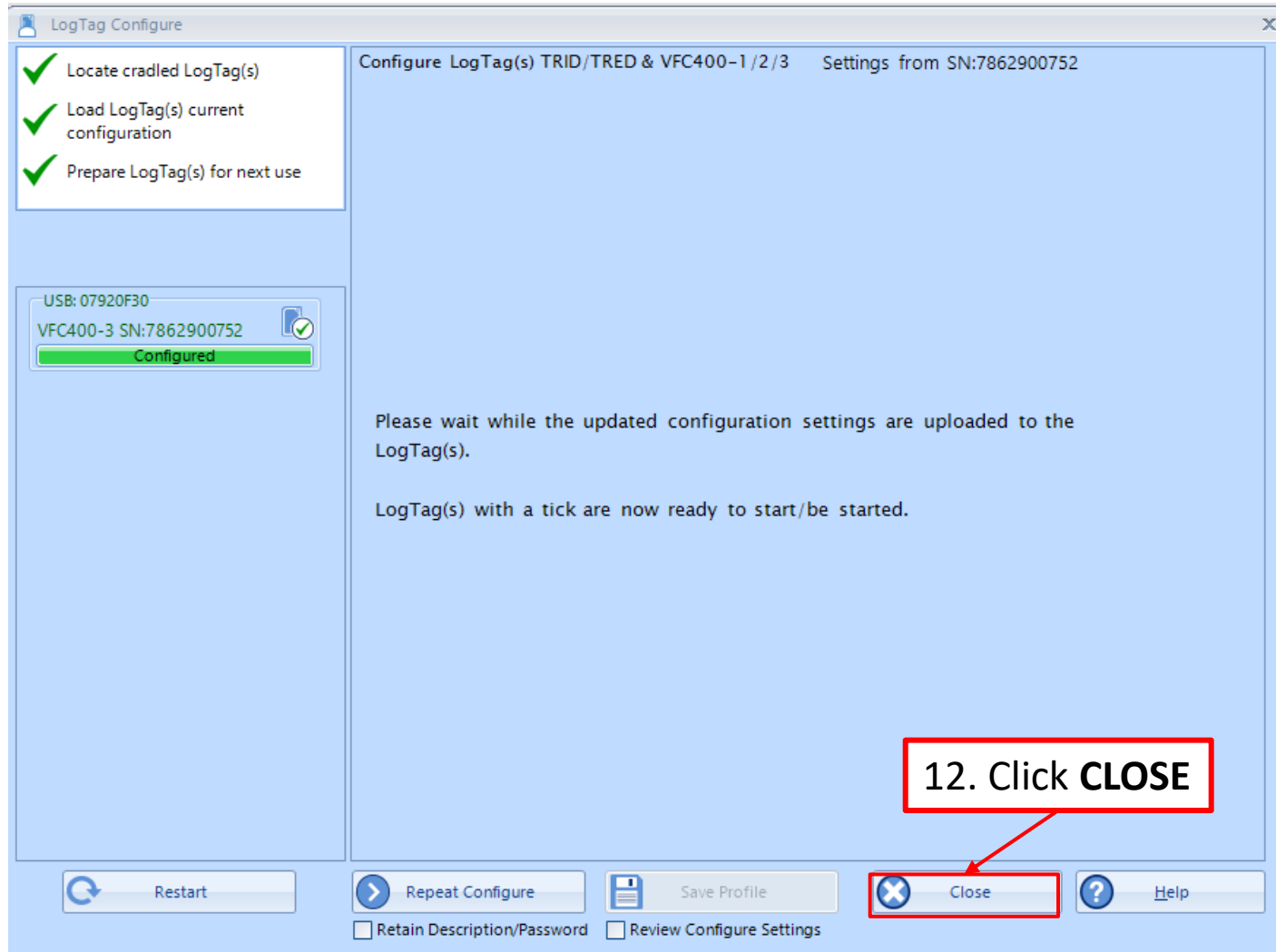
LogTag Configure: Freezer Logger



11. Click **CONFIGURE**

10. Make sure the **2nd**, **5th**, and **7th** boxes are checked.

LogTag Configure: Freezer Logger



Congratulations!

You are done configuring your refrigerator logger.

Important: Label your loggers!

Take the configured refrigerator logger out of the cradle and label the back of the logger "Refrigerator". If you have more than one refrigerator unit, also include the unit number.

Next, insert the LogTag that you will use in your freezer into the docking station.