



**COVID-19 Question and Answer Session
for Long-Term Care and Congregate Residential Settings**

March 26th, 2021

Housekeeping

- All attendees in listen-only mode
- Submit questions via Q&A pod to **All Panelists**
- Slides and recording will be made available later

Agenda

- Upcoming Webinars
- Visitation
- Travel
- Vaccination Status
- Open Q & A

Slides and recording will be made available after the session.

IDPH webinars

Upcoming Friday Brief Updates and Open Q&A 1:00 pm - 2:00 pm

Friday, April 2 nd	https://illinois.webex.com/illinois/onstage/g.php?MTID=e71277e40c96cd8f670532b498caec090
Friday, April 9 th	https://illinois.webex.com/illinois/onstage/g.php?MTID=e37660c864230c9389529ef80a6473da9
Friday, April 16 th	https://illinois.webex.com/illinois/onstage/g.php?MTID=e21bf57148b2e54b8503d19f041f69b86
Friday, April 23 rd	https://illinois.webex.com/illinois/onstage/g.php?MTID=e92da89304d1eb8a0740a36df136f9090
Friday, April 30 th	https://illinois.webex.com/illinois/onstage/g.php?MTID=e1bf2836762aec7cdcbe160ca9439896f

Previously recorded webinars can be viewed on the [IDPH Portal](#)

Slides and recordings will be made available after the sessions.

CORE PRINCIPLES OF INFECTION PREVENTION

Screening

Hand Hygiene

Face Covering/Mask

Physical Distancing of 6-feet

Education

Cleaning and Disinfection

Proper Use of PPE

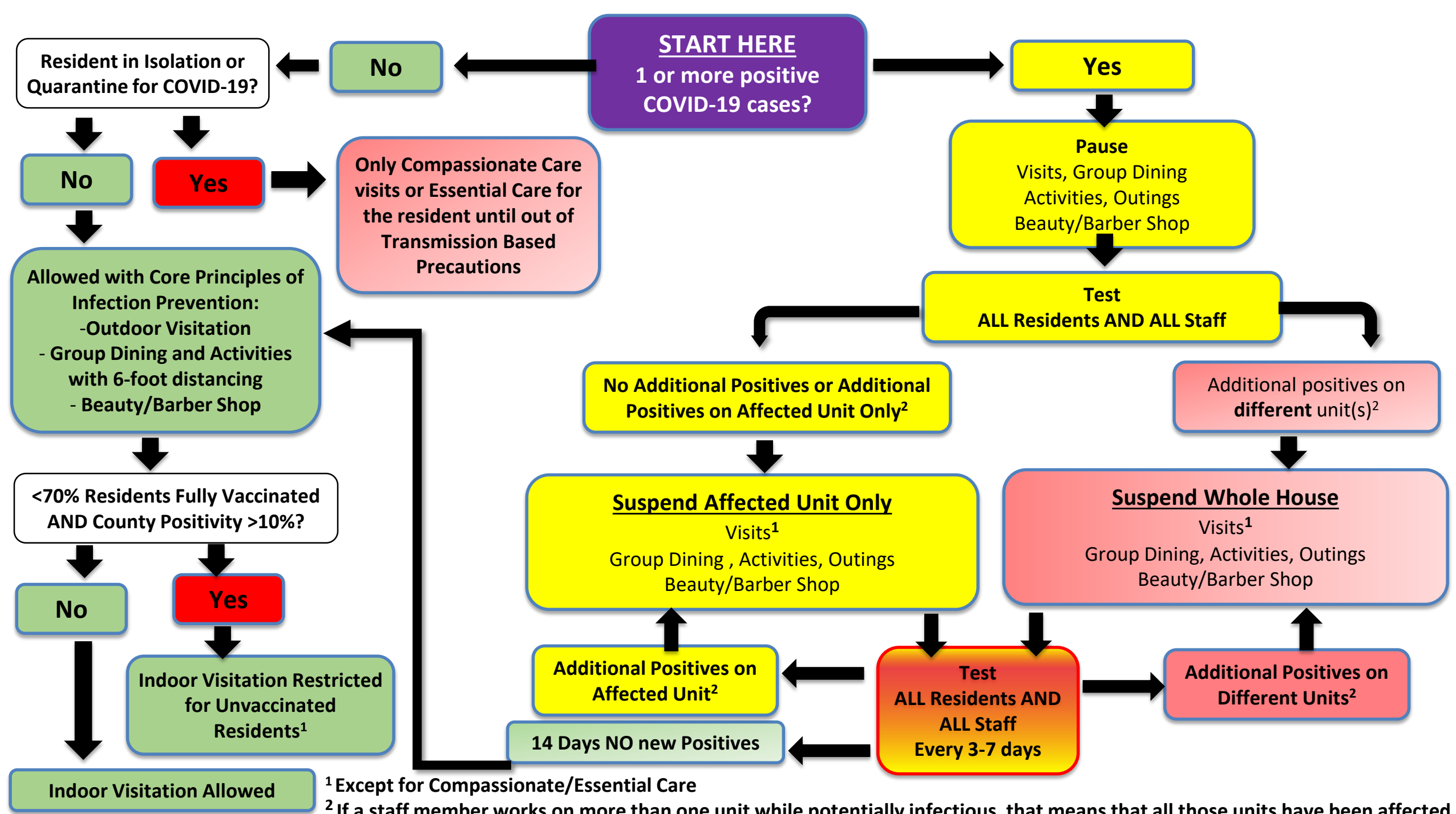
Cohorting

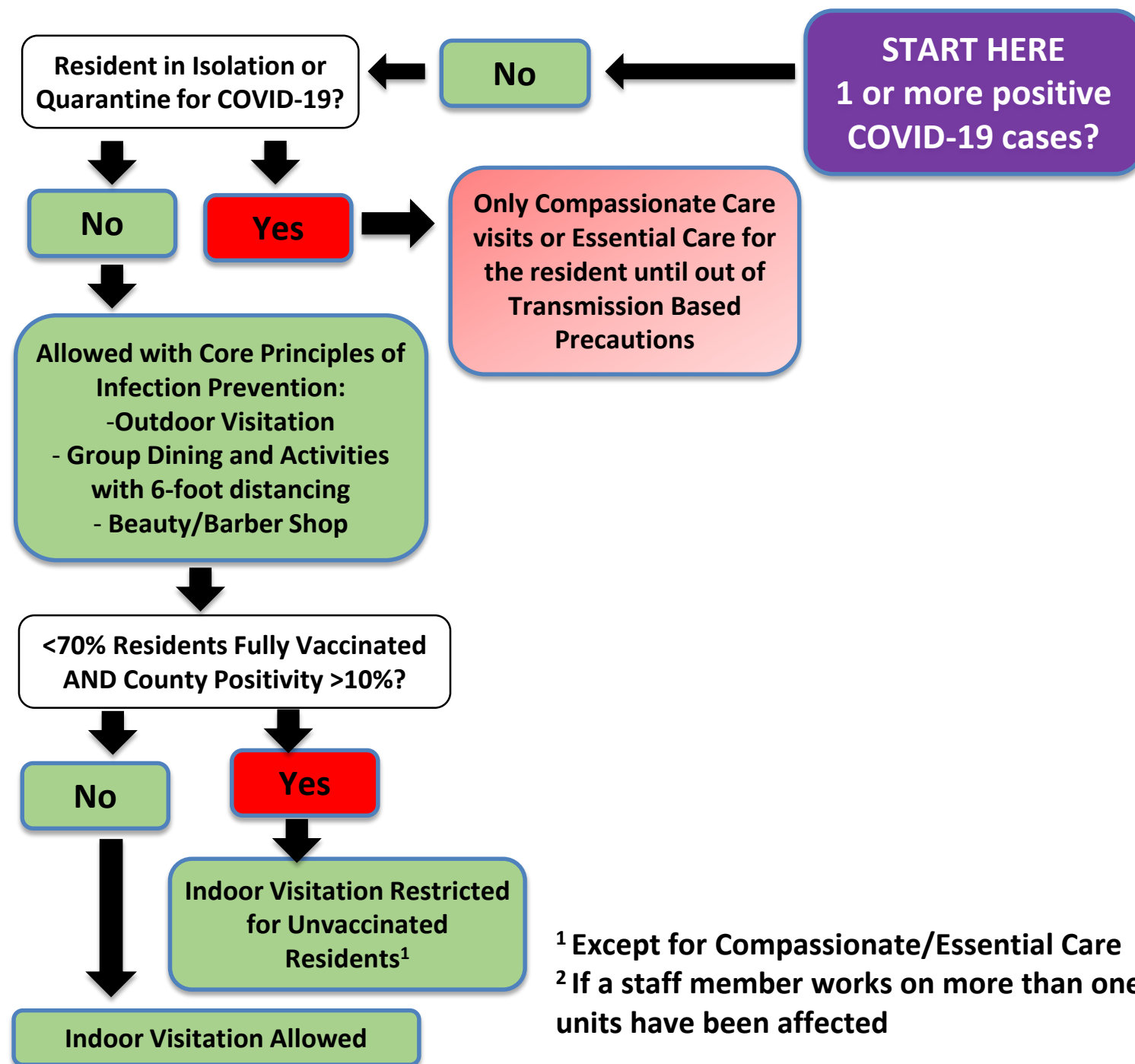
Testing

Outdoor Visits Preferred

HIGHER RISK EXPOSURE

- **To a person with confirmed COVID-19**
- **Longer than 15 minutes in 24 hours**
- **Closer than 6 feet**
- **No masks or appropriate PPE**

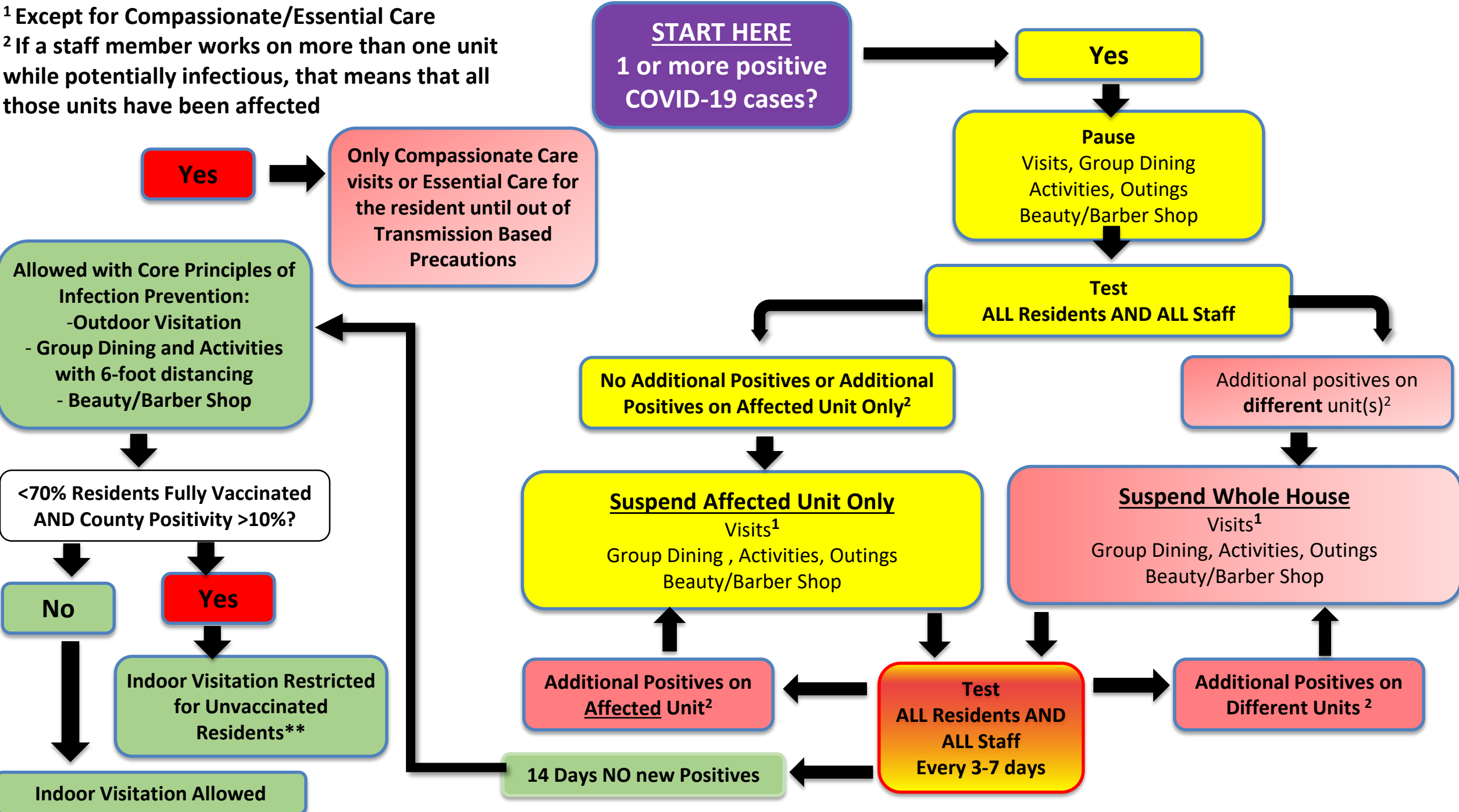


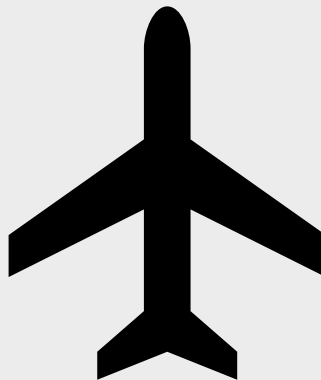


¹ Except for Compassionate/Essential Care

² If a staff member works on more than one unit while potentially infectious, that means that all those units have been affected

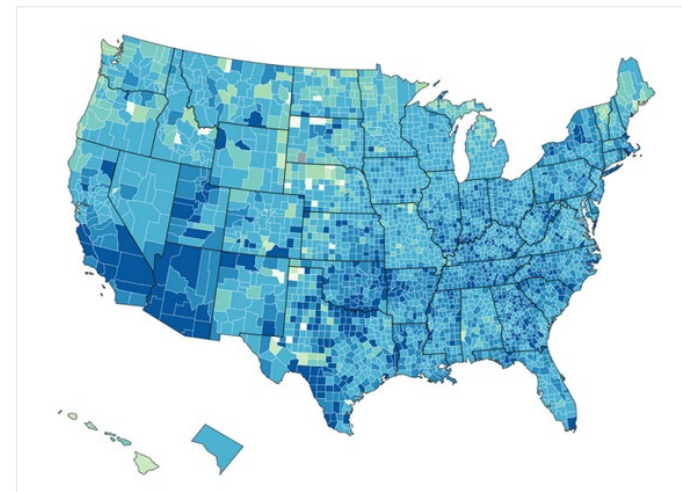
¹ Except for Compassionate/Essential Care
² If a staff member works on more than one unit while potentially infectious, that means that all those units have been affected



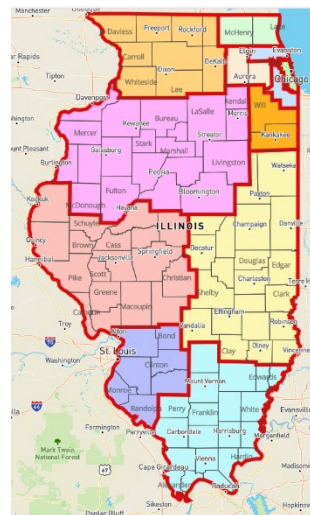


County View

Track cases, deaths, hospitalizations, and more for your community



Travel



Current Out of State Travel Guidance

Healthcare Personnel (HCP)

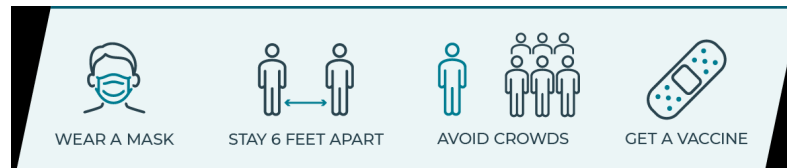
- Follow Core Principles of Infection Prevention
- Encourage vaccination
- Avoid Unnecessary Travel
- Wear appropriate PPE
- Maintaining appropriate staffing in healthcare facilities is essential to providing a safe work environment for healthcare personnel (HCP) and safe patient care
- Continue to follow CDC travel recommendations and requirements, including restriction from work, when recommended for any traveler

Residents

- Follow Core Principles of Infection Prevention
- Encourage vaccination
- Avoid Unnecessary Travel
- Continue to follow CDC travel recommendations and requirements
- Quarantine

Visitors

- Follow Core Principles of Infection Prevention
- Visitors should be counseled about their potential to be exposed to SARS-CoV-2 in the facility
- Test per travel guidance/requirements
- **Domestic travel:** Allow visit with screening and testing (if applicable)
 - Follow travel testing requirements
 - Prioritize outdoor visitation
 - Compassionate care always allowed
- **International Travel:** All air passengers coming to the United States, including U.S. citizens, are
 - **Required** to have a negative COVID-19 test result or documentation of recovery from COVID-19 before they board a flight
 - Get tested 3-5 days after travel AND stay home and self-quarantine for 7 days after travel.



<https://www.cdc.gov/coronavirus/2019-ncov/travelers/travel-during-covid19.html>

<https://www.cdc.gov/coronavirus/2019-ncov/hcp/mitigating-staff-shortages.html>

Vaccination Status

Fully Vaccinated Staff

- Getting further clarification from CDC
- Fully vaccinated asymptomatic HCP with higher-risk exposures
 - Do not need to be restricted from work for 14 days following their exposure.
 - Still consider work restrictions for HCP with underlying immunocompromising conditions
- Consider work restrictions for HCP who have traveled
 - continue to follow CDC travel recommendations and requirements
 - Considerations for Essential Workers still apply

Fully Vaccinated Residents

- Allowed indoor visitors **even** if fewer than 70% of residents vaccinated AND county positivity rate is over 10%
- Still **need to quarantine** if higher risk exposure

Unvaccinated or Partially Vaccinated Residents

- **Limit** visits to compassionate care situations if the COVID-19 county positivity rate is >10% and <70% of residents in the facility are fully vaccinated.
- Need to quarantine if higher risk exposure
- Quarantine new admissions or readmissions (including overnight outings) for full 14 days

<https://www.cdc.gov/coronavirus/2019-ncov/hcp/infection-control-after-vaccination.html>

<https://www.cdc.gov/coronavirus/2019-ncov/hcp/mitigating-staff-shortages.html>

Open Q&A

Submit questions via Q&A pod to **All Panelists**

Please do not resubmit a single question multiple times

Slides and recording will be made available after the session.

Reminders

- SIREN Registration
 - To receive situational awareness from IDPH, please use this link to guide you to the correct registration instructions for your public health related classification: <http://www.dph.illinois.gov/siren>
- Project Firstline Learning Needs Assessment
 - English Version: <https://redcap.link/firstlineLNA>
 - Spanish Version: <https://redcap.link/LNAespanol>
- NHSN Assistance:
 - Contact Telligen: **nursinghome@telligen.com**