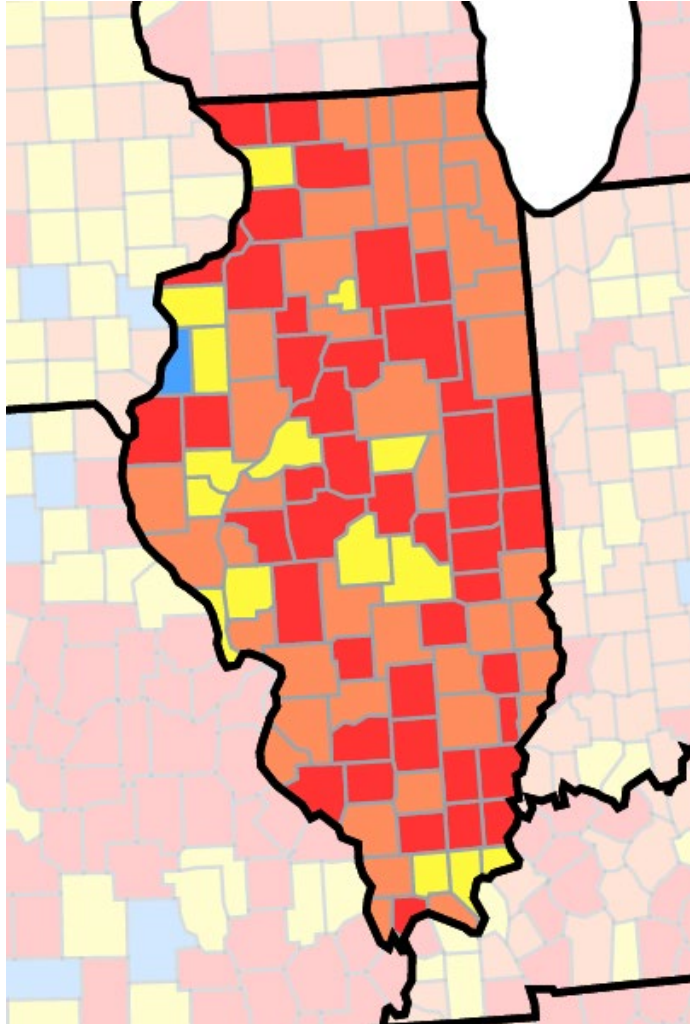


A background image of a lit sparkler with bright orange and yellow sparks against a dark blue background. The sparks are scattered across the frame, with some appearing as long, thin streaks and others as small, bright bursts.

IDPH LTC Q & A COVID-19 Update

Catherine A. Counard, MD, MPH
State Medical Officer/ODC
03/09/23

CDC Community Transmission



- Many counties remain in substantial or high transmission
- Still have increased risk of COVID-19 being introduced to LTC facilities.
- Remain vigilant for new cases, can spread quickly in facilities if masks are no longer required in communal areas when community transmission is not high
- COVID-19 vaccines and treatments remain the strongest lines of defense from severe illness, hospitalization, and death.

https://covid.cdc.gov/covid-data-tracker/#county-view?list_select_state=Missouri&data-type=Risk

● High ● Substantial ● Moderate ● Low

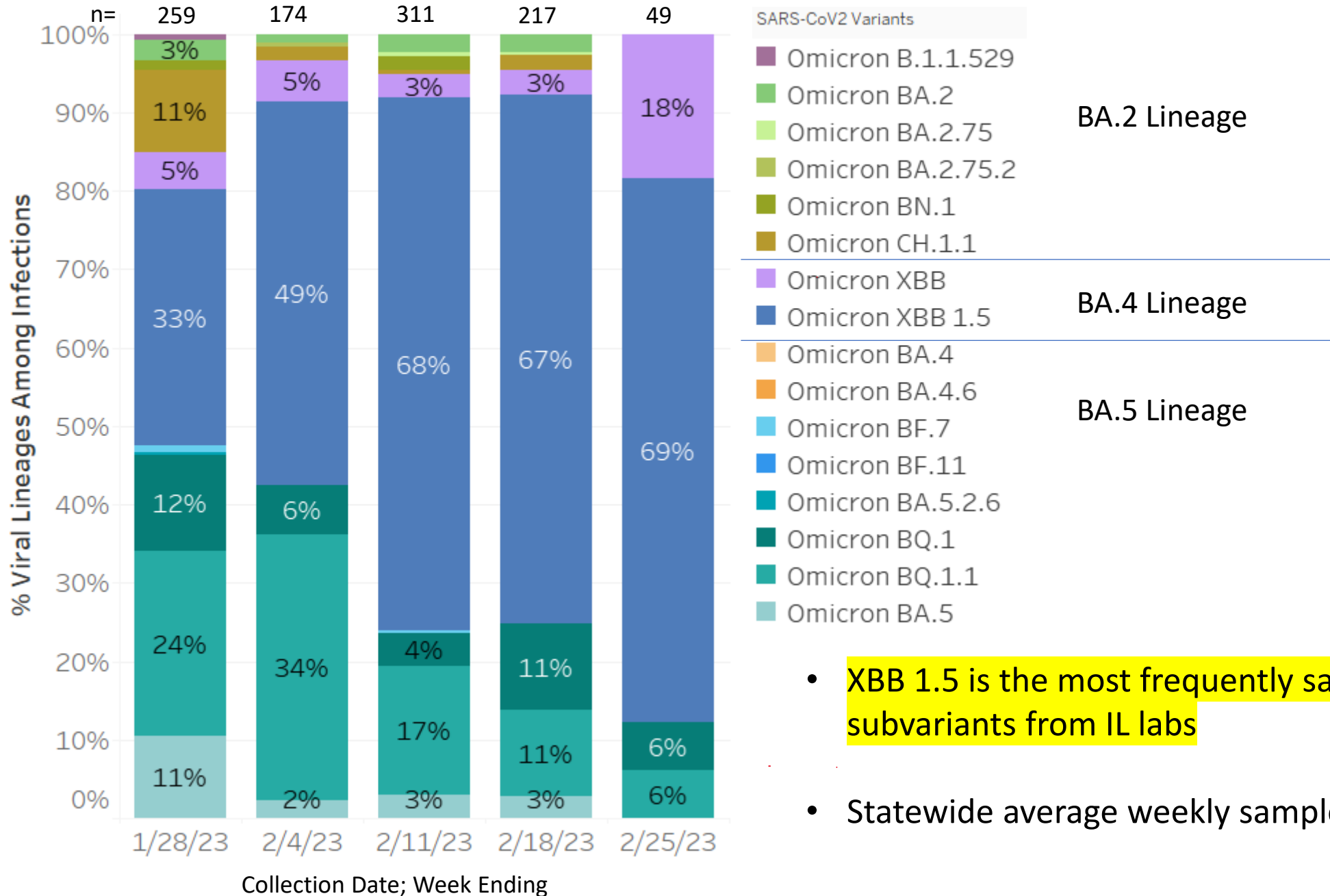
SARS-CoV-2 Variants

- **No matter the variant, a surge in cases can impact healthcare resources.**

Even if an infection caused by a particular variant is less likely to cause severe disease compared to other variants, an increase in the total number of cases could cause an increase in hospitalizations, put more strain on healthcare resources, and potentially lead to more deaths.

<https://www.cdc.gov/coronavirus/2019-ncov/variants/index.html>

SARS-CoV2 Variants Sampled by IDPH/SHIELD



- XBB 1.5 is the most frequently sampled Omicron subvariants from IL labs
- Statewide average weekly sample (1/22 – 2/25)= 202

Omicron XBB.1.5 Information

- The XBB.1.5 Omicron variant has a mutation that is believed to help the virus bind to cells, becoming more transmissible.
- To date, no difference in the proportion of patients hospitalized or those who died has been observed, suggesting no significant difference in disease severity from earlier Omicron variants.
- Someone who has been infected with an earlier omicron variant is likely susceptible to reinfection with XBB.1.5.

Epidemiologic Characteristics of SARS-CoV-2 Recombinant Variant XBB.1.5 — New York City, November 1, 2022–January 4, 2023
MMWR: February 24, 2023 / 72(8);212–214 <https://www.cdc.gov/mmwr/volumes/72/wr/mm7208a4.htm>

CDC COVID-19 Vaccination Studies in LTC Residents

- Being up to date on COVID-19 vaccines continues to provide strong protection against severe disease, hospitalization, and death in adults, including during Omicron variant predominance.
- [CDC Morbidity and Mortality Weekly Report](#) (MMWR) (Jan. 27, 2023) SARS-CoV-2 antibody responses to the ancestral SARS-CoV-2 strain and Omicron BA.1 and BA.4/BA.5 variants in Ohio and Rhode Island nursing home residents after receipt of the bivalent COVID-19 vaccine from September to November 2022.
- Among nursing home residents in the two states, SARS-CoV-2 antibody levels waned within months after vaccination, irrespective of previous SARS-CoV-2 infection, after monovalent booster vaccination. **Antibody response broadened after the COVID-19 bivalent booster for vaccinated nursing home residents among those with and without previous infection.**
- [MMWR](#) (Jan. 27, 2023) Laboratory-confirmed COVID-19 case incidence rates among U.S. nursing home residents by up-to-date vaccination status from Oct. 10, 2022 to Jan. 8, 2023.
- **Nursing home residents who were not up to date with recommended COVID-19 vaccines had a 30 to 50 percent higher risk for acquiring SARS-CoV-2 infection compared with residents who were up to date with COVID-19 vaccines.**

Overall

Age Group

Rates of COVID-19 Deaths by Vaccination Status in Ages 18 and Older

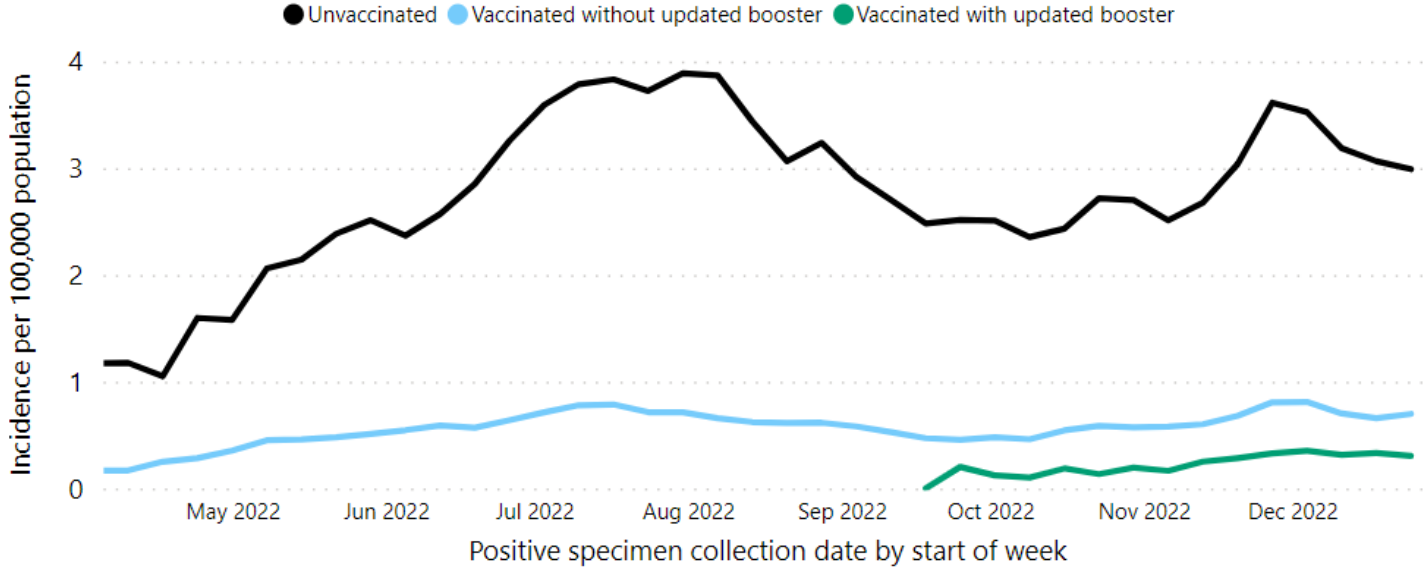
April 03, 2022–December 31, 2022 (24 U.S. jurisdictions)

Select Outcome

- Deaths
- Cases

Date

4/3/2022 12/25/2022



In December 2022, people ages 18 years and older and vaccinated with an updated (bivalent) booster had:

9.8X
lower risk of dying from COVID-19

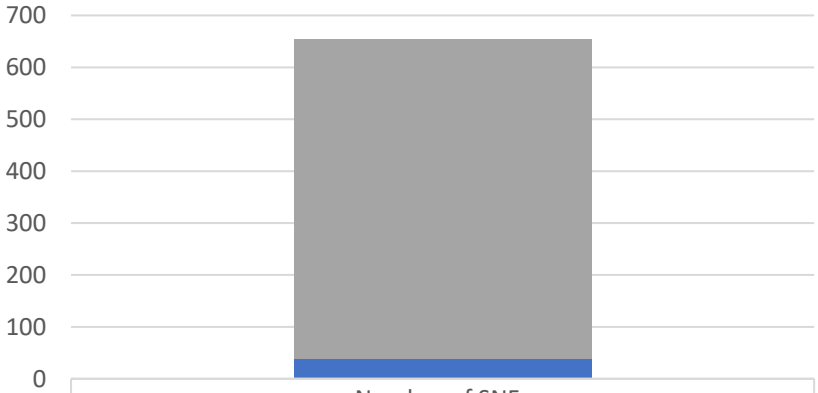
compared to unvaccinated people, and

2.4X
lower risk of dying from COVID-19

compared to people vaccinated without the updated (bivalent) booster.

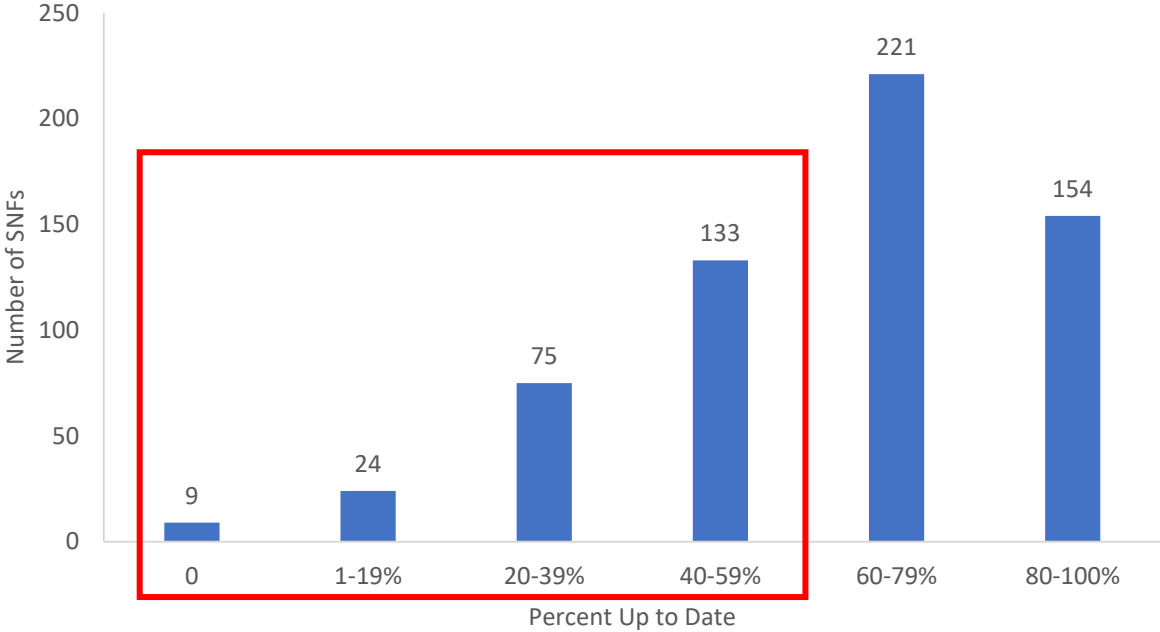
NHSN SNF Resident COVID-19 Vaccination Data (02/28/23 – 03/05/23)

Residents at Skilled Nursing Facilities who Have Received a Booster/Additional Dose



Category	Number of SNFs
At Least 1 Resident has Received a Booster/Additional Dose	616
0 Residents have Received a Booster/Additional Dose	0
Not Yet Reported	39

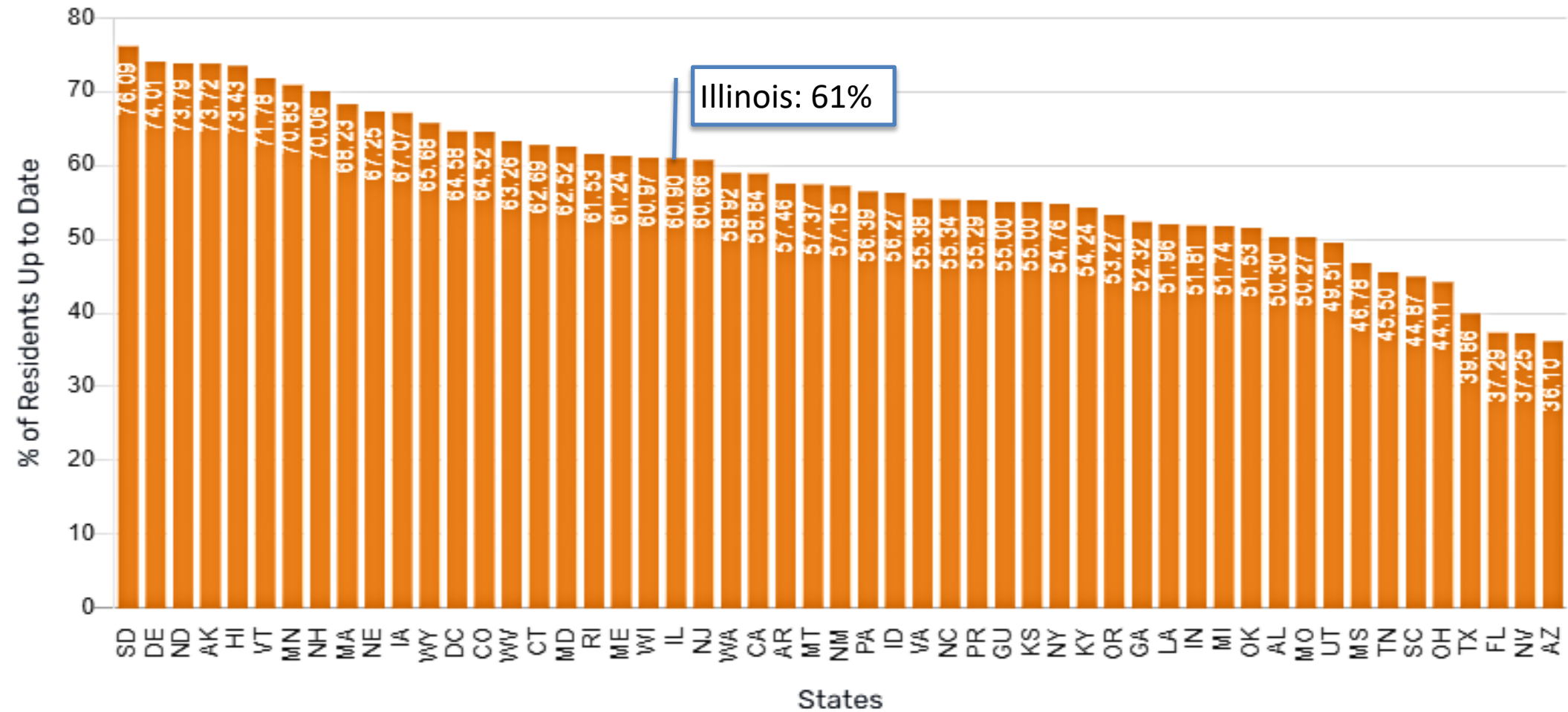
Percent of Residents who are Up to Date (N=616)



- 241 SNFs (39%) reporting fewer than 60 % of residents are up to date

Percentage of Current Residents Up to Date with COVID-19 Vaccines per Facility

This shows the average percentage among facilities who have reported vaccination data in the current or prior week.



<https://data.cms.gov/covid-19/covid-19-nursing-home-data>

Therapeutics

- Therapeutics (Paxlovid, Lagevrio, and Veklury) remain effective against the currently circulating strains of SARS-CoV-2.

<https://www.cdc.gov/coronavirus/2019-ncov/hcp/clinical-care/outpatient-treatment-overview.html>

- Utilization remains low in Illinois LTC facilities.

HHS Side-by-Side Comparison of COVID-19 Therapeutics Feb 2023

PRODUCT	IV ANTIVIRALS	ORAL ANTIVIRALS	
	Treatment	Treatment	
	Veklury (remdesivir)	Paxlovid (nirmatrelvir co-packaged with ritonavir)	Lagevrio (molnupiravir)
Manufacturer	Gilead Sciences, Inc.	Pfizer, Inc.	Merck Sharp & Dohme Corp., a subsidiary of Merck & Co., Inc.
Product Websites	Veklury website	Paxlovid website	Lagevrio website
Package Insert	Veklury Prescribing Information	N/A	N/A
Fact Sheets for Healthcare Providers	N/A	Paxlovid Healthcare Provider Fact Sheet	Lagevrio Healthcare Provider Fact Sheet
Fact Sheets for Patients, Parents, and Caregivers (English)	Veklury Patient Information (English)	Paxlovid Patient Fact Sheet (English)	Lagevrio Patient Fact Sheet (English)
Fact Sheets for Patients, Parents, and Caregivers (Spanish)	Not Available	Paxlovid Patient Fact Sheet (Spanish)	Lagevrio Patient Fact Sheet (Spanish)
Mechanism of Action	Nucleotide analog ribonucleic acid (RNA) polymerase inhibitor that halts viral replication	Viral protease inhibitor that halts viral replication	Nucleoside analog that inhibits viral replication by viral mutagenesis
Treatment Efficacy per Clinical Trials ²	87% reduction in hospitalizations/deaths 87%	88% reduction in hospitalizations/deaths 88%	30% reduction in hospitalizations/deaths 30%
Activity Against SARS-CoV- 2 Variants ³	See Section 12.4 of Veklury Prescribing Information	See Section 12.4 of Paxlovid Healthcare Provider Fact Sheet	See Section 12.4 of Lagevrio Healthcare Provider Fact Sheet
Authorized or Approved Use(s)	Approved for Treatment of mild to moderate COVID-19	Authorized for Treatment of mild to moderate COVID-19	Authorized for Treatment of mild to moderate COVID-19

Illinois SNFs Reporting Therapeutic Use and COVID-19 Cases (NHSN data)

Week Ending	# of SNF Use (MOLNUP)	# of SNF Use (PAXL)	Total SNF Reporting Use	Total SNF Reporting Cases	% SNF with Cases Providing Therapeutics
02/12/2023	14	31	39	111	35%
02/19/2023	10	30	34	122	28%
02/26/2023	16	27	30	125	24%
03/05/2023	18	30	35	124	28%

Illinois SNF COVID-19 Resident Cases Receiving Therapeutics (NHSN Data)

Facility Type	Week Ending	MOLNUP	MOLNUP Use/ Cases(%)	PAXL	PAXL Use/ Cases(%)	Therapeutic Use	Total Resident Cases	Total Therapeutic/ Cases(%)
LTC-SKILLNURS	02/12/2023	77	16%	87	18%	164	473	35%
LTC-SKILLNURS	02/19/2023	39	6%	114	19%	153	601	25%
LTC-SKILLNURS	02/26/2023	30	5%	129	20%	159	661	24%
LTC-SKILLNURS	03/05/2023	51	7%	102	15%	153	694	22%

COVID-19 TEST TO TREAT CLINIC

If you've tested positive for COVID-19 or have COVID-like symptoms, contact SIU Medicine.

If you have COVID-19 and are at a high risk of getting very sick, an oral treatment may help you recover. If needed, SIU Medicine can prescribe that medication and put you on the road to recovery.

Schedule a telehealth appointment:

Call 217.545.5100

Monday – Friday, 7AM - 8PM

Saturday and Sunday, 10AM - 5PM

The **Test to Treat** program can provide faster, easier access to lifesaving COVID-19 treatments at no cost to you*.

Learn more, scan the QR code or visit siumed.org/treatment/covid-19-test-treat-clinic



*Patient insurance may be billed.



Illinois COVID-19 Test to Treat Telehealth Program

- *Free and Easier Access to Treatment
- IDPH and SIU are partnering to offer a **Test to Treat telehealth** program to provide faster, easier access to lifesaving COVID-19 treatments.
- Individuals who are sick and/or have COVID-19 symptoms can meet with a healthcare provider (virtually through telehealth), and if eligible, get a prescription for an oral antiviral treatment. This service is available to everyone.
- Could be useful for residents of ALFs and other non-skilled facilities where it may be difficult to contact their provider or obtain a prescription for treatment.
- *Patient insurance may be billed for those who are insured.





Long-Term Care STATeam



IDPH and Prism are proud to announce a new health-equity informed program: the Support, Treatment, and Access Team (STATeam) delivering a comprehensive suite of COVID-19 and Flu outbreak management services to Long Term Care (LTC) Facilities across Illinois.

Every minute counts during an outbreak - reach out to us for critical support.

SERVICES OFFERED



TESTING
Collection of nasal and saliva multiplex (COVID-19 & Flu) PCR testing with next-day results.



VACCINES
Administration of COVID-19 and Flu vaccinations.



TREATMENTS
Prescription and administration of COVID-19 (Paxlovid, Lagevrio, etc.) and Flu therapeutics.



CONSULTATION
Meet HHS and IDPH LTC compliance requirements.



+1 (888) 977-4086



LTCSTAT@prism.org



<http://prism.org/LTCSTAT>

Spanish version is also available

Reminder PRISM Health STATeam

Available to all licensed facility types* for:

- Onsite PCR testing with next day results
 - Onsite influenza and COVID-19 vaccination clinics
 - Treatment for influenza and COVID-19
 - Consultation
-
- Outside of Chicago, CDPH has separate program with CIMPAR

